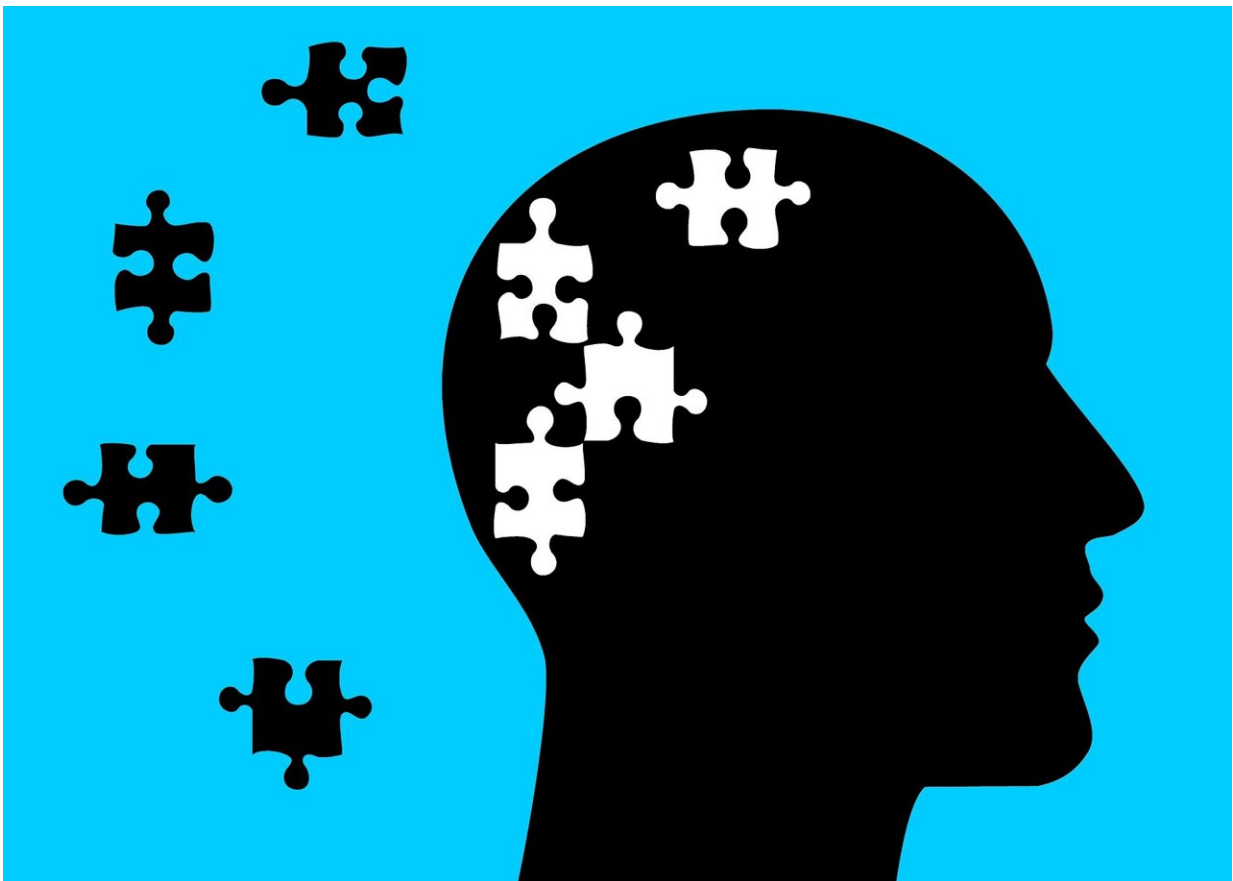


# Alzheimer's disease affects most known biological pathways in the brain, researchers find

June 24 2022, by Chloe Meck

---



Credit: Pixabay/CC0 Public Domain

Nearly 6 million older adults have Alzheimer's disease in the United

States, a number expected to double by 2050. Already the sixth leading cause of death, Alzheimer's disease is a complex neurodegenerative disease that causes memory loss, confusion, poor judgment, depression, delusions and agitation that robs people of their ability to live independently. Currently, the biological mechanisms underlying Alzheimer's disease are poorly understood; as a result, there are few effective treatments and no cure for the disease.

In a recent study, a research team led by scientists at Beth Israel Deaconess Medical Center (BIDMC) conducted a systematic assessment of more than 200,000 scientific publications to understand the breadth and diversity of biological pathways—key molecular chain reactions that drive changes in cells—that contribute to Alzheimer's disease by research over the last 30 years. The team found that, while nearly all known pathways have been linked to the disease, the most frequently associated [biological mechanisms](#)—including those related to the [immune system](#), metabolism and long-term depression—have not significantly changed in 30 years, despite major technological advances. The scientists' work, published in *Frontiers in Aging Neuroscience*, will advance research into the mechanisms of neurodegeneration.

"The burden of Alzheimer's disease is steadily increasing, driving us towards a neurological epidemic," said Winston A. Hide, Ph.D., director of the Precision RNA medicine Core Facility at BIDMC and an associate professor of medicine at Harvard Medical School. "Our findings suggest that not only is this disorder incredibly complex, but that its pathology includes most known biological pathways. This means that the disease's effects are far broader in the body than we realized."

The team performed an exhaustive text search of 206,324 pathway-specific dementia publication abstracts published since 1990. Next, they looked at 341 known biological pathways and determined how many publications linked a given [pathway](#) to the disease. The researchers

found that 91 percent of pathways—all but seven—were linked to Alzheimer's disease. Nearly half of the pathways were linked to Alzheimer's disease in more than 100 scientific papers.

They also found that the top-ranked 30 pathways most frequently referred to in literature remained relatively consistent over the last 30 years suggesting that most studies of the disease have focused on a small subset of all the known disease-associated pathways.

"Clinical trials aiming to either delay the onset or slow the progression of Alzheimer's disease have largely failed," said study first author Sarah Morgan, a postdoctoral researcher at BIDMC during the extent of this research and now a lecturer at Queen Mary University of London. "Given that an unexpected diversity of pathways is associated with Alzheimer's disease, a wide range of disease processes are not being successfully targeted in [clinical trials](#). We hypothesize that comprehensively targeting more of the associated underlying mechanisms in Alzheimer's disease will increase the chances of success in future drug trials."

**More information:** Sarah L. Morgan et al, Most Pathways Can Be Related to the Pathogenesis of Alzheimer's Disease, *Frontiers in Aging Neuroscience* (2022). [DOI: 10.3389/fnagi.2022.846902](https://doi.org/10.3389/fnagi.2022.846902)

Provided by Beth Israel Deaconess Medical Center

Citation: Alzheimer's disease affects most known biological pathways in the brain, researchers find (2022, June 24) retrieved 23 April 2024 from <https://medicalxpress.com/news/2022-06-alzheimer-disease-affects-biological-pathways.html>

This document is subject to copyright. Apart from any fair dealing for the purpose of private

study or research, no part may be reproduced without the written permission. The content is provided for information purposes only.