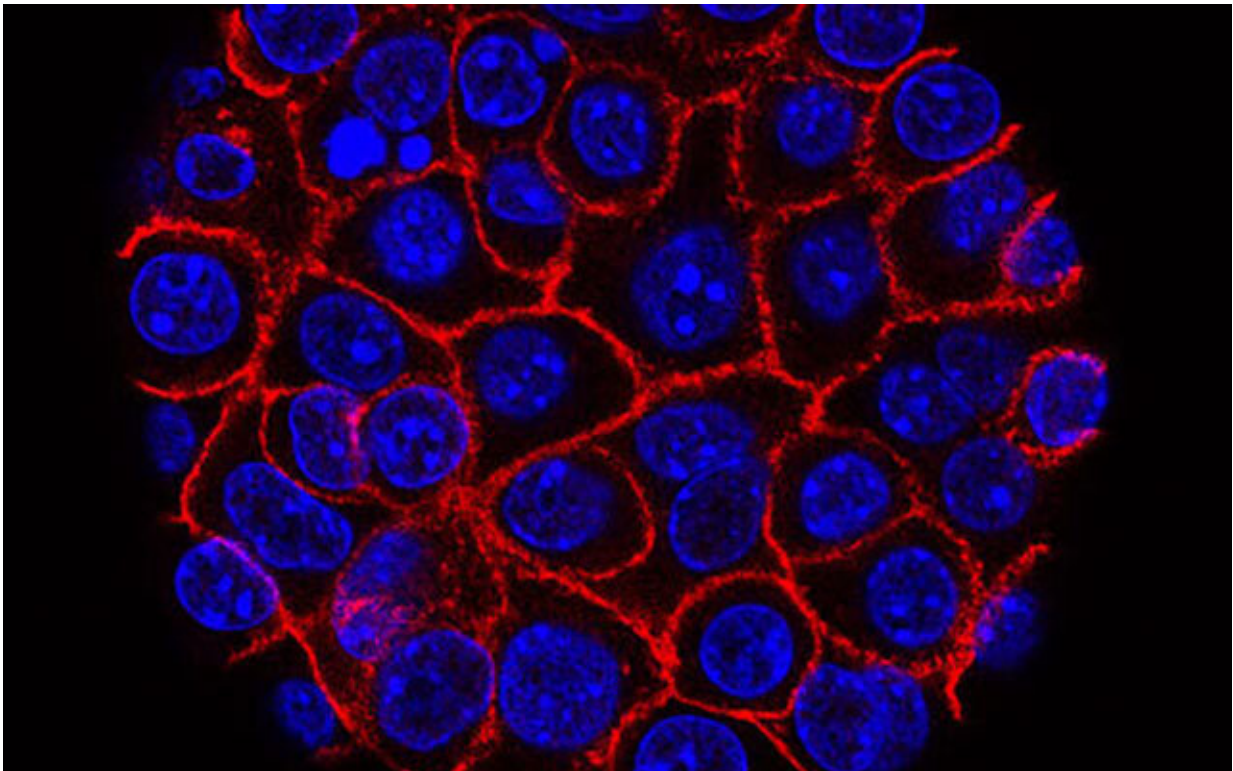


# New guidelines for pancreatic cancer screening

June 6 2022, by Chloe Meck

---



Pancreatic cancer cells (blue) growing as a sphere encased in membranes (red).  
Credit: National Cancer Institute

By the year 2030, pancreatic cancer is expected to become the second most common cause of cancer deaths for both men and women in the United States, according to recent reports. While considered uncommon,

inherited gene mutations can increase a person's risk of developing pancreatic cancer. Early detection of cancer is key to a greater chance of survival, but it is difficult to catch pancreatic cancer early as people usually have no symptoms until the cancer has advanced and hard to treat.

A clinician-researcher from Beth Israel Deaconess Medical Center (BIDMC) contributed to new national guidelines published by the American Society for Gastrointestinal Endoscopy (ASGE), recommending annual [pancreatic cancer](#) screening for patients who are at increased risk because of genetic susceptibility. While earlier guidelines had restricted screening to only those individuals with BRCA 1/2 who had a family history of pancreatic cancer, the new guidelines expand indication for screening for all with the gene variations regardless of family history.

"Because less than 25 percent of patients with BRCA 1/2 who develop pancreatic cancer have family history of pancreatic cancer, most cancers will be missed if screening is restricted to those with a [family history](#)," said first author of the guidelines Mandeep S. Sawhney, MD, MS, a gastroenterologist at BIDMC and associate professor of medicine at Harvard Medical School.

"Although screen-detected pancreatic cancers are more likely to be diagnosed at an earlier and more treatable stage, it is important to acknowledge the potential downsides of screening. These guidelines are the first to quantify harms from pancreatic cancer screening resulting from false-positive screening tests results and encourage care providers to carefully counsel their patients before enrolling in a screening program."

The new guidelines appear in *Gastrointestinal Endoscopy*.

**More information:** Mandeep S. Sawhney et al, ASGE guideline on screening for pancreatic cancer in individuals with genetic susceptibility: summary and recommendations, *Gastrointestinal Endoscopy* (2022).

[DOI: 10.1016/j.gie.2021.12.001](https://doi.org/10.1016/j.gie.2021.12.001)

Provided by Beth Israel Deaconess Medical Center

Citation: New guidelines for pancreatic cancer screening (2022, June 6) retrieved 23 April 2024 from <https://medicalxpress.com/news/2022-06-guidelines-pancreatic-cancer-screening.html>

This document is subject to copyright. Apart from any fair dealing for the purpose of private study or research, no part may be reproduced without the written permission. The content is provided for information purposes only.