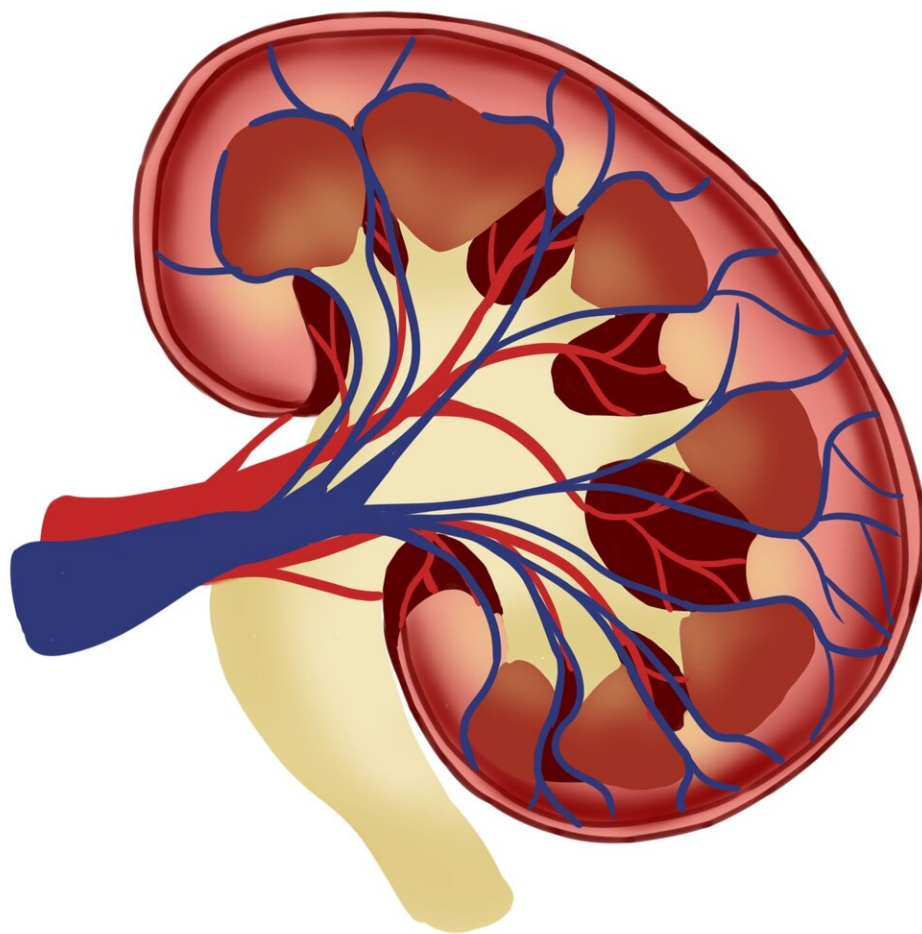


Primary glomerular disease is associated with high cardiovascular disease risk

June 1 2022



Credit: Pixabay/CC0 Public Domain

Among almost 2,000 adults with primary glomerular disease followed for a median of 6.8 years, risk of cardiovascular events including coronary artery, cerebrovascular, and peripheral vascular events; and death due to myocardial infarction or stroke was found to be 2.5-fold higher than that of the general population.

Patients with [chronic kidney disease](#) are known to be at high risk of [cardiovascular disease](#). Cardiovascular risk in patients with primary glomerular diseases is poorly understood because these conditions are rare and require a kidney biopsy for diagnosis.

In this study published in the *American Journal of Kidney Diseases (AJKD)*, the rate of cardiovascular events in 1,912 Canadian patients with biopsy-proven IgA nephropathy, minimal change disease, FSGS, and membranous nephropathy was 2.5 times as high as the general population and was high for each disease type. Consideration of disease type, kidney function, and proteinuria improved the prediction of cardiovascular events. In summary, this population-level study showed that patients with primary glomerular diseases have a high cardiovascular risk, and that inclusion of kidney-specific risk factors may improve risk stratification.

More information: Mark Canney et al, The Risk of Cardiovascular Events in Individuals With Primary Glomerular Diseases, *American Journal of Kidney Diseases* (2022). [DOI: 10.1053/j.ajkd.2022.04.005](https://doi.org/10.1053/j.ajkd.2022.04.005)

Provided by National Kidney Foundation

Citation: Primary glomerular disease is associated with high cardiovascular disease risk (2022, June 1) retrieved 17 April 2024 from <https://medicalxpress.com/news/2022-06-primary-glomerular-disease-high-cardiovascular.html>

This document is subject to copyright. Apart from any fair dealing for the purpose of private study or research, no part may be reproduced without the written permission. The content is provided for information purposes only.