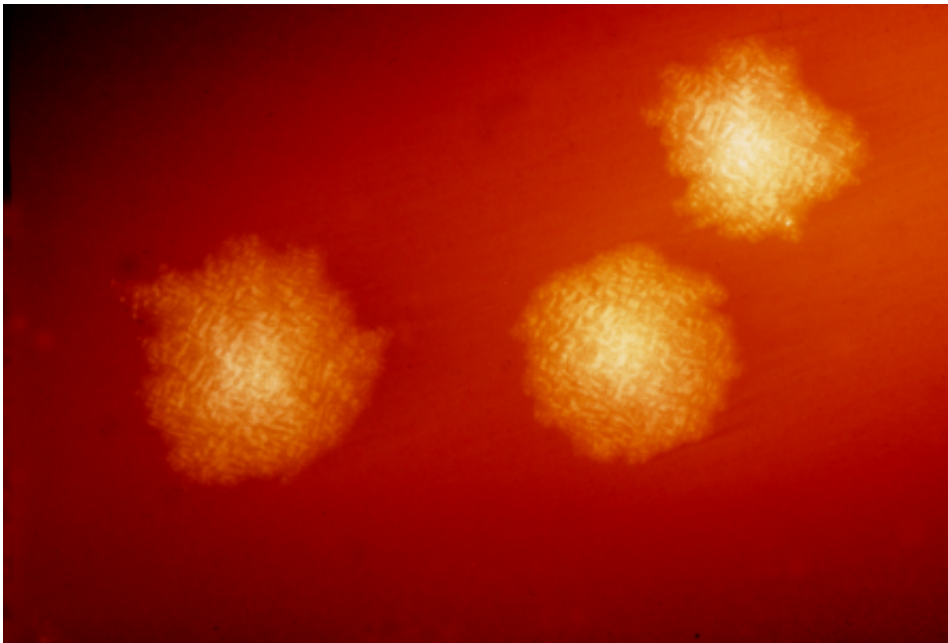


Study suggests that *C. difficile* drives some colorectal cancers

July 14 2022



This photograph depicts *Clostridium difficile* colonies after 48hrs growth on a blood agar plate; Magnified 4.8X. *C. difficile*, an anaerobic gram-positive rod, is the most frequently identified cause of antibiotic-associated diarrhea (AAD). It accounts for approximately 15–25% of all episodes of AAD. Credit: CDC

Data collected by researchers at the Johns Hopkins Kimmel Cancer Center and the Bloomberg-Kimmel Institute for Cancer Immunotherapy suggest that *Clostridioides difficile*, or *C. diff*, a bacterial species well known for causing serious diarrheal infections, may also drive colorectal cancer.

The findings were published June 9 in *Cancer Discovery*, and may expose another troublesome role for this microbe, which causes approximately 500,000 infections a year in the U.S.—many of which prove incredibly difficult to clear.

"The uptick of individuals under age 50 being diagnosed with [colorectal cancer](#) in recent years has been shocking. We found that this bacterium appears to be a very unexpected contributor to colon malignancy, the process by which [normal cells](#) become [cancer](#)," says Cynthia Sears, M.D., Bloomberg-Kimmel Professor of Cancer Immunotherapy and professor of medicine at the Johns Hopkins University School of Medicine.

Several years ago, researchers in the Sears Lab discovered that more than half of patients with colorectal cancer had bacterial biofilms—dense collections of bacteria on the colon surface—whereas 10% to 15% of healthy patients without tumors displayed biofilms. However, when the researchers infected mice with biofilm samples derived from individual people with colorectal cancer, one sample caught their attention because it markedly increased colorectal tumors in the mice. Whereas in most controls, less than 5% develop tumors, this slurry induced tumors in 85% of mice.

In additional work, the team identified a patient sample without a biofilm that similarly increased colorectal tumors in the mice. Although several bacterial species have been linked with colorectal cancer—including enterotoxigenic *Bacteroides fragilis*, *Fusobacterium nucleatum* and a specific strain of *Escherichia coli*—these microbes were either absent in the tumors of these two patients (*B. fragilis* and *E. coli*) or did not successfully colonize the mice (*F. nucleatum*), suggesting that other bacteria were responsible for promoting the colorectal cancer cascade.

To determine which bacteria may be causing tumors in the mice, Sears, along with study co-authors Julia Drewes, Ph.D., assistant professor of medicine, Jie (Angela) Chen, Ph.D., Jada Domingue, Ph.D., of Johns Hopkins, and colleagues performed additional experiments to see if a single [bacterial species](#) or a community of bacteria were promoting [tumor](#) formation in the mice. They noted that toxigenic *C. difficile*, the type of *C. difficile* that causes diarrhea, was absent in the samples that did not cause tumors, but was present in the samples that caused tumors in mice. When the researchers added this bacterium to the samples that originally did not cause tumors, it induced colon tumors in the mice. Further testing showed that *C. difficile* alone was sufficient to prompt tumor formation in the animal models.

Additional experiments led by co-author Nicholas Markham, M.D., Ph.D., assistant professor of medicine at Vanderbilt University Medical Center, and study co-leaders Franck Housseau, Ph.D., associate professor of oncology at Johns Hopkins, and Ken Lau, Ph.D., associate professor of cell and developmental biology and surgery at Vanderbilt University School of Medicine, showed that *C. difficile* brought about a range of changes within colon cells that made them vulnerable to cancer.

Cells exposed to this bacterium turned on genes that drive cancer and turned off genes that protect against cancer. These cells produced [reactive oxygen species](#), unstable molecules that can damage DNA, and they also prompted immune activity associated with harmful inflammation.

A toxin produced by this bacterium—known as TcdB—appears to cause most of this activity, the researchers say. When they used genetically engineered *C. difficile* strains that contained inactivated toxin genes and/or released a related *C. difficile* toxin called TcdA, mice infected with the TcdB-inactivated microbes produced far fewer tumors than those with TcdB-active ones, while TcdA made by *C. difficile* was not

sufficient to cause tumors.

To date, Drewes says, there is limited epidemiological data linking *C. difficile* with colorectal cancer in humans, but if further research shows that a connection exists, it could lead to screening for latent *C. difficile* infection or previous infection as a risk factor for cancer. Since lengthy exposures to TcdB may increase colorectal cancer risk, an important prevention effort could include heightened efforts to eradicate this pathogen quickly and effectively, which recurs—often repeatedly—in 15–30% of infected patients after initial treatment, including in pediatric patients.

"While this link between *C. difficile* and colorectal cancer needs to be confirmed in prospective, longitudinal cohorts, developing better strategies and therapeutics to reduce the risk of *C. difficile* primary infection and recurrence could both spare patients the immediate consequences of severe diarrhea and potentially limit colorectal cancer risk later on," Drewes says.

More information: Julia L. Drewes et al, Human Colon Cancer–Derived *Clostridioides difficile* Strains Drive Colonic Tumorigenesis in Mice, *Cancer Discovery* (2022). [DOI: 10.1158/2159-8290.CD-21-1273](https://doi.org/10.1158/2159-8290.CD-21-1273)

Provided by Johns Hopkins University School of Medicine

Citation: Study suggests that *C. difficile* drives some colorectal cancers (2022, July 14) retrieved 26 April 2024 from <https://medicalxpress.com/news/2022-07-difficile-colorectal-cancers.html>

This document is subject to copyright. Apart from any fair dealing for the purpose of private study or research, no part may be reproduced without the written permission. The content is

provided for information purposes only.