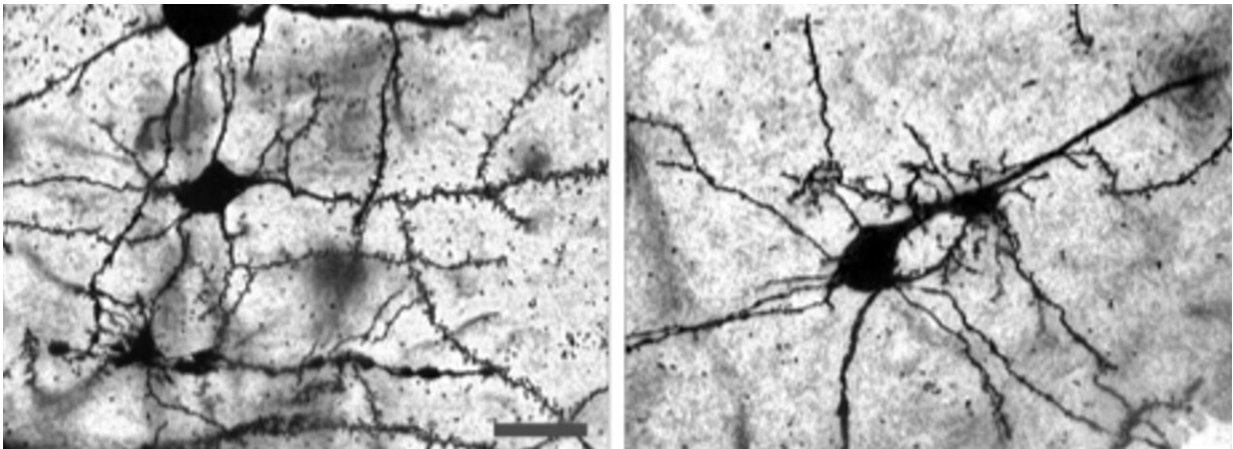


Discovery of molecular pathway through which stress affects lupus

July 11 2022



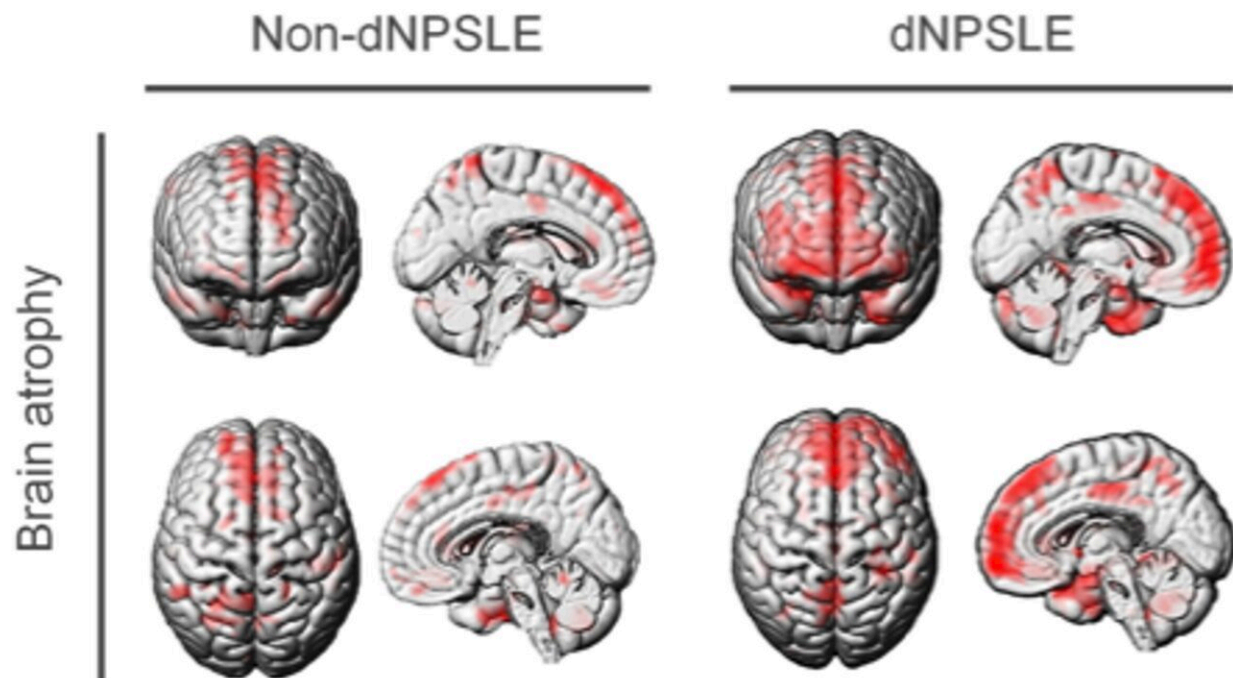
When mice that exhibit SLE-like symptoms are subjected to sleep deprivation stress, their neurons exhibit abnormal growth (left). When IL12 and 23 are blocked, the abnormal growth is reversed (right). Credit: Nobuya Abe et al, *Annals of the Rheumatic Diseases* (2022)

Systemic lupus erythematosus (SLE) is an autoimmune disease that affects all the organ systems of the body. This chronic disease includes periods of illness, called flare ups, and periods of remission, when symptoms are few. There is so far no cure for this disease; treatments involve preventing flare ups and reducing their severity and duration. One of the most severe forms of SLE is neuropsychiatric systemic lupus erythematosus (NPSLE), which affects the central nervous system—the brain and spinal cord.

A team of researchers, led by Professor Masaaki Murakami at the Institute for Genetic Medicine, Hokkaido University, have identified a stress-induced [molecular mechanism](#) that affects NPSLE, revealing a potential target for the treatment of the disease. Their findings were published in the journal *Annals of the Rheumatic Diseases*.

The research team focused on a specific type of NPSLE called Neuropsychiatric lupus with diffuse neuropsychological manifestations (dNPSLE). There are believed to be many causes for dNPSLE, but its pathogenesis remains poorly understood. The researchers were most interested in the [effects of stress](#), as [chronic stress](#) is known to be involved in the development of many autoimmune diseases.

In order to identify stress-induced [molecular mechanisms](#) that might affect dNPSLE, they conducted experiments on mice models that exhibit SLE-like symptoms. After subjecting a set of these mice to [sleep deprivation](#) stress, they were able to identify that the [medial prefrontal cortex](#) (mPFC) of the brain was abnormally activated.



Brains of patients with dNPSLE show atrophy of the medial prefrontal cortex (mPFC, in red) compared to the reference brain of healthy individuals. Credit: Nobuya Abe et al, *Annals of the Rheumatic Diseases* (2022)

In the mPFC, the expression of at least 509 genes was significantly affected by sleep deprivation. The team specifically noted the upregulation of a microglial proinflammatory gene that is required for two interleukins, IL12 and IL23. Further, they showed that upregulation of these two interleukins caused activation of the microglial cells of the mPFC. Blocking IL12 and IL23 pathways in these sleep-deprived mice models inhibited the stress-induced neuropsychiatric symptoms.

Most importantly, they showed that levels of IL12 and IL23 in the cerebrospinal fluid of human patients with dNPSLE were higher than that of healthy individuals, to such an extent that it can be used as a diagnostic marker. They also showed that the mPFC in dNPSLE patients is atrophied. Together, these indicate that the findings from the mice models may be applicable to humans.

"In revealing the effect of the stress-induced effects on the expression of IL12 and IL23 in dNPSLE, we have identified them as not only a diagnostic marker but also a novel therapeutic target for this disease," said Masaaki Murakami.

More information: Pathogenic neuropsychiatric effect of stress-induced microglial interleukin-12/23 axis in systemic lupus erythematosus, *Annals of the Rheumatic Diseases* (2022). [DOI: 10.1136/ard-2022-222566](https://doi.org/10.1136/ard-2022-222566)

Provided by Hokkaido University

Citation: Discovery of molecular pathway through which stress affects lupus (2022, July 11)
retrieved 27 April 2024 from

<https://medicalxpress.com/news/2022-07-discovery-molecular-pathway-stress-affects.html>

<p>This document is subject to copyright. Apart from any fair dealing for the purpose of private study or research, no part may be reproduced without the written permission. The content is provided for information purposes only.</p>
--