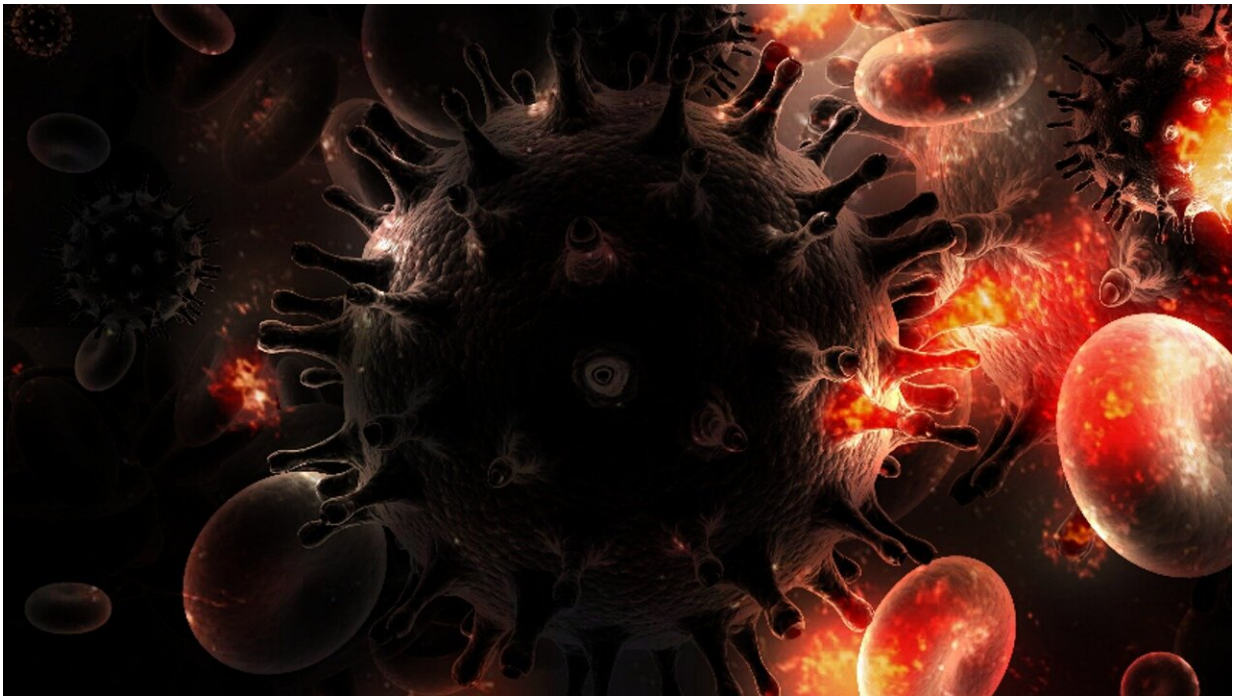


Mathematical model helps predict anal cancer risk in persons with HIV infection

July 1 2022



Credit: Pixabay/CC0 Public Domain

Both cervical and anal cancer are caused by human papillomavirus. Both diseases also share a common precursor: abnormal cells known as high-grade squamous intraepithelial lesions (HSIL).

In cervical neoplasia, treatment of HSILs has been shown to reduce progression to [cervical cancer](#). Recent published research suggests that

the same holds true with anal cancer: HSIL treatment reduced the risk of progression to invasive anal cancer by 57 percent.

Persons living with [human immunodeficiency virus](#) or HIV are at highest risk of invasive anal cancer, but state and national guidelines regarding the efficacy of cancer screening, which may involve physical exams and cell sampling, are mixed and controversial.

In a new study, published June 20, 2022 in the journal *Clinical Infectious Diseases*, researchers at University of California San Diego School of Medicine and UC San Diego Health describe a new mathematical model to help predict anal cancer risk in persons with HIV infection and aid clinicians and patients in making screening decisions.

"Unfortunately, there remains a lot of misperceptions, discomfort and stigma in addressing this topic," said first author Edward Cachay, MD, professor of medicine at UC San Diego School of Medicine and an infectious disease specialist at UC San Diego Health's Owen Clinic, the largest primary care center in San Diego for individuals with HIV.

"Our goal was to develop a model-based nomogram that would assist patients and their doctors in making anal cancer screening decisions based on predicted risk profiles."

Nomograms are mathematical models that calculate relationships between numerical variables. They are often used in cancer prognoses to predict the probability of an event, such as a positive biopsy, risk of recurrence or survival rate.

In the new study, Cachay and colleagues studied data from 8,139 persons with HIV treated at Owen Clinic between 2007 and 2020. Of that total, slightly less than half underwent at least one anal cytology test: 65 percent exhibited abnormal anal cytology results, 12.2 percent had

HSILs. Adjusted probability of having an HSIL varied from 5 to 18 percent, depending on patient characteristics and behavioral exposures.

The highest risk observed was associated with men who have sex with men (14 percent) and those who had experienced a CD4 cell count of less than 200. (CD4 cells, otherwise known as T cells, are [white blood cells](#) that fight infection and play an important role in the immune system.)

However, the authors noted that no single patient characteristic was associated with a predicted HSIL risk of less than 8 percent, highlighting the increased risk of anal cancer among persons living with HIV.

Anal cytology is a simple, inexpensive and low-complication component of screening for precursors of anal cancer. When combined with digital rectal examination, both precursor lesions and established cancers can be identified early in those at increased risk, said Cachay.

"We have solid evidence from a large randomized controlled trial that treatment of anal HSIL substantially reduces risk of progression to invasive cancer. Although national consensus guidelines have not yet endorsed screening for [anal cancer](#), we believe that there is sufficient evidence to justify shared decision-making discussions between HIV-infected patients and their clinicians regarding whether or not to screen.

"Our nomogram informs one component of a screening discussion: the risk of having the immediate precursor to invasive cancer, HSIL. It estimates quantitative risk based on modeled patient characteristics. Our paper also highlights the bounds of uncertainty regarding risk and discusses other important issues to be included in shared decision making discussions regarding screening."

More information: Edward R CACHAY et al, Shared Decision-

Making Concerning Anal Cancer Screening in Persons with HIV,
Clinical Infectious Diseases (2022). [DOI: 10.1093/cid/ciac491](https://doi.org/10.1093/cid/ciac491)

Provided by University of California - San Diego

Citation: Mathematical model helps predict anal cancer risk in persons with HIV infection (2022, July 1) retrieved 13 May 2024 from
<https://medicalxpress.com/news/2022-07-mathematical-anal-cancer-persons-hiv.html>

<p>This document is subject to copyright. Apart from any fair dealing for the purpose of private study or research, no part may be reproduced without the written permission. The content is provided for information purposes only.</p>
--