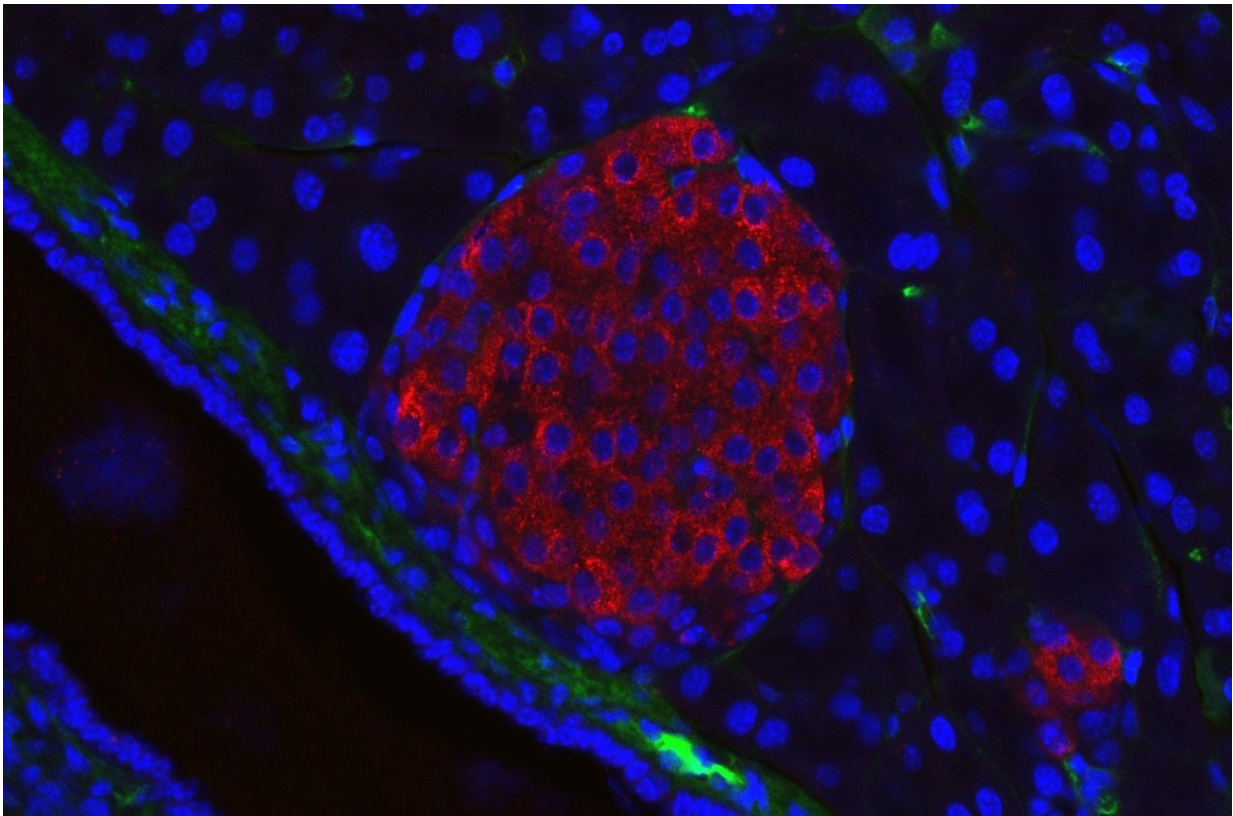


Regular screening of people at high risk for pancreatic cancer pays off

July 13 2022



A pancreatic islet from a mouse in a typical position, close to a blood vessel; insulin in red, nuclei in blue. Credit: Generated in the Solimena lab, Paul Langerhans Institute Dresden

Surveillance programs for people at high risk of developing pancreatic cancers can help detect precancerous conditions and cancers early, when

they are most treatable, according to a new multicenter study directed by experts at the Johns Hopkins Kimmel Cancer Center.

A total of 1,461 individuals at high risk of developing pancreatic cancer were enrolled in the Cancer of Pancreas Screening-5 (CAPS5) study at Johns Hopkins Medicine and seven other medical centers, and underwent annual pancreatic imaging tests. Of these participants, 10 were diagnosed with pancreatic cancer, including one participant who was diagnosed four years after dropping out of recommended surveillance. Seven of the remaining nine patients (77.8%) were diagnosed with stage I disease, and the other two had progressed to higher stage cancer (one had stage IIB, and one had stage III disease). Seven of these patients were alive after a median follow-up of 2.6 years.

These findings were published online in the June 2022 issue of the *Journal of Clinical Oncology*.

"A clear majority of patients in the CAPS program who were diagnosed with pancreatic cancer were detected at the first stage of the disease if they maintained their surveillance," says senior study author Michael Goggins, M.B.B.Ch., M.D., Sol Goldman Professor of Pancreatic Cancer Research and director of the Pancreatic Cancer Early Detection Laboratory.

In general, Goggins says, most patients presenting with symptoms already have later-stage pancreatic cancer; very few have their disease detected at stage I. Combining the CAPS5 data with statistics from previous Johns Hopkins Medicine CAPS studies that began in 1998, led by Marcia Canto, M.D., director of clinical research for the gastroenterology division, investigators found that in the entire CAPS cohort of 1,731 patients, 19 of the 26 cases of pancreatic cancer were diagnosed in patients who maintained their pancreas surveillance. Of those, 57.9% had stage I cancers, 15.8% had stage II cancers, 21.1% had

stage III cancers and 5.2% had stage IV disease. By contrast, six of the seven [pancreatic cancers](#) detected in patients who had stopped their annual surveillance (85.7%) were stage IV. The five-year survival to date of patients with a surveillance-detected pancreatic cancer is 73.3%, and [median overall survival](#) is 9.8 years, compared with 1.5 years for patients diagnosed with pancreatic cancer outside surveillance.

"Many of those diagnosed with pancreatic cancer under surveillance can be potentially cured. By contrast, people who dropped off their surveillance had poor survival rates. Our results support the CAPS surveillance recommendation that those who meet the criteria should undergo regular screenings," says Goggins.

In the CAPS5 study, investigators enrolled individuals between 2014–2021 who had a genetic variant that made them susceptible to pancreatic cancer or who had more than one first-degree relative with pancreatic cancer. Nearly half (48.5%) had a genetic variant predisposing them to cancer, including 18.4% with a mutation in the BRCA2 gene and 6.4% with a variant in the ATM gene. About a third of the group had a personal history of cancer, with breast cancer being the most commonly reported (15.8% affected). Patients received annual screenings with magnetic resonance imaging or endoscopic ultrasound.

Eight other participants had pancreatic surgeries for concerning lesions detected during surveillance. Of these, three were found to have high-grade dysplasia precancerous conditions, and five were found to have low-grade dysplasia. Also, during the study period, 73 patients were diagnosed with other cancers, including 17 cases of breast cancer, 11 cases of prostate cancer and seven cases of melanoma.

Pancreatic surveillance is best done at expert centers by multidisciplinary teams, Goggins says, because some abnormalities that show up in pancreatic imaging are of uncertain significance. Researchers

are working on blood tests that could be combined with imaging for early detection of cancers, he says.

More information: Mohamad Dbouk et al, The Multicenter Cancer of Pancreas Screening Study: Impact on Stage and Survival, *Journal of Clinical Oncology* (2022). [DOI: 10.1200/JCO.22.00298](https://doi.org/10.1200/JCO.22.00298)

Provided by Johns Hopkins University School of Medicine

Citation: Regular screening of people at high risk for pancreatic cancer pays off (2022, July 13) retrieved 16 April 2024 from <https://medicalxpress.com/news/2022-07-regular-screening-people-high-pancreatic.html>

This document is subject to copyright. Apart from any fair dealing for the purpose of private study or research, no part may be reproduced without the written permission. The content is provided for information purposes only.