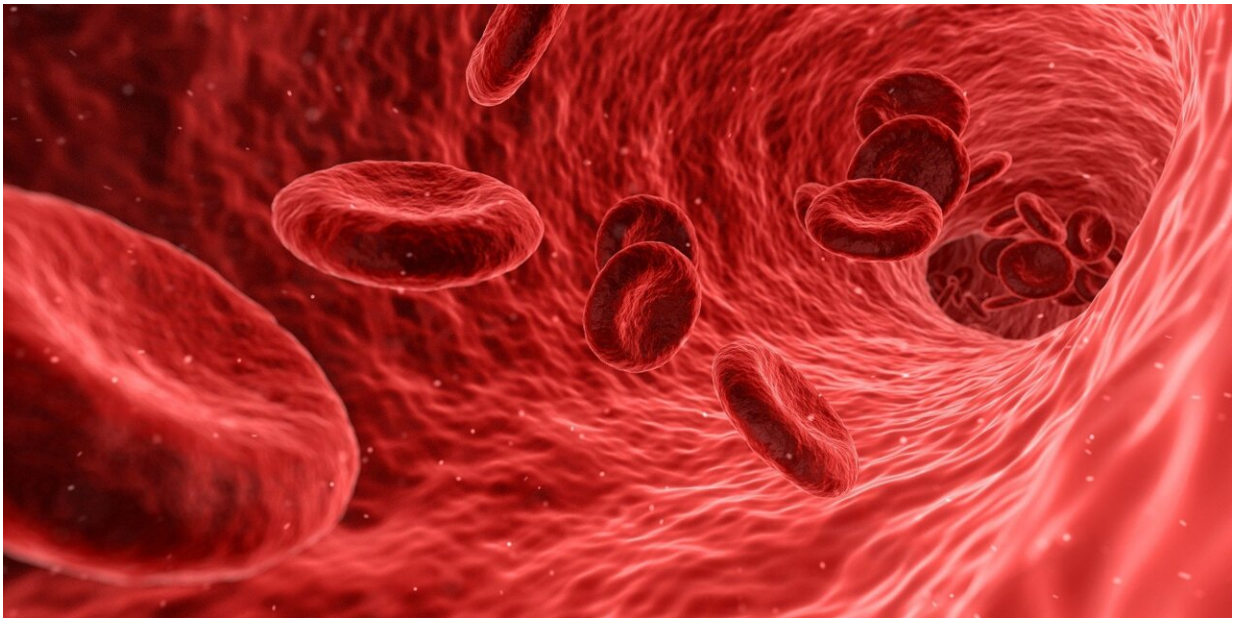


Disease activity in coronary arteries predicts future risk of death and heart attacks

August 29 2022



Credit: Pixabay/CC0 Public Domain

A non-invasive imaging technique for detecting coronary artery disease activity in patients with myocardial infarction did not predict the primary endpoint of all coronary events but did predict all-cause mortality and cardiac death or non-fatal myocardial infarction. The results of the late breaking research are presented in a Hot Line session today at ESC Congress 2022.

PRE¹⁸FFIR was the first multi-center international study to examine prospectively whether non-invasive assessment of coronary atherosclerotic [plaque](#) activity predicts recurrent cardiac events in patients with [myocardial infarction](#). Prediction is currently performed with clinical risk scores and assessment of obstructive [coronary artery](#) disease, but accuracy is lacking. High-risk coronary artery plaques identified using invasive imaging approaches have been associated with future coronary events, but these techniques are impractical for widespread clinical use.

A retrospective post hoc pooled analysis of patients with [cardiovascular disease](#) previously found that increased coronary plaque activity (called coronary microcalcification activity; CMA) was associated with a greater risk of myocardial [infarction](#).² CMA is a measure of coronary atherosclerotic plaque activity assessed using non-invasive 18F-sodium fluoride positron emission tomography (PET) and computed tomography [coronary angiography](#) (CTCA). It is based on the finding that coronary artery 18F-sodium fluoride uptake is a marker of active calcification in lipid-rich necrotic atheromatous plaques.

The PRE¹⁸FFIR study investigated whether CMA could predict recurrent coronary events in patients with recent myocardial infarction. Between 2015 and 2020, the trial enrolled 704 patients aged 50 years or older with a recent (within 21 days) myocardial infarction and multivessel coronary artery disease on invasive coronary angiography or previous coronary revascularization. The primary endpoint was cardiac death or non-fatal myocardial infarction but was expanded during the study to include unscheduled coronary revascularization due to lower than anticipated primary event rates.

The average age of participants was 64 years and 85% were men. Some 89% had multivessel coronary artery disease, 7% had left main stem disease, and 4% had one-vessel disease. All participants underwent 18F-

sodium fluoride PET and CTCA, and CMA was determined by an independent blinded core laboratory. CMA=0 indicates low coronary atherosclerotic plaque activity and CMA>0 indicates high coronary atherosclerotic plaque activity. A total of 421 patients had CMA>0 and 283 patients had CMA=0. The two groups had similar mean Global Registry of Acute Coronary Events (GRACE) scores and severity of coronary artery disease.

During a median follow up of four years, the composite primary endpoint of cardiac death, non-fatal myocardial infarction, or unscheduled coronary revascularization occurred in 51 patients (18%) in the CMA=0 group and 90 patients (21%) in the CMA>0 group. Increased coronary atherosclerotic plaque activity was not associated with the primary endpoint (hazard ratio [HR] 1.25; 95% confidence interval [CI] 0.89–1.76; $p=0.20$). This was principally due to the lack of an association with unscheduled coronary revascularization (HR 0.98 ; 95% CI 0.64–1.49 ; $p=0.91$). In secondary analyses, increased coronary atherosclerotic plaque activity was associated with all-cause mortality (HR 2.43; 95% CI 1.15–5.12; $p=0.020$) and with the original primary endpoint of cardiac death or non-fatal myocardial infarction (HR 1.82; 95% CI 1.07–3.10; $p=0.028$).

The imaging protocol was associated with 15 adverse events, which were principally venous cannula-related or contrast reactions. Two events were graded as serious: one patient experienced palpitations and one patient had beta-blocker induced bradycardia.

Chief investigator Professor David Newby of the University of Edinburgh, UK says that "increased coronary atherosclerotic plaque activity is not associated with all [coronary events](#) but predicts [cardiac death](#) or non-fatal myocardial infarction and all-cause mortality. The association remained after adjusting for the severity of obstructive [coronary artery disease](#) or GRACE score. These findings indicate that

coronary atherosclerotic plaque activity predicts spontaneous recurrent atherothrombotic events. CMA assessment could guide the application of more intensive lipid-lowering, anti-inflammatory or other advanced therapies to prevent recurrent spontaneous atherothrombotic events."

More information: Conference: [www.escardio.org/Congresses-&- ...
ongress/Registration](http://www.escardio.org/Congresses-&-.../Congress/Registration)

Provided by European Society of Cardiology

Citation: Disease activity in coronary arteries predicts future risk of death and heart attacks (2022, August 29) retrieved 5 May 2024 from <https://medicalxpress.com/news/2022-08-disease-coronary-arteries-future-death.html>

<p>This document is subject to copyright. Apart from any fair dealing for the purpose of private study or research, no part may be reproduced without the written permission. The content is provided for information purposes only.</p>
--