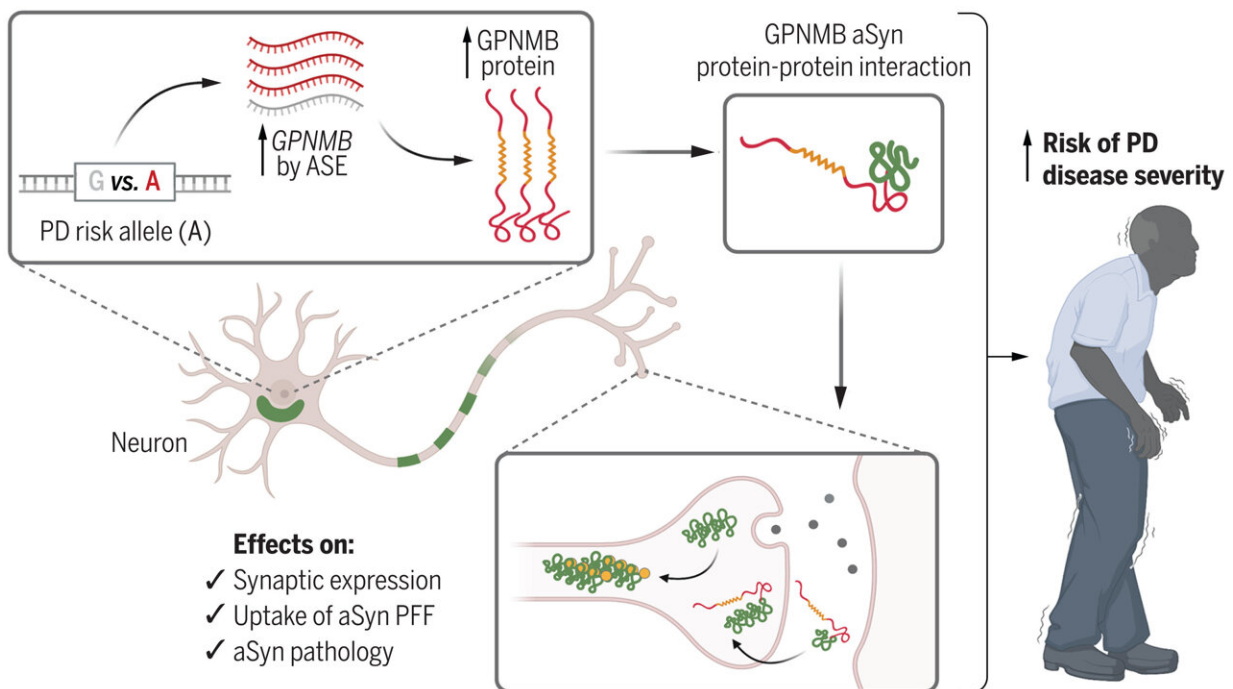


Increased concentrations of GPNMB in blood samples could be biomarker for Parkinson's disease

August 19 2022, by Bob Yirka



Haplotypes associated with PD result in increased expression of GPNMB, encoding GPNMB. GPNMB interacts with aSyn, with effects on aSyn expression at the synapse, cellular uptake of fibrillar aSyn, and development of aSyn pathology in neurons. Together, these cellular processes mediate risk for development and progression of PD. Created with BioRender.com. PFF, preformed fibril. Credit: *Science* (2022). DOI: 10.1126/science.abk0637

A large team of researchers working at the University of Pennsylvania, has found evidence that suggests increased concentrations of the transmembrane protein Glycoprotein Nonmetastatic Melanoma Protein B (GPNMB) in blood samples could be an early biomarker for Parkinson's disease. In their paper published in the journal *Science*, the group describes how they studied possible risk factors associated with chromosome 7 in Parkinson's disease patients and what they found regarding a link to the GPNMB. Brit Mollenhauer and Christine A. F. von Arnim have published a Perspectives piece in the same journal issue outlining the work done by the team in Philadelphia.

Parkinson's disease is a neurodegenerative disease that leads to shaking and stiffness of limbs and appendages along with problems with balance—as the disease progresses, most patients develop problems with walking. Its cause is still under investigation though most in the field believe it is an instance of a genetic disorder making people more susceptible to some still unknown environmental element. And while there are a number of therapies used to treat symptoms (such as dopamine), there is no cure.

Prior research has shown that damage to nerves begins long before patients experience symptoms. For that reason, scientists have been looking for early markers that could be used to allow for earlier diagnosis and treatment. In this new effort, the researchers began their work by noting that, despite the identification of multiple genes that are thought to contribute to a risk for developing the disease, the actual genes involved are still not known. For that reason, they chose to focus their work on the development of α -synuclein (aSyn)—fibrils that form in Parkinson's patients that are a hallmark of the disease.

To learn more about the role aSyn plays in the development of the disease, the researchers conducted a [genome-wide association study](#) regarding [risk factors](#) associated with chromosome 7. Then using a number of recently developed techniques, they found that they were able

to see that aSyn interacted with GPNMB and that such interactions were necessary for an uptake of the fibrils. They also found increasing amounts of GPNMB in [blood samples](#) as the disease progressed—a finding that suggests measurement of GPNMB levels in patients believed to be at risk of development of the disease could be used as a [diagnostic tool](#).

More information: Maria E. Diaz-Ortiz et al, GPNMB confers risk for Parkinson's disease through interaction with α -synuclein, *Science* (2022). [DOI: 10.1126/science.abk0637](https://doi.org/10.1126/science.abk0637)

Brit Mollenhauer et al, Toward preventing Parkinson's disease, *Science* (2022). [DOI: 10.1126/science.add7162](https://doi.org/10.1126/science.add7162)

© 2022 Science X Network

Citation: Increased concentrations of GPNMB in blood samples could be biomarker for Parkinson's disease (2022, August 19) retrieved 28 April 2024 from <https://medicalxpress.com/news/2022-08-gpnmb-blood-samples-biomarker-parkinson.html>

<p>This document is subject to copyright. Apart from any fair dealing for the purpose of private study or research, no part may be reproduced without the written permission. The content is provided for information purposes only.</p>
--