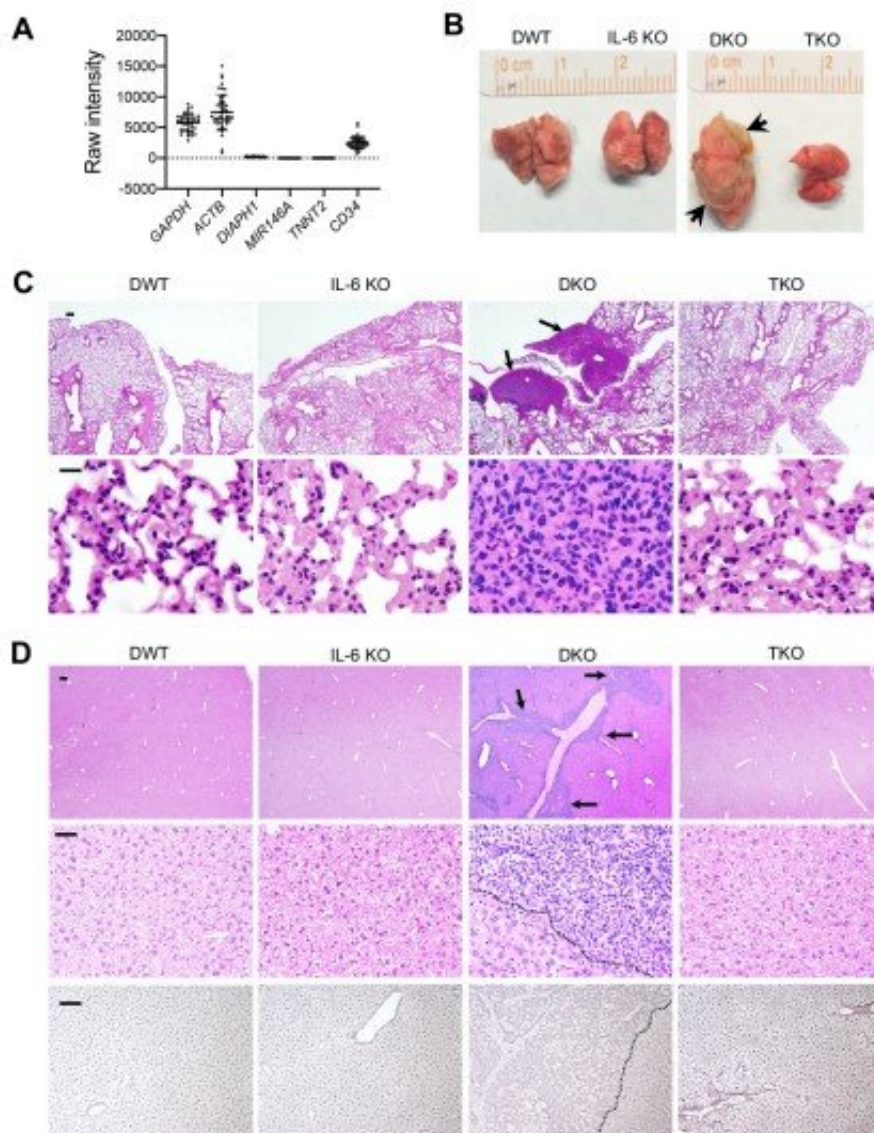


Inflammatory signaling linked to leukemia progression

August 16 2022, by Kevin McCullough



Loss of IL-6 rescues multi-organ leukemia infiltrations in DKO mice. (A) Microarray gene expression data of bone marrow CD34⁺ cells from 47 MDS

patients. Housekeeping genes GAPDH and ACTB were plotted to demonstrate the modest raw intensity without normalization. TNNT2 and CD34 were plotted as negative and positive controls, respectively. Data is from GSE160727. (B) Representative gross images of the lungs from the indicated mice at the age of 12–14 months. Arrows indicate tumors. (C) Representative images of H&E staining of the lung tissues from A. Arrows indicate the blasts involvement in DKO mice, which was illustrated in the image below. Scale bars: 100 μ m. (D) Representative images of H&E staining and reticulin staining (bottom row) of the liver tissues from indicated mice at the age of 12–14 months. Arrows in the DKO panel indicate blast infiltration. The dotted lines on DKO panels separate normal and neoplastic tissues. Scale bar: 100 μ m. Credit: *Journal of Clinical Investigation* (2022). DOI: 10.1172/JCI152673

An inflammatory signaling protein called interleukin-6 has been linked to the progression of acute myeloid leukemia, representing a potential target for future treatments of the disease, according to a recent Northwestern Medicine study published in the *Journal of Clinical Investigation*.

Myelodysplastic syndromes (MDS) are aging-related disorders in which the body produces [blood cells](#) ineffectively, which carries the risk of progression to [acute myeloid leukemia](#). While the increased risk of [leukemia](#) from MDS has been well-established, the exact mechanisms behind the progression, especially in relationship to aging, have been poorly understood.

"We are surprised to find that IL-6, among many other inflammatory signaling proteins, plays an essential role in MDS to AML progression during aging" said Peng Ji, MD, Ph.D., GME, associate professor of Pathology in the Divisions of Experimental Pathology and Hematopathology, was the senior author of the study.

In the current study, the authors investigated mice that had been engineered to develop a condition that closely mimics MDS. Observing the progression of disease, the scientists found that as the mice with MDS aged, they progressed to acute myeloid leukemia, and furthermore, a signaling protein known as interleukin-6 (IL-6) played a pivotal role in that progression.

Noting that the presence of IL-6 was strongly increased in the mice with MDS, the authors investigated what happened when IL-6 was also genetically removed from the mice. They found that the progression of MDS to leukemia was significantly reduced.

Based on the findings in mice, the authors investigated the bone marrow of [human patients](#) with MDS, and found that expression of two types of receptors for IL-6 were notably increased in high-risk MDS patients, but not in patients with a lower risk of progressing to acute myeloid leukemia.

The authors then used cells derived from patients with MDS, and treated them with tocilizumab, a monoclonal antibody against one of the IL-6 receptors which is used clinically to treat rheumatoid arthritis. After treatment, the cells showed reduced [cell proliferation](#) and clonogenicity—the propensity for a cell to clone itself and grow into a colony of similar cells.

The findings taken together, according to the authors, suggest targeting the IL-6 signaling pathway is a promising strategy to prevent the progression of MDS in human patients to acute myeloid leukemia.

Future studies will examine whether specific groups of cells in the body are essential for producing IL-6. A possible clinical trial using tocilizumab to treat high risk MDS patients is also being planned.

More information: Yang Mei et al, Bone marrow confined IL-6 signaling mediates the progression of myelodysplastic syndromes to acute myeloid leukemia, *Journal of Clinical Investigation* (2022). [DOI: 10.1172/JCI152673](https://doi.org/10.1172/JCI152673)

Provided by Northwestern University

Citation: Inflammatory signaling linked to leukemia progression (2022, August 16) retrieved 26 June 2024 from <https://medicalxpress.com/news/2022-08-inflammatory-linked-leukemia.html>

<p>This document is subject to copyright. Apart from any fair dealing for the purpose of private study or research, no part may be reproduced without the written permission. The content is provided for information purposes only.</p>
--