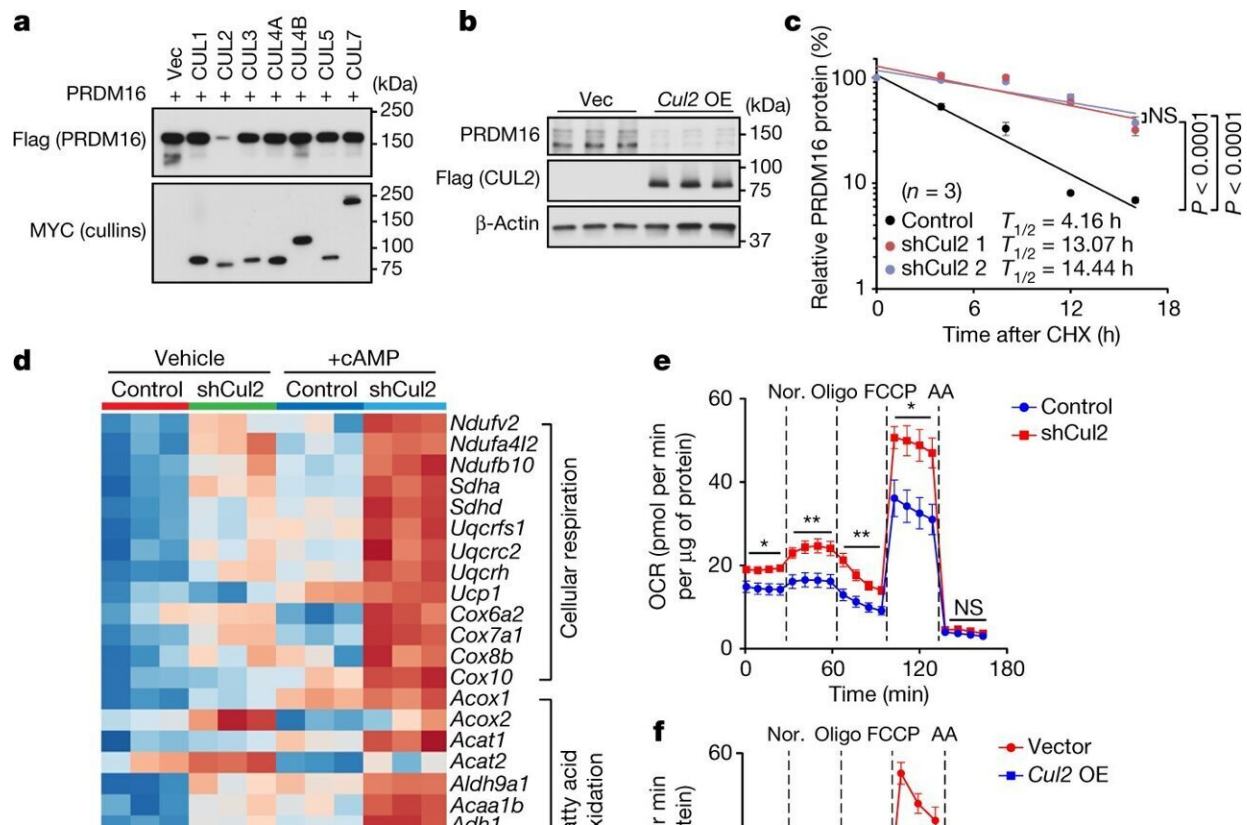


Researchers identify a key enzyme that controls white-to-brown fat conversion

August 17 2022, by Jacqueline Mitchell



CUL2 controls PRDM16 protein stability and beige fat biogenesis. **a**, Immunoblotting of Flag-tagged PRDM16 protein in HEK293T cells co-expressing Myc-tagged cullin proteins or an empty vector (Vec). **b**, Immunoblotting of endogenous PRDM16 protein in inguinal adipocytes overexpressing (OE) Flag-tagged CUL2 or Vec. β -Actin was used as the loading control. **c**, Changes in endogenous PRDM16 stability in inguinal adipocytes expressing a scrambled control shRNA (control) or shRNAs targeting *Cul2* (1 and 2). $n = 3$ per group. CHX, cycloheximide. **d**, Heat map of the RNA-seq

transcriptome in differentiated inguinal adipocytes expressing a scrambled control (control) or shRNA targeting *Cul2* in the presence or absence of forskolin (+cAMP). $n = 3$ per group. All of the listed genes are significantly different (false-discovery rate (FDR))

Citation: Researchers identify a key enzyme that controls white-to-brown fat conversion (2022, August 17) retrieved 12 May 2024 from <https://medicalxpress.com/news/2022-08-key-enzyme-white-to-brown-fat-conversion.html>

<p>This document is subject to copyright. Apart from any fair dealing for the purpose of private study or research, no part may be reproduced without the written permission. The content is provided for information purposes only.</p>
--