

Rehospitalization is lower in adults with heart disease when they are treated for comorbid sleep apnea

September 15 2022

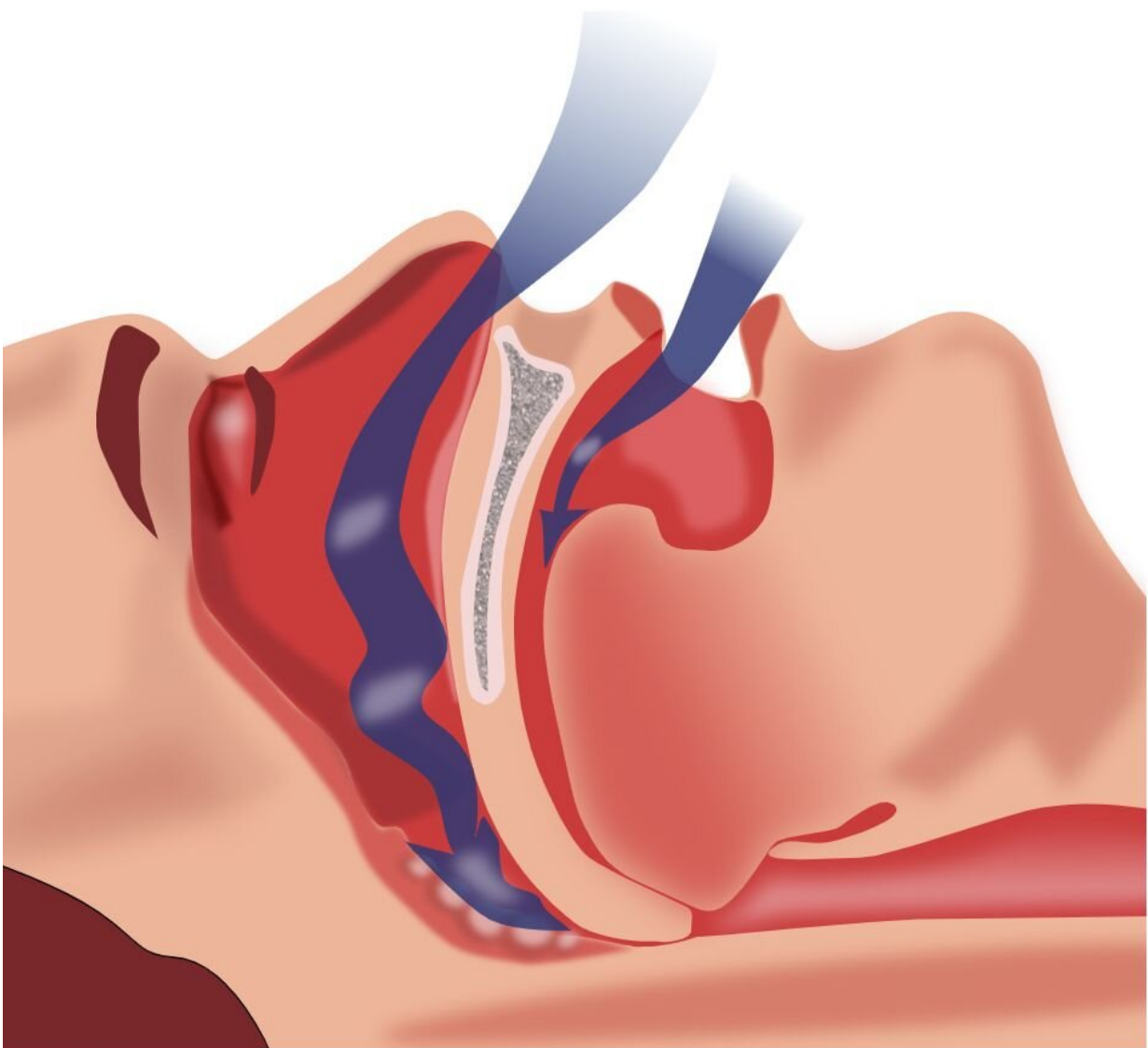


Illustration of obstruction of ventilation. Credit: Habib M'henni / public domain

Consistent use of CPAP treatment in patients with known heart disease and newly diagnosed obstructive sleep apnea is associated with a lower likelihood of rehospitalization, according to a new study published Aug. 8 as an accepted paper in the online *Journal of Clinical Sleep Medicine*.

Results show that the risk of 30-day hospital readmission among those with cardiovascular disease and high adherence to CPAP for sleep apnea was 60% lower relative to those with low adherence to CPAP. The results highlight the importance of screening for and treating [obstructive sleep apnea](#) among individuals with cardiovascular disease, the authors wrote.

"Cardiovascular disease is the number one killer of [older adults](#) in the world," said corresponding author Jennifer Albrecht, who has a doctorate in epidemiology and is an associate professor of epidemiology and public health at the University of Maryland School of Medicine in Baltimore. "Older adults with comorbid cardiovascular disease and obstructive sleep apnea are a vulnerable population at high risk for hospital readmission. Our data show that successful treatment of obstructive sleep apnea can greatly reduce the risk of 30-day hospital readmission."

Nearly 30 million adults in the U.S. have obstructive sleep apnea, a chronic disease that involves repeated collapse of the upper airway during sleep. It is found in 40%-60% of people diagnosed with cardiovascular disease. Obstructive sleep apnea is commonly treated with CPAP therapy, which uses mild levels of air pressure, provided through a mask, to keep the airway open during sleep.

The retrospective cohort study looked at Medicare recipients with cardiovascular disease who were newly diagnosed with obstructive sleep apnea between 2009 and 2013, initiated CPAP, and were hospitalized. Of the 1,301 patients who met the study criteria, the mean age was 73 years, and 53% were men. The 30-day readmission rate over the two-year period following CPAP initiation was 10.2%. Thirty-three percent of the study sample had low CPAP adherence, 38% had partial adherence, and 28.5% had high adherence. Relative to low adherence, Medicare beneficiaries with high adherence were 60% less likely to be readmitted to the hospital within 30 days.

"Obstructive sleep apnea is highly treatable, and treatment improves quality of life," said Albrecht. "Treatment can also reduce 30-day readmissions, a major driver of health care costs in the U.S. If patients show signs of obstructive sleep apnea, such as snoring, [daytime sleepiness](#), or poor sleep quality, they should talk to their doctor, and doctors should ask about sleep, especially when caring for older adult patients with [cardiovascular disease](#)."

More information: M. Doyinsola Bailey et al, Adherence to continuous positive airway pressure reduces the risk of 30-day hospital readmission among older adults with comorbid obstructive sleep apnea and cardiovascular disease, *Journal of Clinical Sleep Medicine* (2022). [DOI: 10.5664/jcsm.10196](https://doi.org/10.5664/jcsm.10196)

Provided by American Academy of Sleep Medicine

Citation: Rehospitalization is lower in adults with heart disease when they are treated for comorbid sleep apnea (2022, September 15) retrieved 6 May 2024 from <https://medicalxpress.com/news/2022-09-rehospitalization-adults-heart-disease-comorbid.html>

This document is subject to copyright. Apart from any fair dealing for the purpose of private study or research, no part may be reproduced without the written permission. The content is provided for information purposes only.