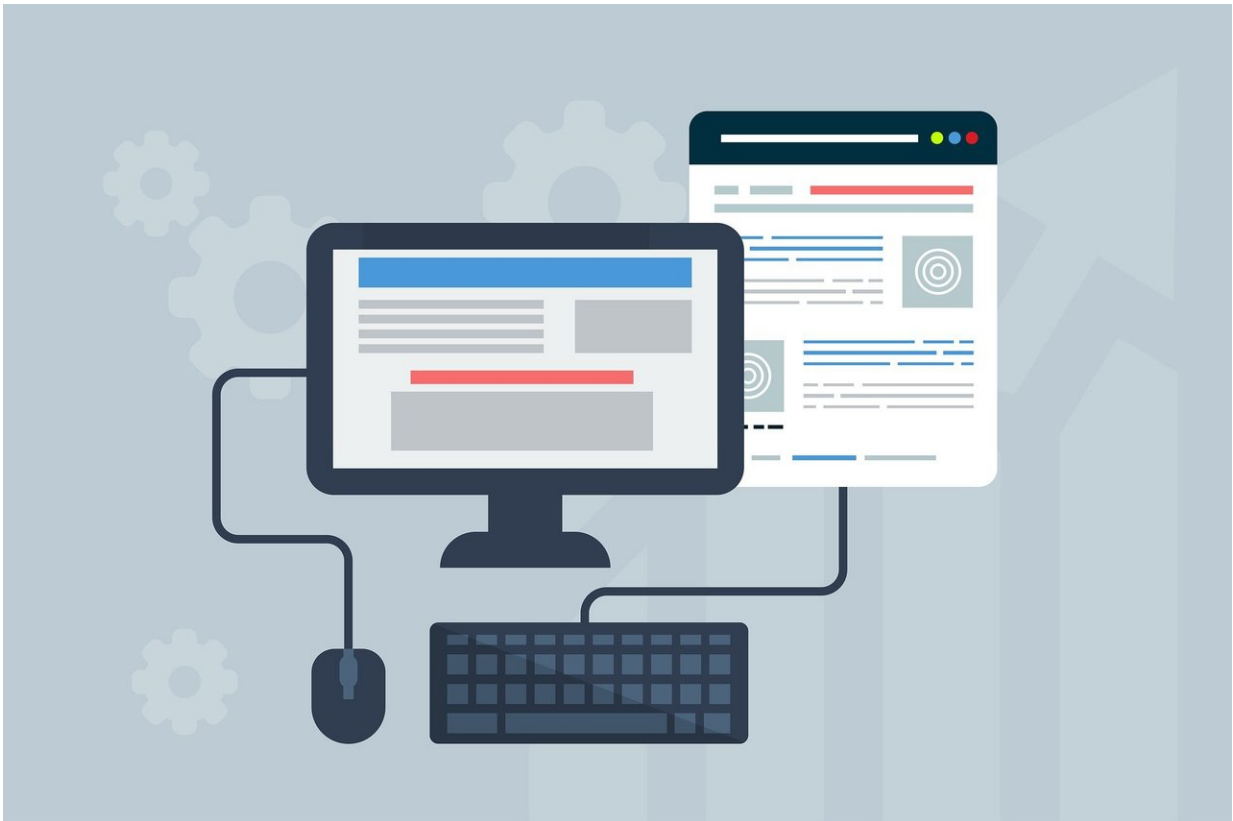


New approach could mean faster understanding in public health crisis

October 17 2022



Credit: CC0 Public Domain

When a public health crisis happens, it's often quickly an international problem, and health care professionals around the world need to have rapid access to the best guidelines for diagnosis and treatment as well as

policy direction.

A research team led by Holger Schünemann of McMaster University has found that a website giving a map of the recommendations works better than a conventional website for distributing the information effectively. The team's work was published in *PLOS Global Public Health*.

The study was done for the World Health Organization (WHO) and Canadian Institutes of Health Research testing accessibility to recommendations for [tuberculosis](#), a preventable and curable disease which is still the world's top infectious killer.

"What are public health recommendations worth if the public doesn't understand them?" asked Schünemann, a McMaster professor of clinical epidemiology and medicine as well as co-director of the WHO Collaborating Centre for Infectious Diseases, Research Methods and Recommendations.

"We found the new approach is much more accessible, people are more satisfied, and most important, we tested and found the new presentation improved the understanding of the information."

Schünemann added that the research group has also applied the methodology to digitize and present all COVID-19 guidelines.

More information: Micayla Matthews et al, Comparing the usability of the World Health Organization's conventional tuberculosis guidelines to the eTB recommendations map: A two-arm superiority randomised controlled trial, *PLOS Global Public Health* (2022). [DOI: 10.1371/journal.pgph.0001166](#)

The WHO eTB Guidelines are found at who.tuberculosis.recmap.org/grid

Provided by McMaster University

Citation: New approach could mean faster understanding in public health crisis (2022, October 17) retrieved 10 May 2024 from

<https://medicalxpress.com/news/2022-10-approach-faster-health-crisis.html>

This document is subject to copyright. Apart from any fair dealing for the purpose of private study or research, no part may be reproduced without the written permission. The content is provided for information purposes only.