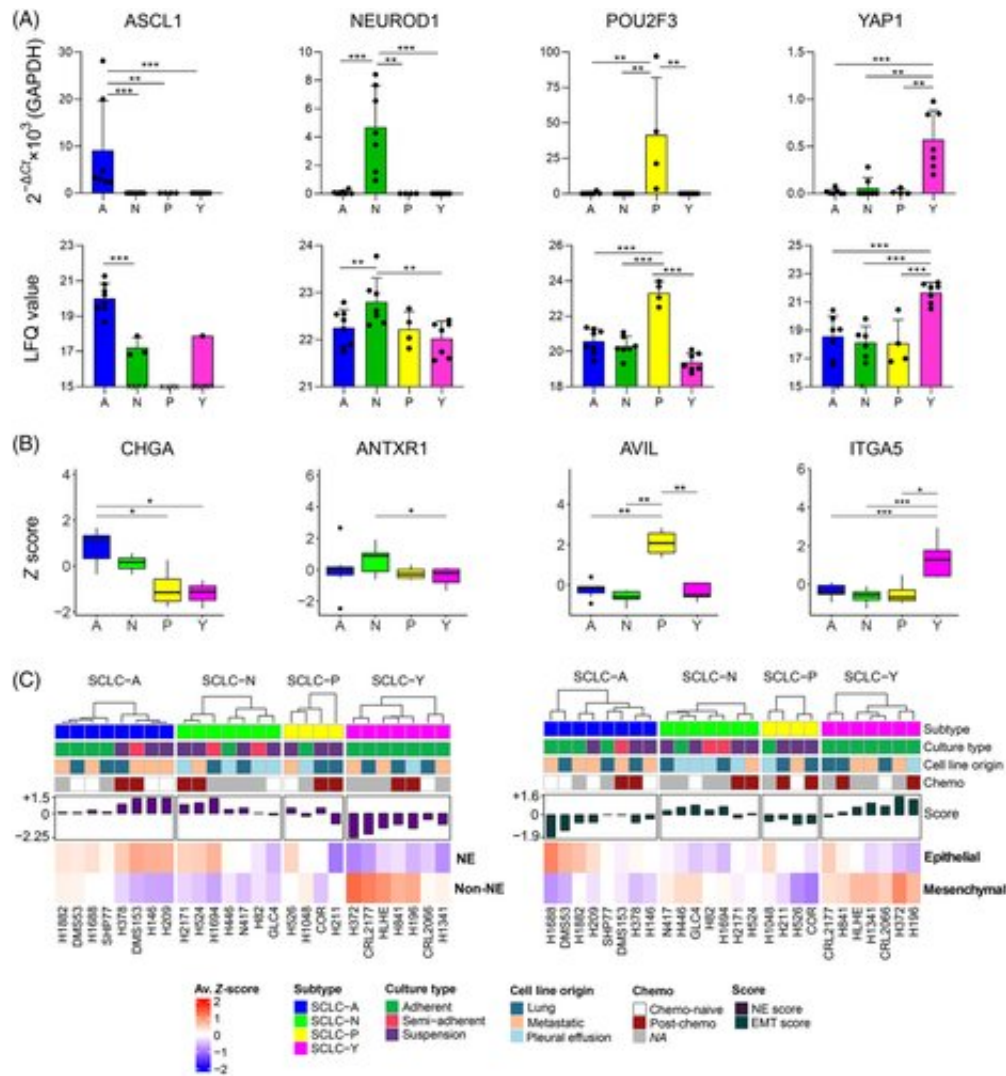


New approaches to personalized treatment for small cell lung cancer

October 6 2022, by Johannes Angerer



Proteomic analysis of small-cell lung cancer (SCLC) cell lines highlights molecular heterogeneity: (A) The mRNA expression of key genes ASCL1, NEUROD1, POU2F3 and YAP1 to determine the molecular subtypes (top). Data is shown as mean \pm SD of the $2^{-\Delta Ct} \times 1000$ value, normalized to

glyceraldehyde 3-phosphate dehydrogenase (GAPDH). Each dot represents one cell line and is the mean of two biological replicates performed in triplicates. The significance of Mann–Whitney U tests is indicated above the boxplots (*p

Citation: New approaches to personalized treatment for small cell lung cancer (2022, October 6) retrieved 25 April 2024 from

<https://medicalxpress.com/news/2022-10-approaches-personalized-treatment-small-cell.html>

This document is subject to copyright. Apart from any fair dealing for the purpose of private study or research, no part may be reproduced without the written permission. The content is provided for information purposes only.