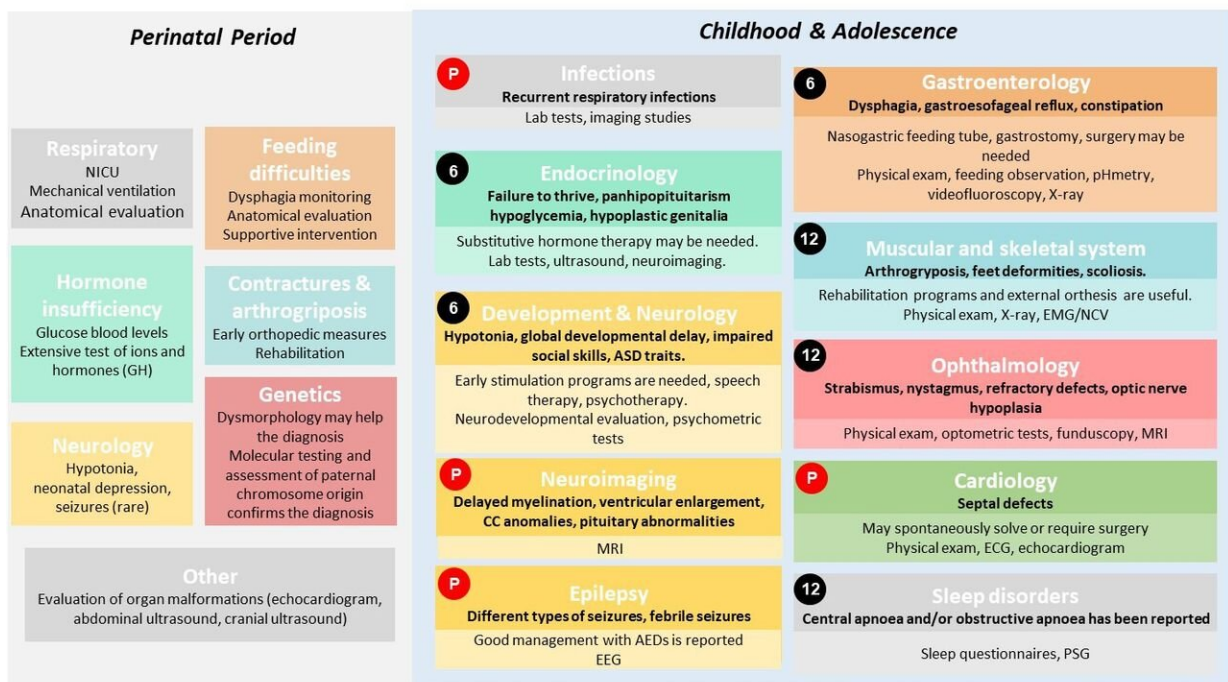


First clinical guideline on Schaaf-Yang syndrome for professionals and families

October 26 2022

Schaaf-Yang Syndrome Clinical Management



Numbers in black dots state the recommended periodicity for clinical evaluation in months for every specialty for all the individuals. A P in a red dot means that those complementary exams and management tools need to be personalized, and applied only if patient's personal characteristics require them, always following the medical team criteria.

Schematic guidelines for Schaaf-Yang syndrome clinical management. AEDs, anti epileptic drugs; ASD, autism spectrum disorder; CC, corpus callosum; EEG, electroencephalogram; EMG/NCV, electromyogram/nerve conduction velocity; GH, growth hormone; NICU, neonatal intensive care unit; PSG, polysomnography. Perinatal period: Boxes include the medical area of disease. Medical problems and management requirements are detailed below. Childhood and adolescence: Boxes include medical area of disease. Medical problems and diagnosis are detailed below in bold. Management recommendations and complementary examinations are below, not in bold letters with lighter colors at

the bottom. Numbers in black dots state the recommended periodicity for clinical evaluation in months for every specialty for all the individuals. In contrast, a P in a red dot means that those complementary examinations and management tools need to be personalized, and applied only if patient's personal characteristics require them, always following the medical team criteria. For instance, MRI and cardiology are recommended at diagnosis/birth for all patients, but follow-up depends on comorbidities. Credit: *Journal of Medical Genetics* (2022). DOI: 10.1136/jmg-2022-108690

Improving knowledge of Schaaf-Yang syndrome (SYS), an ultra-rare disease caused by mutations in the MAGEL2 gene, is the aim of the first clinical guideline aimed at health care professionals and families of children affected by it. The article, published in the *Journal of Medical Genetics*, has revealed the effects of the truncated MAGEL2 protein on cell physiology.

The article is based on a project led by researchers Raquel Rabionet and Susanna Balcells, from the Faculty of Biology and the Institute of Biomedicine (IBUB) of the University of Barcelona, the Sant Joan de Déu Research Institute (IRSJD) and the Rare Diseases Networking Biomedical Center (CIBERER), and Roser Urreizti, CIBERER researcher attached to the Sant Joan de Déu Research Institute and the Hospital Sant Joan de Déu Barcelona, with the participation of research teams from the aforementioned institutions.

Schaaf-Yang syndrome (SYS) is an ultra-rare disease caused by mutations in the MAGEL2 gene, located on chromosome 15. The MAGEL2 gene is mainly expressed in the brain and its protein is key in the transport complex and the recycling regulation of certain proteins within cells. Patients with SYS show a wide variety of clinical signs and symptoms, the most common of which are neurodevelopmental and intellectual delay, sleep disturbance, facial dysmorphism and joint

contractures.

The loneliness of having an ultra-rare disease is one of the great difficulties faced by affected families. Currently, only 11 cases of Schaaf-Yang syndrome are known in Spain, and fewer than 200 worldwide. This low incidence makes standardized [medical care](#) difficult, as there are neither clear clinical guidelines nor specific or follow-up treatments.

"Often, families and professionals face a great uncertainty due to a lack of information. For this reason, it is vital to have evidence-based recommendations that help improve [clinical care](#) and empower families about the natural course of the disease," notes Merche Serrano, neuropediatrician at the Sant Joan de Déu Barcelona Hospital, researcher at the IRSJD and coordinator of the clinical part of the study.

An evidence-based guide for professionals and families

The research team reviewed all the articles and studies on SYS that had been published, with the aim of producing a comprehensive clinical guideline for healthcare professionals and families, so that both groups would have more knowledge about the disease when taking care of the patients.

The clinical guideline includes the most relevant medical problems divided into two time periods: the first includes the first 28 days of life, and the second includes childhood and adolescence. The most appropriate interventions for each problem have also been indicated, as well as the best possible follow-up guidelines. This guide aims to ensure the best possible care for all children.

"We have also made a guideline and material aimed at families, at the request of the Schaaf-Yang Syndrome Families Association, which will help them learn about the evolution of the disease and will empower them," says Roser Urreizti. "For us, it is very important to work closely with families and patients, especially in minority diseases where patients play a key role in advancing in the research," concludes the researcher.

The toxic effect of the truncated protein MAGEL2

The extensive review of the scientific literature has also mapped all the mutations in the MAGEL2 gene, most of which result in a truncated (non-functional) protein or a protein with a partial or complete lack of the MHD domain, leading to a malfunctioning of the protein.

The MAGEL2 gene is located on chromosome 15 and it produces the MAGEL2 protein, which is part of the endosomal protein recycling and retrograde transport complex, as well as other functions.

"Our studies show that the mutated MAGEL2 protein is retained in the nucleus of cells, where it may alter the expression and regulation of other genes, while exerting a toxic effect on the cell. We observed low levels of beta-amyloid (A β) 1-40 and intracellular glutamine in fibroblasts from the patients. These two molecules could serve as possible biomarkers to evaluate future treatments," says Laura Castilla, first author of the study (UB-IBUB-IRSJD-CIBERER).

The results confirm that the phenotype of Schaaf-Yang syndrome could cause this toxic effect of the truncated MAGEL2 protein, rather than the lack of normal functionality as observed in fibroblasts from the patients the researchers studied.

The predoctoral researchers Mònica Centeno and Aina Prat will continue these studies with the analysis of MAGEL2 function in brain organoids

generated from patient-derived pluripotent cells.

More information: Laura Castilla-Vallmanya et al, Advancing in Schaaf-Yang syndrome pathophysiology: from bedside to subcellular analyses of truncated MAGEL2, *Journal of Medical Genetics* (2022).
[DOI: 10.1136/jmg-2022-108690](https://doi.org/10.1136/jmg-2022-108690)

Provided by University of Barcelona

Citation: First clinical guideline on Schaaf-Yang syndrome for professionals and families (2022, October 26) retrieved 23 June 2024 from <https://medicalxpress.com/news/2022-10-clinical-guideline-schaaf-yang-syndrome-professionals.html>

This document is subject to copyright. Apart from any fair dealing for the purpose of private study or research, no part may be reproduced without the written permission. The content is provided for information purposes only.