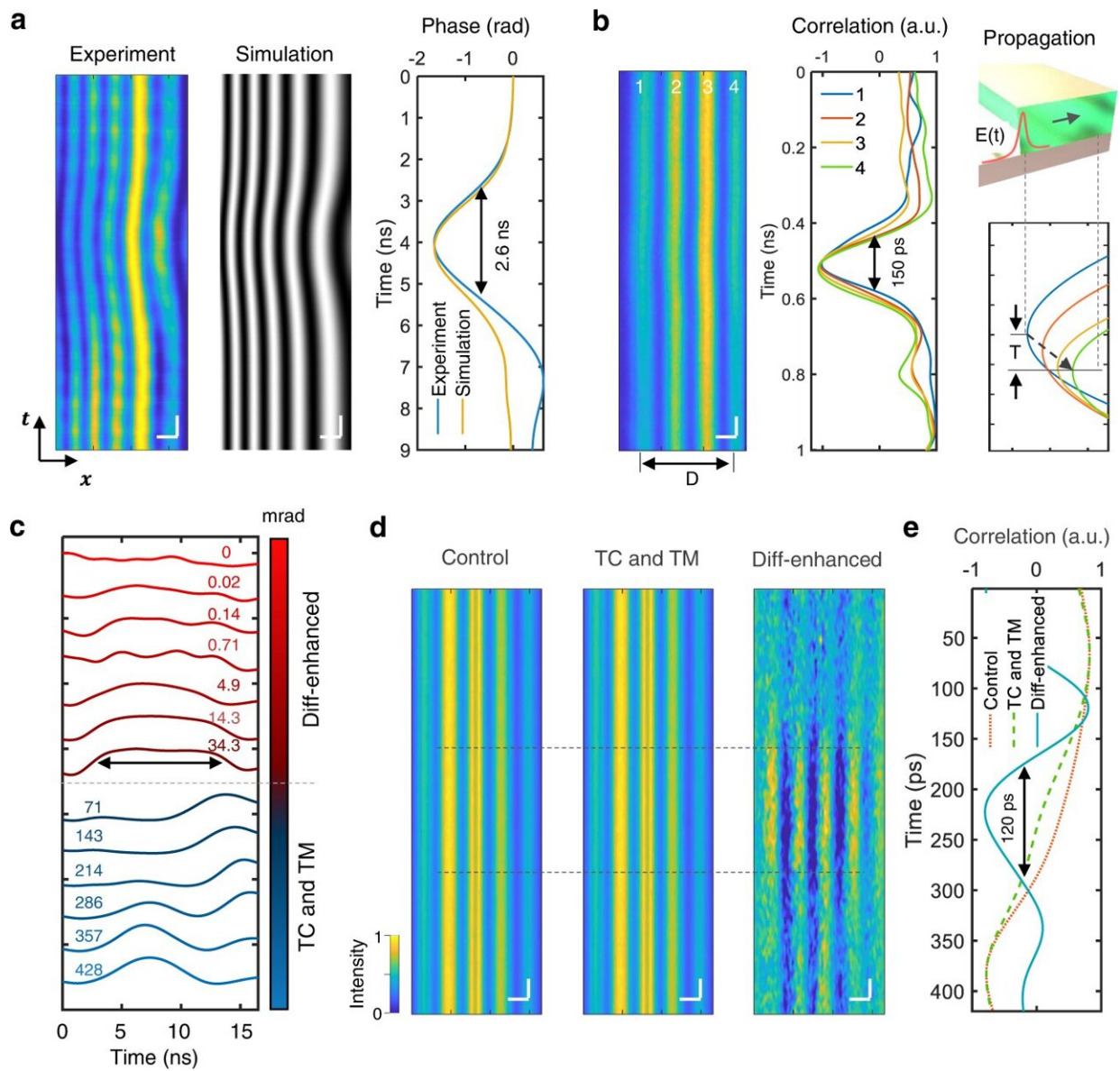


High-speed camera captures signals traveling through nerve cells

October 7 2022, by Emily Velasco



Phase sensitivity of Diff-CUP. a Spatiotemporal interferograms of a 2.6-ns EMP

in the LN crystal captured by the streak camera and simulated by the electric field and phase distribution model, and the corresponding temporal phase averaging over the x direction. Horizontal scale bars, 300 μm . Vertical scale bars, 500 ps. b Experimental interferogram of a 150-ps propagating EMP and the corresponding temporal correlation of Fringes 1–4. D is the spatial distance between Fringes 1 and 4. The inset at the bottom right shows the approach to calculate the propagation time, T, of the EMP through the LN (top right). Horizontal scale bar, 300 μm . Vertical scale bar, 50 ps. c Quantification of phase-sensitivity of uncoded Diff-CUP by inducing EMPs with different amplitudes in the LN crystal. Each curve represents a reconstructed pulse shape with a different amplitude, where the corresponding phase change is shown above the curve. Black arrows denote the pulse width of the EMP. d Spatiotemporal interferograms of a weak EMP propagating in the LN crystal. Left, unprocessed interferogram, i.e., control group. Middle, interferogram processed with the temporal correlation (TC) and template matching (TM) methods. Right, interferogram processed with the TC, TM, and differential approach. Black dashed lines denote the regions of the EMP. Horizontal scale bars, 300 μm . Vertical scale bars, 20 ps. e Reconstruction of the pulse shape of the weak EMP using the three interferograms in (d). Credit: *Nature Communications* (2022). DOI: 10.1038/s41467-022-33002-8

Reach out right now and touch anything around you. Whether it was a key on your keyboard, the wood of your desk, or the fur of your dog, you felt it the instant your finger contacted it. Or did you?

In actuality, it does take a bit of time for your brain to register the sensation from your fingertip, but it does still happen pretty darn fast, with the touch signal traveling through your nerves at over 100 miles per hour. Some nerve signals are even faster, approaching speeds of 300 miles per hour.

Now, scientists at Caltech have developed a new ultrafast camera that can record footage of these impulses as they travel through [nerve cells](#).

The camera can also capture video of other ultrafast phenomena, like the propagation of electromagnetic pulses in electronics.

The camera technology, known as differentially enhanced compressed ultrafast photography (Diff-CUP), was developed in the lab of Lihong Wang, Bren Professor of Medical Engineering and Electrical Engineering, Andrew and Peggy Cherng Medical Engineering Leadership Chair, and executive officer for medical engineering.

Diff-CUP operates similarly to Wang's other CUP systems, which have been shown capable of recording video at 70 trillion frames per second and capturing images of laser pulses as they travel at the [speed of light](#).

Diff-CUP takes the same high-speed [camera technology](#) found in the other CUP systems and combines it with a device called a Mach–Zehnder interferometer. The interferometer images objects and materials by first splitting a beam of laser light in two, passing only one of the split beams through an object, and then recombining the beams.

Because [light waves](#) are affected by the objects they pass through, with different materials affecting them in varying ways, the beam passing through the material being imaged will have its waves set out of sync with the waves of the other beam. When the beams are recombined, the out-of-sync waves interfere with each other (hence "interferometer") in patterns that reveal information about the object being imaged.

Though you cannot see an electrical [pulse](#) traveling through a nerve cell with your own eyes, or even a conventional light microscope, this type of interferometry can detect it. (Incidentally, this same basic technique is used by LIGO to detect [gravitational waves](#).) So, the Mach–Zehnder interferometer allows the imaging of these pulses, and the CUP camera captures the images at incredibly high frame rates.

"Seeing [nerve signals](#) is fundamental to our [scientific understanding](#) but has not yet been achieved owing to the lack of speed and sensitivity provided by existing imaging methods," Wang says.

Wang's research team also captured photos of the propagation of electromagnetic pulses (EMP), which, in some materials, can travel at nearly the speed of light. In this case, they passed the electromagnetic pulses through a crystal of lithium niobate, a salt that has unique optical and electrical properties. Despite the extremely high speed at which an EMP passes through this material, the camera was able to clearly image it.

"Imaging propagating signals in [peripheral nerves](#) is the first step," Wang says. "It'd be important to image live traffic in a central nervous system, which would shed light on how the brain works."

The paper describing their findings, titled "Ultrafast and hypersensitive phase imaging of propagating internodal current flows in myelinated axons and electromagnetic pulses in dielectrics," appeared in the journal *Nature Communications* on September 6.

More information: Yide Zhang et al, Ultrafast and hypersensitive phase imaging of propagating internodal current flows in myelinated axons and electromagnetic pulses in dielectrics, *Nature Communications* (2022). [DOI: 10.1038/s41467-022-33002-8](https://doi.org/10.1038/s41467-022-33002-8)

Provided by California Institute of Technology

Citation: High-speed camera captures signals traveling through nerve cells (2022, October 7) retrieved 18 May 2024 from <https://medicalxpress.com/news/2022-10-high-speed-camera-captures-nerve-cells.html>

This document is subject to copyright. Apart from any fair dealing for the purpose of private study or research, no part may be reproduced without the written permission. The content is provided for information purposes only.