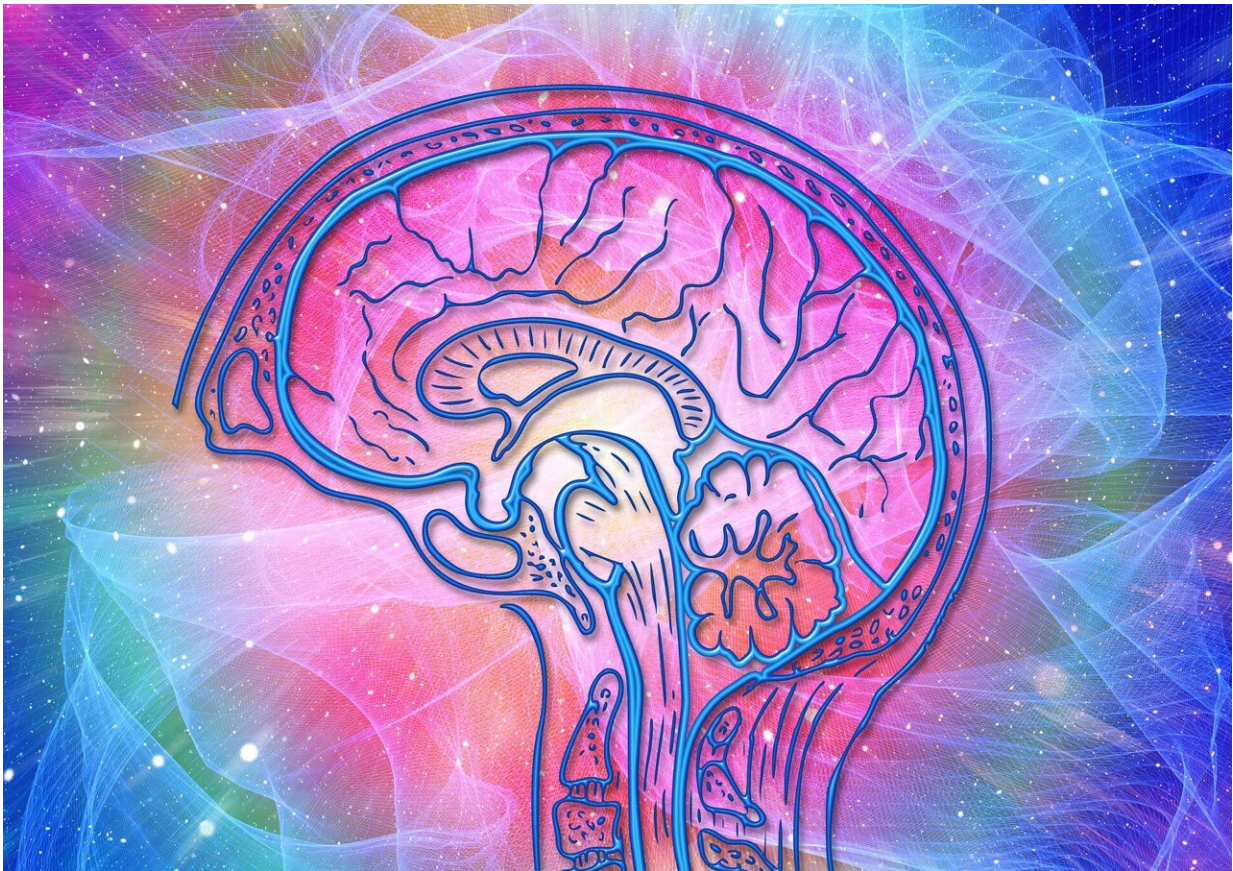


# New research paves way for innovative theory of cognitive processing

October 19 2022

---



Credit: Pixabay/CC0 Public Domain

A team of scientists from the Krembil Brain Institute, part of the University Health Network in Toronto, and Duke University in Durham,

North Carolina, has developed the first computer model predicting the role of cortical glial cells in cognition.

The paper was published today in *Proceedings of the National Academy of Sciences (PNAS)*.

"The role of neurons is well documented, but neurons are interspersed with glial cells and many synapses in the [brain](#) have glia nearby," says Dr. Maurizio De Pittà, a scientist at the Krembil Brain Institute and the first author of the study. "We currently do not understand how neurons and glia work together, or how glial dysfunction contributes to cognitive deficits."

Glial cells are abundant throughout the brain and play several important roles. These cells have long been thought to be passive bystanders—physically supporting neurons and synapses, bringing nutrients to neurons, and removing toxins and waste products. However, scientists have recently discovered that glia interact with neurons in a fashion similar to the way that neurons communicate with one another through chemical signals.

This paper presents the first theory of the role glia play in cognitive processing, in the brain. "The type of glial cells that we study—known as astrocytes—can modify the activity of our brain circuits and influence the way we behave," says Dr. De Pittà.

The study looked at the role of astrocytes in working memory, which is the ability to store information for ongoing tasks, such as following the storyline of a movie or counting to ten.

"We know that astrocytes release specialized chemical signals and we have shown that this signaling could mediate different readouts of working memory," says Dr. De Pittà. "Revealing that [chemical](#)

[interactions](#) between neurons and astrocytes could be at the core of working memory, also tells us what could go wrong when we have working memory deficits, which are often warning signs of major brain disorders."

He adds that "if we want to truly understand dysfunction in working memory, we need to consider the interaction between [glial cells](#) and neurons."

Also noted in the article:

- Like radio systems, synapses have been traditionally thought to transmit on a single frequency band. Taking astrocytes into account, we now know there can be multiple frequency bands.
- It is generally believed that different forms of working memory rely on a variety of circuits; however, this study shows that the same neuron-glia circuits could encode for various forms of working memory.
- The way that astrocytes are arranged with respect to neurons could control our working memory capacity, or how many things we can keep in mind simultaneously.

Currently, there are no effective techniques to record glial activity in the human brain. The researchers hope to eventually create a high-fidelity model—a "digital twin"—of the brain's neuron-glia circuits, from genes to cells. Such a model can help to uncover markers of neuron-glia interactions and improve the diagnosis and treatment of various brain diseases, such as Alzheimer's, Parkinson's and epilepsy.

"With our new theory, we are not just looking at the brain in black and white—that is, whether given neuron populations are active or inactive. Rather, we are viewing the brain in technicolor, gaining a deeper understanding of cellular communication by including glia and their

signaling," says Dr. De Pittà. "This gives us a much more comprehensive and realistic picture of the complexity of the brain."

As technology advances, De Pittà and his team at the Krembil will use their models to develop techniques to modify neuron-glia circuit activity to treat disease. "Our ultimate goal is to study neuron-glia interactions to uncover new therapeutic targets for brain disorders."

**More information:** Maurizio De Pittà et al, Multiple forms of working memory emerge from synapse–astrocyte interactions in a neuron–glia network model, *Proceedings of the National Academy of Sciences* (2022). [DOI: 10.1073/pnas.2207912119](https://doi.org/10.1073/pnas.2207912119)

GitHub link for code to reproduce the models in this work:  
[github.com/depitta-lab/eig-classes-pnas-2022](https://github.com/depitta-lab/eig-classes-pnas-2022)

Provided by University Health Network

Citation: New research paves way for innovative theory of cognitive processing (2022, October 19) retrieved 14 May 2024 from <https://medicalxpress.com/news/2022-10-paves-theory-cognitive.html>

<p>This document is subject to copyright. Apart from any fair dealing for the purpose of private study or research, no part may be reproduced without the written permission. The content is provided for information purposes only.</p>
------------------------------------------------------------------------------------------------------------------------------------------------------------------------------------------------------------------------------------------