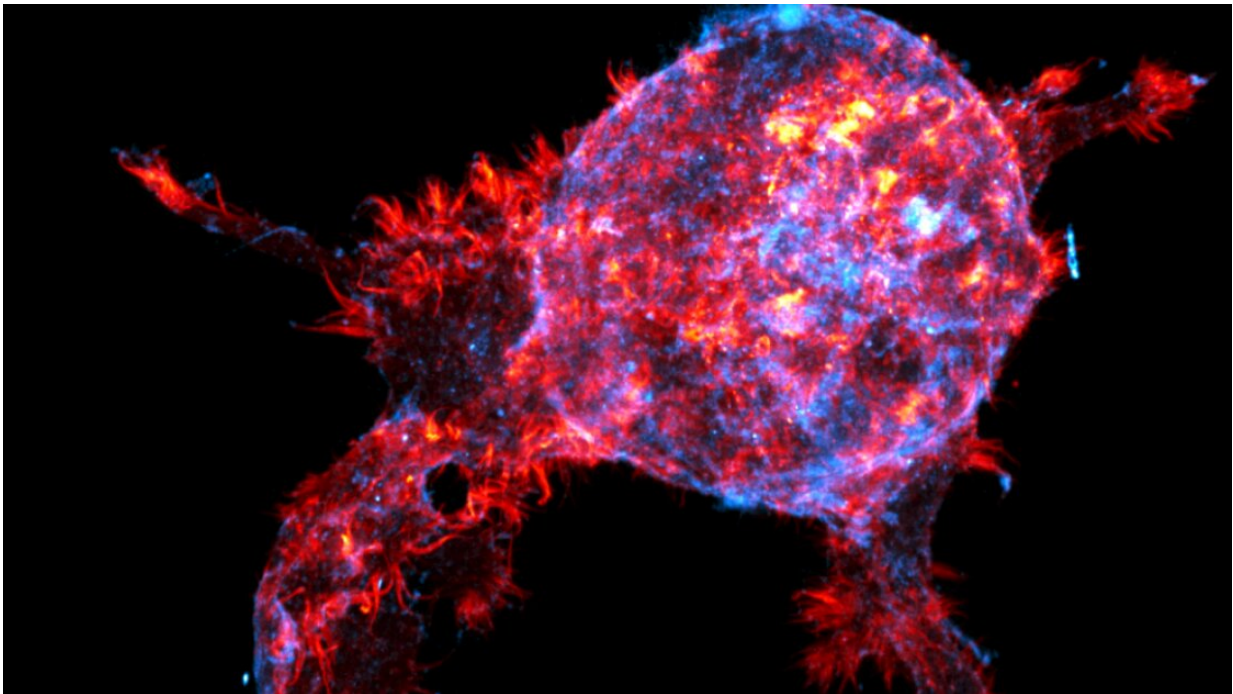


Sticky cell fingers help keep breast tumors contained

October 25 2022



Breast cancer cells break through the basement membrane acting as a biological barrier. In the image, the finger-like projections formed by the actin of cancer cells invading the surrounding cell medium are coloured red and the basement membrane protein is coloured blue. Credit: Aleksi Isomursu, Turku Bioscience.

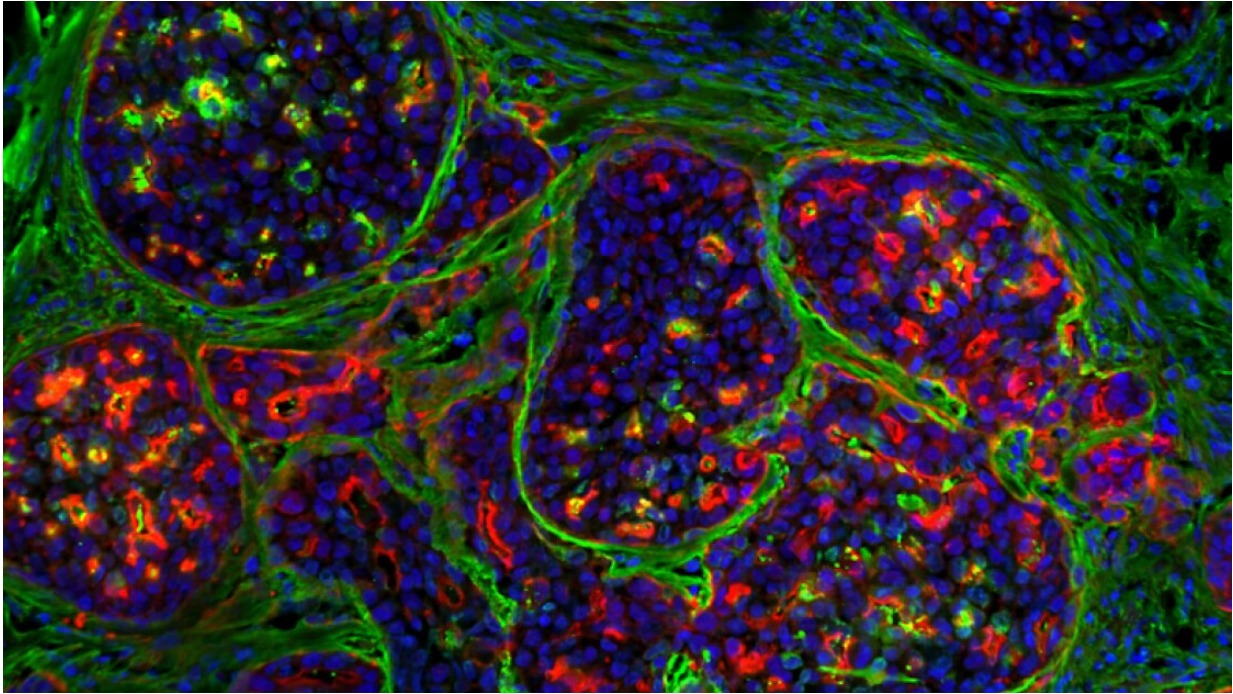
Researchers at Turku University and Åbo Akademi University, Finland, have identified that finger-like cellular extensions called filopodia contribute to building a barrier surrounding breast tumors.

At the early stage of breast cancer [malignant cells](#) are imprisoned by a tissue barrier called a [basement membrane](#) that stops them from disseminating into other parts of the body. This early disease stage is typically not life-threatening, as surgery can remove the tumor. However, [breast cancer](#) can become lethal if it spreads and forms metastases.

To escape and spread, tumor cells first need to break through their most proximal barrier, the basement membrane. Researchers at University of Turku and Åbo Akademi University have discovered that [cellular structures](#) called filopodia help preserve the basement membrane surrounding the tumor, blocking their escape.

"These results are very surprising as we previously thought that these [cancer cells](#)' sticky fingers were only used to invade nearby tissues. Now we find that these structures can also help contain the tumor," says InFLAMES group leader Professor Johanna Ivaska, University of Turku.

These sticky fingers are generated by a protein called Myosin-10. The research teams led by Professor Ivaska, Docent at the Institute of Biomedicine at the University of Turku Dr. Emilia Peuhu, and InFLAMES group leader, Associate Professor of Cell Biology Dr. Guillaume Jacquemet from Åbo Akademi University, found that cancer cells lacking Myosin-10 cannot build and maintain their surrounding barrier, the basement membrane. This makes it easier for cancer cells to escape.



Early-stage breast cancer tumours are separated from their environment by a basement membrane that acts as a biological barrier. In the picture, localised cancer tumours (nuclei blue and cells partly red) are surrounded by the basement membrane (green). Credit: Guillaume Jacquemet, Åbo Akademi

"Remove Myosin-10, and the tumors are clearly more aggressive. Their basement [membrane](#) is almost completely gone and they spread more freely to the surrounding tissue," says Dr. Peuhu.

For several years, the Ivaska and Jacquemet teams have focused their efforts on understanding how cancer cells use filopodia to move and invade surrounding tissue. Their previous findings highlight that filopodia are used by cancer cells to disseminate once they escape the primary tumor. Now, in their study published in *Developmental Cell*, the teams found that filopodia have an opposite role at the early stage of the disease.

"We've been looking into developing anti-filopodia strategies to treat cancers, but our new results clearly emphasize that targeting filopodia or Myosin-10 too early could actually make things worse," says Dr. Jacquemet.

The teams and their collaborators are now assessing how filopodia regulate basement membranes' assembly.

More information: Emilia Peuhu et al, MYO10-filopodia support basement membranes at pre-invasive tumor boundaries, *Developmental Cell* (2022). [DOI: 10.1016/j.devcel.2022.09.016](https://doi.org/10.1016/j.devcel.2022.09.016)

Provided by University of Turku

Citation: Sticky cell fingers help keep breast tumors contained (2022, October 25) retrieved 11 May 2024 from <https://medicalxpress.com/news/2022-10-sticky-cell-fingers-breast-tumors.html>

<p>This document is subject to copyright. Apart from any fair dealing for the purpose of private study or research, no part may be reproduced without the written permission. The content is provided for information purposes only.</p>
--