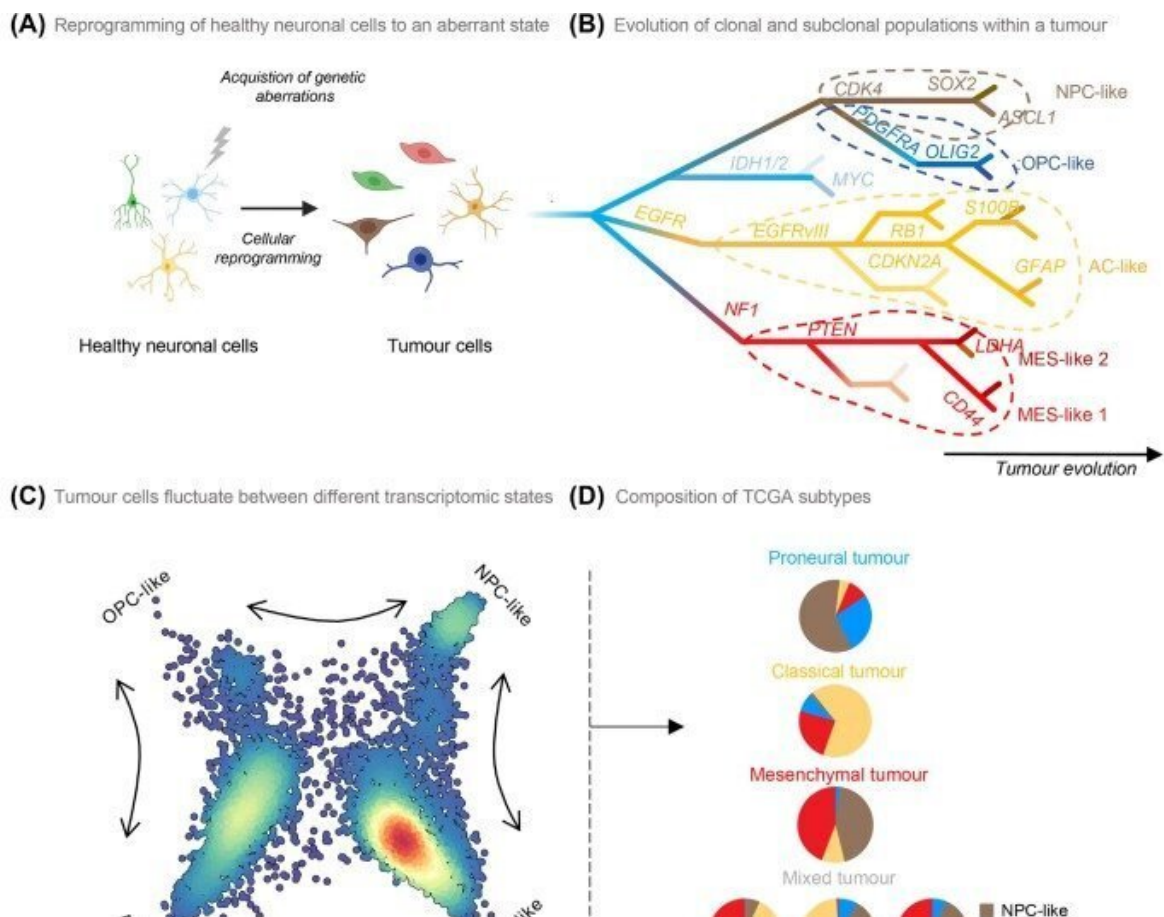


Hunting brain cancer cells: Neuronal and tumorigenic boundaries of glioblastoma plasticity

November 29 2022



Glioblastoma tumor cells express aberrant neuronal signatures and differentiate along a neurodevelopmental trajectory. (A) Healthy neuronal cells transform to a malignant phenotype following mutations in genetic drivers. (B) A single tumor consists of heterogeneous clonal populations defined by unique genetic drivers. As clonal populations expand, they gain stochastic mutations and generate

subclonal populations with varying levels of fitness. (C) Tumor cells mirror the transcriptomic signature of oligodendrocyte precursors (OPC-like), neural progenitors (NPC-like), astrocytes (AC-like), and mesenchymal cells (MES-like). Populations of NPC-, AC-, OPC-, and MES-like cells exist in dynamic equilibrium and fluctuate between each of the four transcriptomic states. (D) The proneural, classical, and mesenchymal subtypes of tumors are composed of NPC-, AC-, OPC-, and MES-like cells in different proportions. The overall subtype is defined by the dominant population within the tumor. Mixed tumors consist of equal proportions of two or more populations. (E) Glioblastoma (GBM) cells exist in a spectrum of phenotypic states from quiescent to proliferative and multipotent to differentiated. The differentiation pathways of GBM parallel (F) typical neurodevelopment where multipotent, neural stem cells or glial progenitors differentiate into neurons or astrocytes and oligodendrocytes. Credit: *Trends in Cancer* (2022). DOI: 10.1016/j.trecan.2022.10.010

Understanding how cancer cells evolve from healthy brain cells and evade treatment could open up potential new drug therapies for glioblastomas, one of the most common and lethal brain cancers, new research has revealed.

By bringing together neuroscience and oncology, the team from Flinders University and the South Australian Health and Medical Research Institute (SAHMRI) is hopeful of finding a new method to treat the deadly disease.

"Glioblastomas can affect anyone and only 5% of patients survive more than 5 years following their diagnosis," says study senior author Associate Professor Cedric Bardy from Flinders University and Group Leader of SAHMRI's Laboratory for Human Neurophysiology and Genetics.

"A major therapeutic challenge is the variability and adaptability of

these [brain](#) tumor cells. From patient to patient, glioblastoma tumors are composed of several types of cells in varying proportions. It's these variations and their incredible capacity to quickly change their identity to hide and escape treatments that make them challenging to eradicate."

"However, recent advances in genetics have shown that the [cell types](#) found within glioblastomas maintain some resemblance to the cells of origin, before they became cancerous, and use molecular pathways common with [brain cells](#) for growth and survival or when changing their identity."

In a new study, published in *Trends in Cancer*, the team explore these similarities and differences in a bid to shed light on the potential pathways used by tumor cells to escape treatment.

"What our research suggests is that we may learn from the genetics of healthy brain cells in order to target vulnerabilities in glioblastoma cancer cells," says study lead author Inushi De Silva, a Ph.D. student with Flinders University and SAHMRI.

"Brain cells are not as good as cancer cells in being able to quickly change their identity in response to [environmental changes](#), so if we manage to exploit and amplify this hidden inherited genetic weakness in [cancer](#) cells, we might be able to reverse their ability to escape treatments."

The authors say despite [cancer cells](#) having an immense ability to change and hide, the research shows they still evolve along known brain pathways.

"We should be able to use this in targeted therapy, with treatments that restrict glioblastoma tumor cells ability to change, known as plasticity. Understanding more about these mechanisms will be helpful to develop

new treatments in the future," says Associate Professor Bardy.

"Glioblastoma cells are tough to kill because they are such a fast-moving target. This review helps us understand the different pathways in which they can hide. If we can block them in a corner, we may have a better chance to hit the target and cure this terrible disease."

"It is likely that effective therapies will be personalized and combine multiple agents, however knowing about the dynamic profile of [glioblastoma](#) cells, it seems essential to identify ways to block these identity shifts from occurring in the first place." The team is now currently testing potential treatments targeting subtypes of tumor cells that invade the human brain circuitry and are difficult to remove surgically, without harming the patient.

More information: Manam Inushi De Silva et al, Neuronal and tumorigenic boundaries of glioblastoma plasticity, *Trends in Cancer* (2022). [DOI: 10.1016/j.trecan.2022.10.010](https://doi.org/10.1016/j.trecan.2022.10.010)

Provided by Flinders University

Citation: Hunting brain cancer cells: Neuronal and tumorigenic boundaries of glioblastoma plasticity (2022, November 29) retrieved 27 April 2024 from <https://medicalxpress.com/news/2022-11-brain-cancer-cells-neuronal-tumorigenic.html>

<p>This document is subject to copyright. Apart from any fair dealing for the purpose of private study or research, no part may be reproduced without the written permission. The content is provided for information purposes only.</p>
--