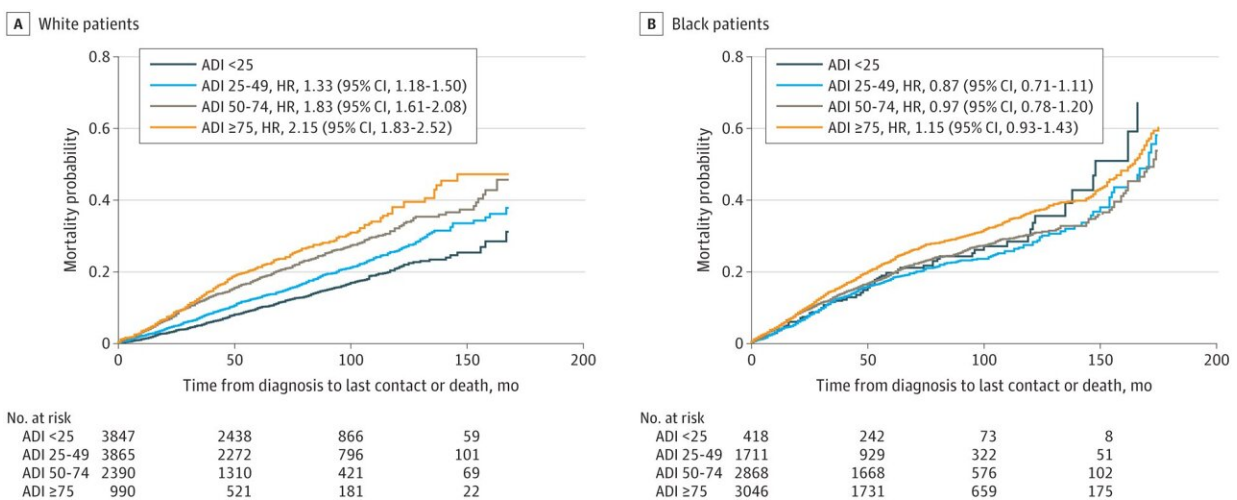


# Breast cancer mortality reflected differently in certain Georgia neighborhoods, study reveals

November 8 2022, by Adam Pope



Associations Between Area Deprivation Index (ADI) and Probability of Patient Mortality for Black and White Patients With Breast Cancer. Data are shown as Kaplan-Meier curves. The lowest ADI quartile (

Citation: Breast cancer mortality reflected differently in certain Georgia neighborhoods, study reveals (2022, November 8) retrieved 24 April 2024 from

<https://medicalxpress.com/news/2022-11-breast-cancer-mortality-differently-georgia.html>

This document is subject to copyright. Apart from any fair dealing for the purpose of private study or research, no part may be reproduced without the written permission. The content is provided for information purposes only.