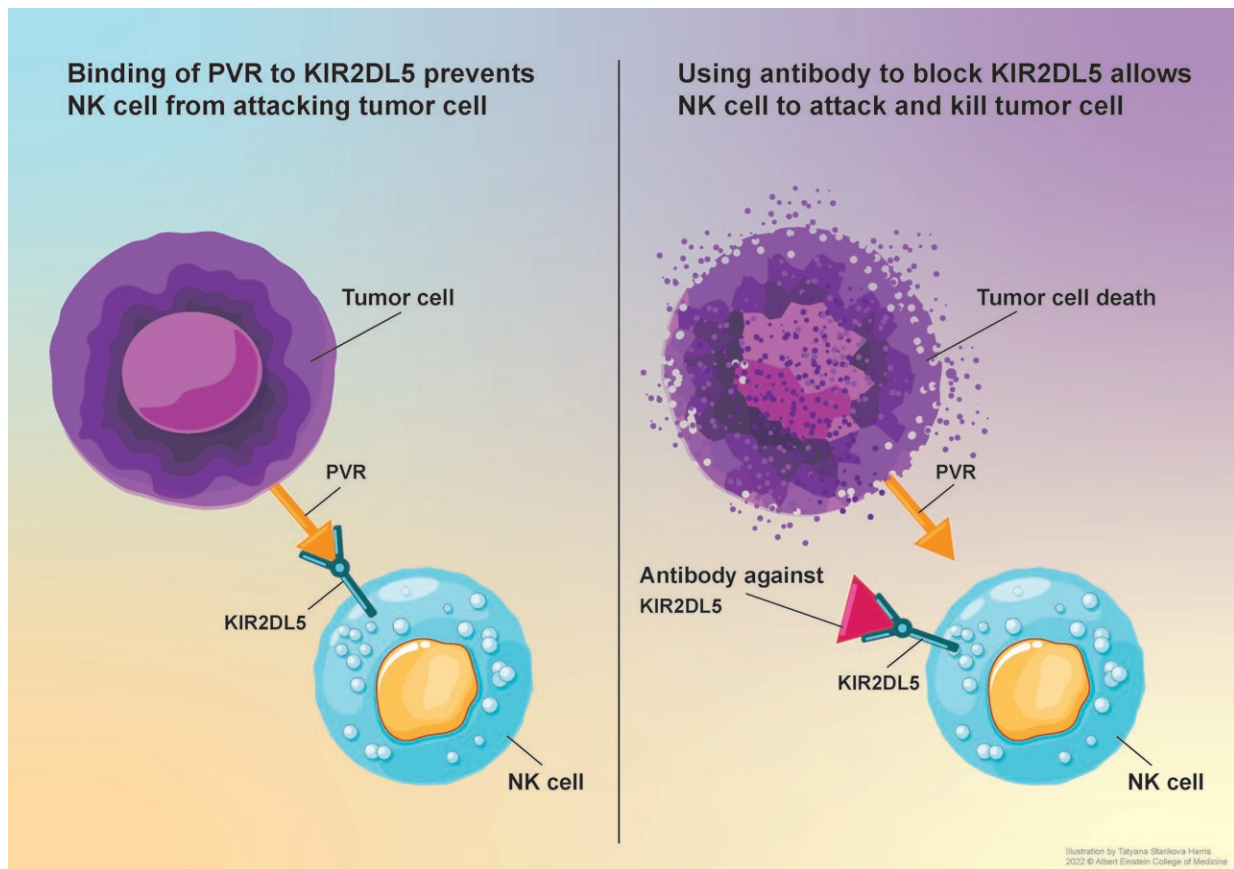


Developing a promising new cancer therapy based on natural killer cells

November 15 2022



Left shows the tumor-cell protein PVR binding with the NK-cell receptor KIR2DL5 to prevent NK-cell attack. Right, monoclonal antibody short-circuits tumor cell/NK cell interaction, allowing the NK cell to attack and destroy the tumor cell. Credit: Tatyana Harris/Albert Einstein College of Medicine

Immune checkpoint inhibitors such as Keytruda and Opdivo work by unleashing the immune system's T cells to attack tumor cells. Their introduction a decade ago marked a major advance in cancer therapy, but only 10% to 30% of treated patients experience long-term improvement. In a paper published today in the *Journal of Clinical Investigation (JCI)*, scientists at Albert Einstein College of Medicine describe findings that could bolster the effectiveness of immune-checkpoint therapy.

Rather than rally T cells against cancer, the Einstein research team used different human [immune cells](#) known as natural killer (NK) cells—with dramatic results.

"We believe the novel immunotherapy we've developed has great potential to move into [clinical trials](#) involving various types of cancer," said study leader Xingxing Zang, M.Med., Ph.D., the Louis Goldstein Swan Chair in Cancer Research and professor of microbiology & immunology, of oncology, of urology, and of medicine at Einstein and a member of the Cancer Therapeutics Program of the Montefiore Einstein Cancer Center.

Telling friend from foe

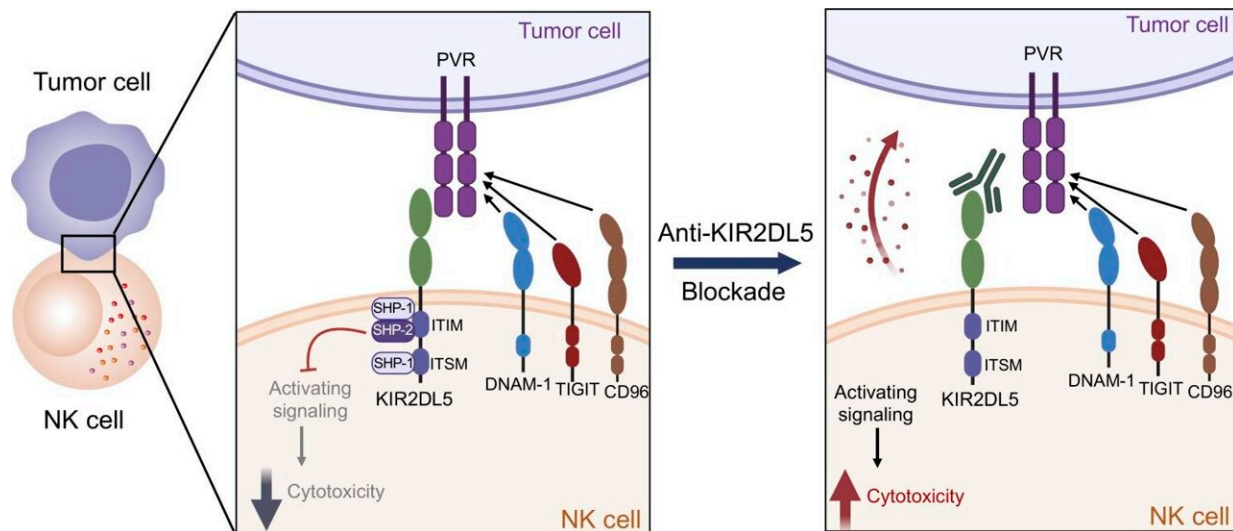
The surfaces of immune cells are studded with receptors known as "checkpoint" proteins, which prevent immune cells from straying beyond their usual targets (pathogen-infected cells and [cancer cells](#)). When checkpoint receptors on immune cells bind with proteins expressed by the body's own normal cells, the interaction puts the brakes on a possible immune-cell attack. Diabolically, most types of cancer cells express proteins that bind with [checkpoint proteins](#), tricking immune cells into standing down and not attacking the tumor.

Immune checkpoint inhibitors are monoclonal antibodies designed to

short-circuit immune-cell/cancer-cell interactions by blocking either the tumor proteins or the immune-cell receptors that bind with tumor proteins. With no brakes to impede them, immune cells can attack and destroy cancer cells.

New focus on natural killer cells

The limited effectiveness of checkpoint inhibitors prompted Dr. Zang and other scientists to look at checkpoint pathways involving NK cells, which—like T cells—play major roles in eliminating unwanted cells. A cancer-cell protein called PVR soon captured their attention. "We realized that PVR may be a very important protein that human cancers use to hobble the immune system's attack," said Dr. Zang.



Graphical abstract. Credit: *Journal of Clinical Investigation* (2022). DOI: 10.1172/JCI163620

PVR protein is usually absent or very scarce in normal tissues but is

found in abundance in many types of tumors including colorectal, ovarian, lung, esophageal, head and neck, stomach, and pancreatic cancer as well as myeloid leukemia and melanoma.

Moreover, PVRs appeared to inhibit T cell and NK cell activity by binding to a checkpoint protein called TIGIT—prompting efforts to interrupt the TIGIT/PVR pathway by using [monoclonal antibodies](#) made against TIGIT. More than 100 clinical trials targeting TIGIT are now in progress worldwide. However, several [clinical studies](#) including two large phase 3 clinical trials have recently failed to improve cancer outcomes.

Recognizing the role of a new receptor

Meanwhile, the cancer-cell protein PVR was found to have another "binding partner" on NK cells: KIR2DL5. "We hypothesized that PVR suppresses NK cell activity not by binding with TIGIT but by binding with the recently recognized KIR2DL5," said Dr. Zang. To find out, he and his colleagues synthesized a monoclonal antibody targeting KIR2DL5 and carried out in vitro and in vivo experiments using the antibody.

In their *JCI* paper, Dr. Zang and colleagues demonstrated that KIR2DL5 is a commonly occurring checkpoint receptor on the surface of human NK cells, which PVR cancer proteins use to suppress immune attack.

In studies involving humanized animal models of several types of human cancers, the researchers showed that their monoclonal antibody against KIR2DL5—by blocking the KIR2DL5/PVR pathway—allowed NK cells to vigorously attack and shrink human tumors and prolong animal survival (see accompanying illustration). "These preclinical findings raise our hopes that targeting the KIR2DL5/PVR pathway was a good idea and that the monoclonal antibody we've developed may be an

effective immunotherapy," said Dr. Zang.

Einstein has filed a [patent application](#) for KIR2DL5/PVR immune checkpoint including antibody drugs and is interested in a partnership to further develop and commercialize the technology. Dr. Zang has previously developed and patented more than 10 immune checkpoint inhibitors.

One of those inhibitors is now being tested in China in phase 2 clinical trials involving several hundred patients with advanced solid cancers (non-small cell lung cancer, small cell lung cancer, nasopharyngeal cancer, head and neck cancer, melanoma, lymphoma) or recurrent/refractory blood cancers (acute myeloid leukemia, myelodysplastic syndromes). Another of Dr. Zang's [immune checkpoint inhibitors](#) will be evaluated starting next year in cancer clinical trials in the United States.

More information: Xiaoxin Ren et al, Blockade of the immunosuppressive KIR2DL5/PVR pathway elicits potent human NK cell-mediated antitumor immunity, *Journal of Clinical Investigation* (2022). [DOI: 10.1172/JCI163620](https://doi.org/10.1172/JCI163620)

Provided by Albert Einstein College of Medicine

Citation: Developing a promising new cancer therapy based on natural killer cells (2022, November 15) retrieved 26 April 2024 from <https://medicalxpress.com/news/2022-11-cancer-therapy-based-natural-killer.html>

<p>This document is subject to copyright. Apart from any fair dealing for the purpose of private study or research, no part may be reproduced without the written permission. The content is provided for information purposes only.</p>
--