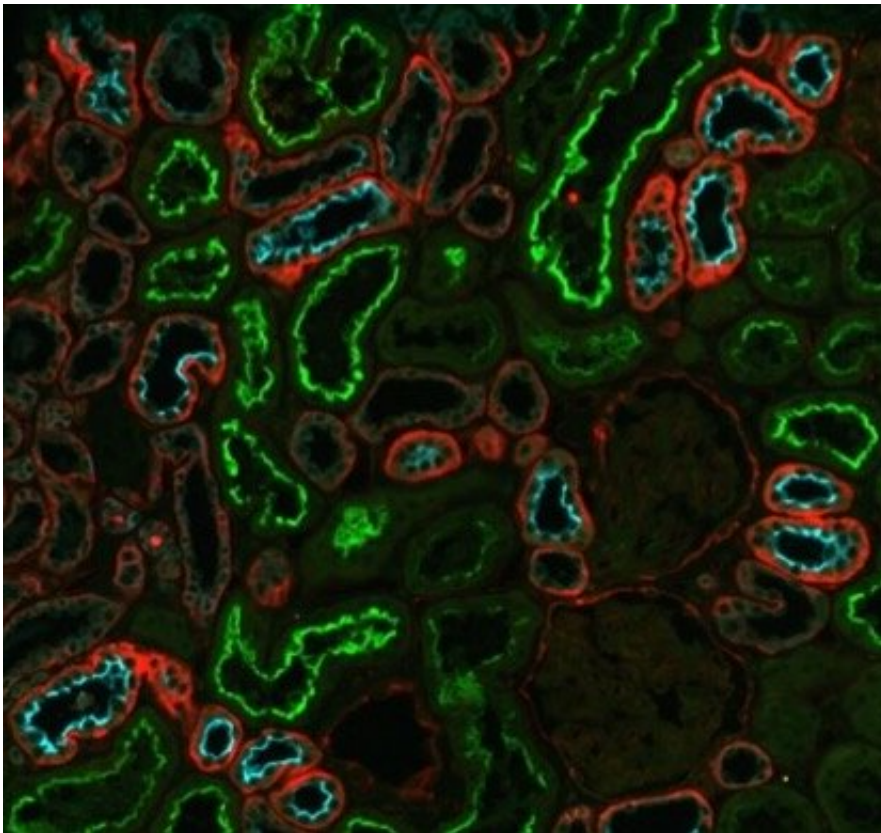


Early diagnosis tool for childhood kidney disease

November 8 2022



Location of three biomarkers (MGAM, MUC1, CD9) in kidney tissue shown as green, blue or red by tissue staining. These biomarkers are situated in different cellular compartments in different segments of the nephron. Credit: 2022 Takizawa et al.

Early diagnosis of chronic kidney disease (CKD) is key to managing

progression of the disease. A new technique analyzing urine extracellular vesicles (uEVs)—cell-derived nanoscale spherical structures involved in multiple biological functions—in urine samples identifies changes in the kidneys earlier than conventional methods and can also predict renal function decline.

A team at the University of Tokyo studied urine samples from children with and without CKD. They found that the size and content of uEVs change with decreasing kidney function. This proof of concept could help with developing new urine tests that can catch the disease earlier, as well as the development of similar tests for other diseases.

Kidneys are our body's essential filtration system. These bean-shaped, fist-sized organs are made up of millions of tiny filtration units called nephrons working hard to keep our blood clear of waste. Unfortunately, 9% of the [global population](#) is affected by [chronic kidney disease](#) (CKD) and the number of cases is on the rise.

CKD develops when nephrons are damaged, whether through lifestyle, inherited and congenital diseases, or injury. Many people will not experience [severe symptoms](#), and therefore not seek help, until the condition is more advanced. As it is difficult to completely regenerate damaged nephrons, the earlier the diagnosis the better the possible outcome.

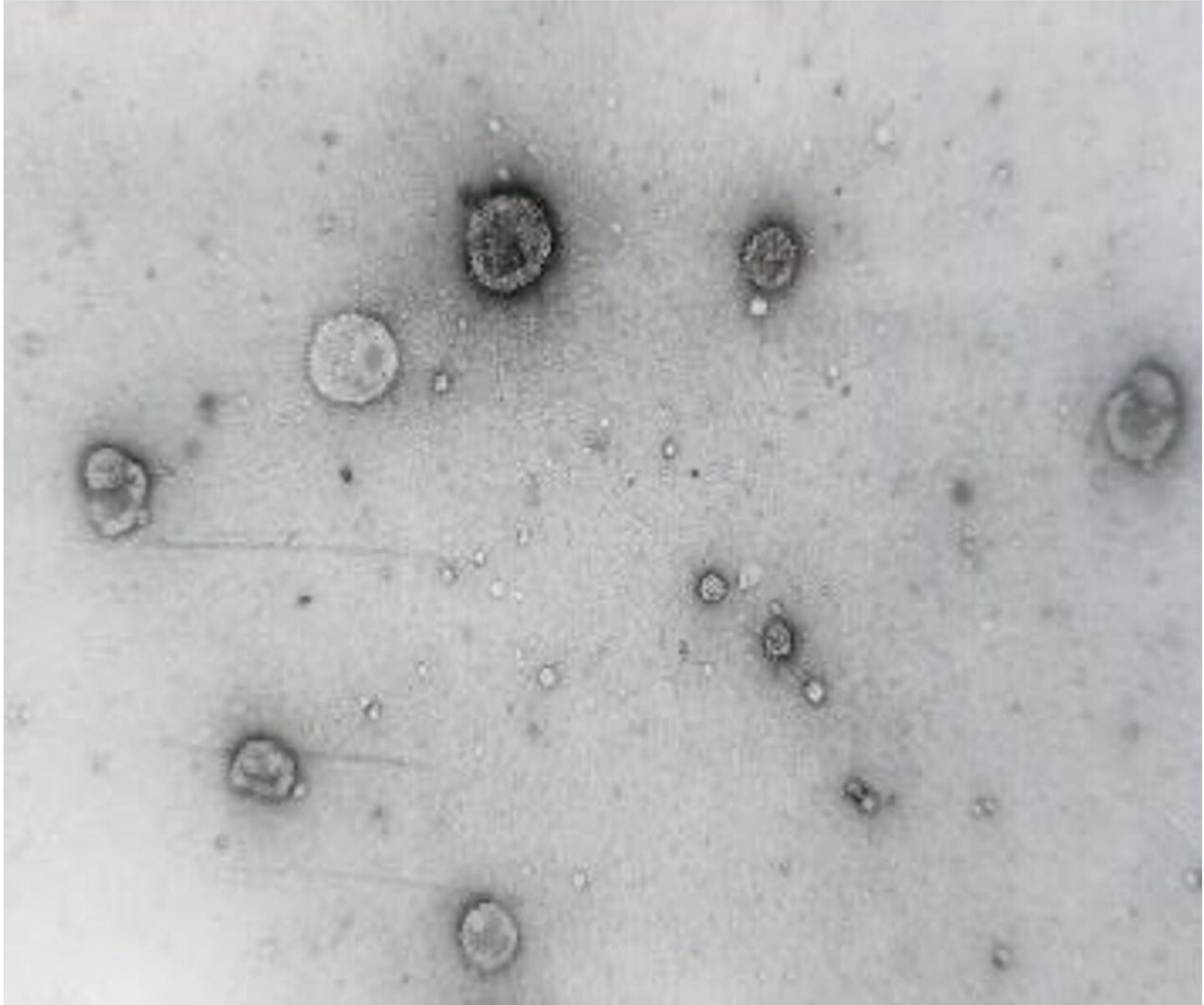
A urine or [blood test](#) can typically tell doctors if a patient has [kidney damage](#). However, these tests can still miss the very early stages of nephron loss which signal the start of CKD. Researchers at the University of Tokyo wanted to find out if there might be other early markers of kidney disease, especially to aid identification in [young children](#).

"We found that changes in tiny structures called [extracellular vesicles](#) in

urine are valuable in the diagnosis of kidney disease," explained Associate Professor Yutaka Harita from the Graduate School of Medicine. "The percentage of larger vesicles increased with decreased kidney function. We were also surprised to learn that we can use changes in the molecules contained in the vesicles to diagnose and predict renal function decline."

Extracellular vesicles are particles that are released from almost all types of cells in our bodies and serve a range of functions. Urinary extracellular vesicles (uEVs) contain proteins from nephrons, which means they could be used as a source of biomarkers (molecules that are signs of normal or abnormal processes) for various related diseases.

The team looked at uEVs in [urine samples](#) from 26 children with healthy kidneys and 94 children who have various types of CKD, including those born with smaller than typical kidneys, containing fewer nephrons. In children, the causes of CKD are less likely to be due to acquired factors and more likely to be due to structural abnormalities. This made it easier for the researchers to identify and unravel the changes in uEVs, which are associated with abnormal kidney structure.



These uEVs are produced by various cells found within nephrons and can mirror the molecular processes, as well as normal and abnormal conditions, in kidney tissue. Credit: 2022 Takizawa et al

"To collect extracellular vesicles in urine, we used nanoscale magnetic microbeads (made up of iron oxide particles) coated with a molecule that binds to EVs," explained Harita. "This method enabled efficient collection of uEVs even from patients with kidney disease who could only produce diluted urine. The size of the purified extracellular vesicles and the amount of protein contained in them were analyzed. We found

several unique changes in uEVs from children with CKD. For example, children with CKD had lower levels of a protein called MUC1, important for [kidney function](#), in their uEVs."

The research is published in *iScience*. These results offer proof of concept and a first step towards using uEVs for early identification of CKD and to complement existing methods. Next, Harita and the team hope to scale up the project. "We want to conduct studies on a larger scale to establish a new [urine](#) test using extracellular vesicles. We would also like to examine the utility of combining the new methods with existing tests for various diseases and age groups."

More information: Yutaka Harita, Urinary extracellular vesicles signature for diagnosis of kidney disease, *iScience* (2022). DOI: [10.1016/j.isci.2022.105416](https://doi.org/10.1016/j.isci.2022.105416). [www.cell.com/iscience/fulltext ... 2589-0042\(22\)01688-1](https://www.cell.com/iscience/fulltext/S2589-0042(22)01688-1)

Provided by University of Tokyo

Citation: Early diagnosis tool for childhood kidney disease (2022, November 8) retrieved 27 April 2024 from <https://medicalxpress.com/news/2022-11-early-diagnosis-tool-childhood-kidney.html>

<p>This document is subject to copyright. Apart from any fair dealing for the purpose of private study or research, no part may be reproduced without the written permission. The content is provided for information purposes only.</p>
--