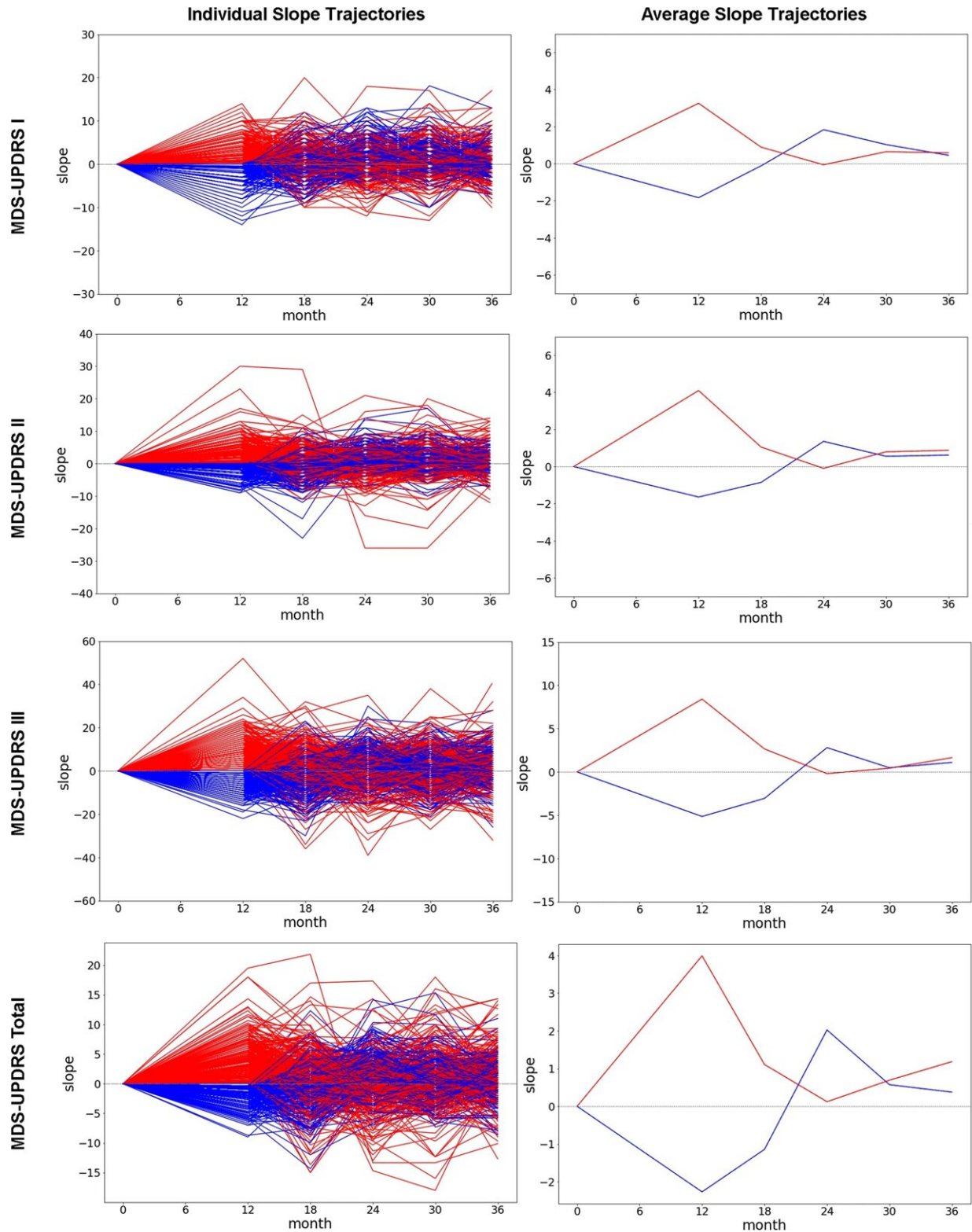


Picking the fastest progressing patients to speed Parkinson's disease clinical trials

November 10 2022



MDS-UPDRS annualized trajectories. Annualized MDS-UPDRS subpart and total slopes for the PPMI cohort. Each value corresponds to the slope of the line

connecting the each MDS-UPDRS component value with its respective value preceding it by 12 months. For example, the 18-month timepoint is the slope of the difference between 6-month and 18-month MDS-UPDRS values. Individual trajectories are plotted on the left, with average values provided on the right. Lines are color coded based upon their baseline to 12-month MDS-UPDRS Total progression status (red: progressors, blue: non-progressors). Credit: *npj Parkinson's Disease* (2022). DOI: 10.1038/s41531-022-00412-w

Testing whether a new drug impacts the progression of Parkinson's disease takes years, in part because the disease often advances so slowly. Many Parkinson's patients don't have any worsening of their symptoms over the course of a typical clinical trial, even without treatment.

Now, Scripps Research scientists have developed a tool that analyzes Parkinson's [disease](#) patients' genetic and [clinical data](#) to predict who is most likely to rapidly progress. The approach, described in *npj Parkinson's Disease*, will let clinical researchers select the most at-risk patients and design shorter, more powerful trials to assess Parkinson's drugs, they say.

"If clinicians are able to enroll in trials only those patients predicted to progress, they can get much faster results and move this field along more quickly," says senior author Ali Torkamani, Ph.D., professor and director of Genomics and Genome Informatics at the Scripps Research Translational Institute.

Parkinson's disease is a progressive disorder of the nervous system and affects about one million people in the United States. The earliest symptoms are often barely noticeable tremors, and over the course of many years the disease progresses, eventually impacting movement, posture, facial expressions, speech and eating, as well as causing pain and dementia.

However, the order and speed at which these symptoms worsen varies greatly between people. Over a single year, for instance, many patients won't get worse, making it difficult and time-consuming to study the effectiveness of drugs at slowing this progression.

Torkamani, along with Scripps Research colleagues and collaborators at Takeda—who are developing investigational Parkinson's Disease treatments—set out to better predict this short-term progression in patients considered for inclusion in [clinical studies](#) to slow down this disease.

They analyzed the progression over 12, 24 and 36 months of patients enrolled in two existing cohorts—the Parkinson's Progression Markers Initiative and the Parkinson's Disease Biomarkers Program. In all, the team used data including genetics, clinical exam information, brain scans and treatments, on 879 patients.

Overall, 529 patients were found to be "progressors" over the first 12 months of the study, with their symptoms significantly worsening, while 350 were grouped as "non-progressors." Torkamani's group used a machine learning approach to develop a model that could predict, with 77% accuracy, which group patients belonged to.

"This model worked by combining different aspects of comprehensive disease profiling," says Torkamani. "Genetic risk factors were the most powerful predictor, but other factors were important to include as well."

Some of the strongest signals, he says, included whether a patient had a mutation in LRRK2—this known risk factor for Parkinson's disease makes patients more likely to develop early onset disease, but then their symptoms progress more slowly.

For now, the model doesn't have clinical value for individual patients,

since there are no drugs that have been shown to slow the progression of Parkinson's. However, the researchers hope that being able to choose "progressors" for clinical trials makes it easier and faster to pinpoint these kinds of drugs as the field moves forward.

"Right now, these clinical trials are large and tend to take two to three years," says Torkamani. "We're hoping to empower smaller trials that are on the order of a one-year time frame."

The Scripps Research scientists also plan to expand their model to try to predict other aspects of Parkinson's. For instance, can [genetic markers](#) predict which Parkinson's patients will develop psychosis or depression? The same approach they took in the current study—integrating clinical and genetic information—could also be useful in analyzing the progression of other neurodevelopmental disorders.

More information: Hossein J. Sadaei et al, Genetically-informed prediction of short-term Parkinson's disease progression, *npj Parkinson's Disease* (2022). [DOI: 10.1038/s41531-022-00412-w](https://doi.org/10.1038/s41531-022-00412-w)

Provided by The Scripps Research Institute

Citation: Picking the fastest progressing patients to speed Parkinson's disease clinical trials (2022, November 10) retrieved 12 May 2024 from <https://medicalxpress.com/news/2022-11-fastest-patients-parkinson-disease-clinical.html>

<p>This document is subject to copyright. Apart from any fair dealing for the purpose of private study or research, no part may be reproduced without the written permission. The content is provided for information purposes only.</p>
--