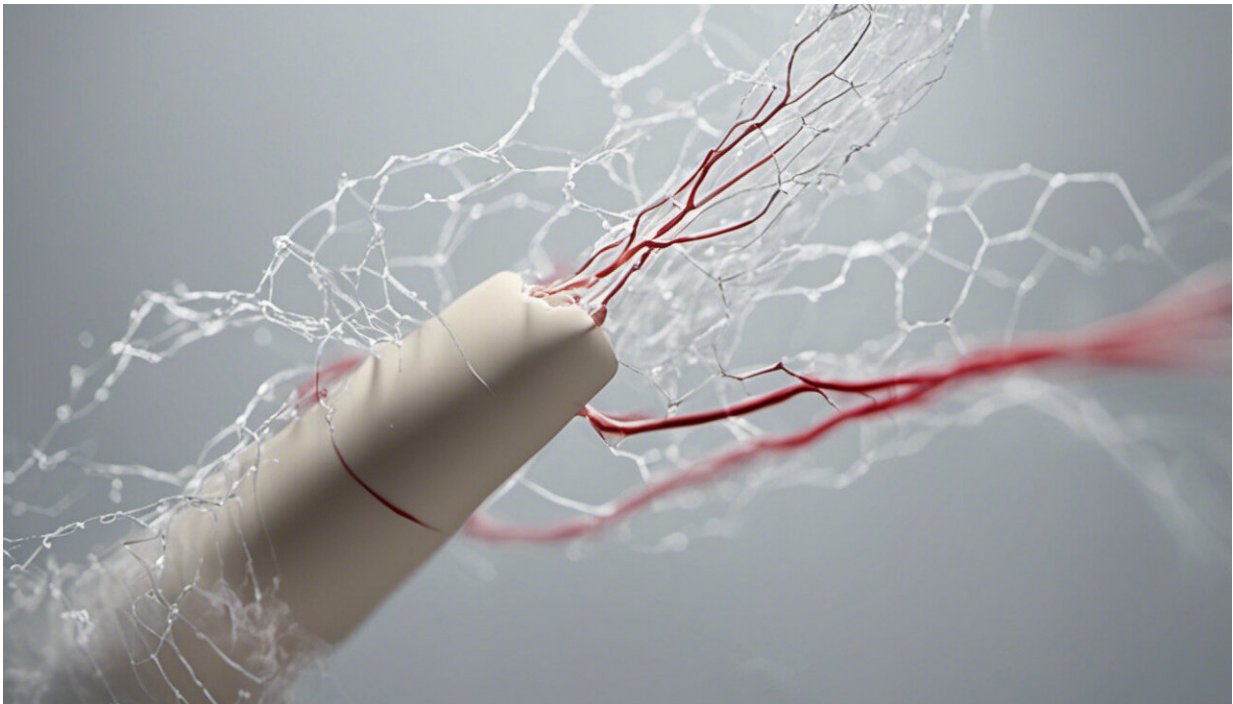


Stroke patients with delirium may struggle more during recovery

November 1 2022, by Nancy Bazilchuk



Credit: AI-generated image ([disclaimer](#))

Every year approximately 9,000 people are admitted to hospital with stroke in Norway. Some of those who have a stroke also experience a temporary state of acute confusion. This condition is called delirium and often occurs in connection with illness and medical interventions.

Now we have found that [patients](#) who experience this temporary state of confusion during stroke sometimes experience greater cognitive and emotional challenges in the time afterwards.

In Norway, about 10% of [stroke patients](#) experience delirium. Delirium is characterized by the patient suddenly appearing disoriented and inattentive, without this being due to previous dementia or known brain diseases. The patient may be easily distracted, struggle to maintain a conversational thread, and their thoughts and statements may be incoherent. The condition decreases with time, but the number of hours or days the patient experiences confusion may vary.

Even if the state of confusion is temporary, it is important to assess whether it can cause long-term problems for stroke patients.

Using multiple tests

This is exactly what our researchers at the Vascular Diseases Research Group (VaD) wanted to investigate.

We were interested in finding out whether patients who developed delirium during stroke scored worse on cognitive and psychiatric measures in the years afterwards. We have presented the results in a new article.

The group was led by Ramune Grambaite, associate professor in clinical neuropsychology and clinic manager for the Neuropsychological Outpatient Clinic at the Department of Psychology at NTNU. Vilde Nerdal shares first authorship with Elise Gjestad, doctoral candidate in psychology at NTNU's Department of Psychology. The work has been carried out under the supervision of associate professor Grambaite.

We developed a study of the long-term effects of delirium in stroke

patients with several dedicated researchers. This is a field that is poorly understood both nationally and internationally.

Patients with delirium struggled more

The analyses showed that stroke patients who experienced delirium during stroke actually had a greater chance of developing cognitive and psychiatric difficulties in the years following.

The patients who had delirium scored worse on [cognitive tests](#) after three months, 18 months and 36 months. They suffered greater cognitive impairment compared to the stroke patients who had not experienced delirium.

In addition, delirium was found to increase the likelihood of anxiety and other emotional symptoms in the years following the stroke.

After three years, the stroke patients with delirium had greater anxiety than the patients who had not experienced this state of confusion during their stroke. Questionnaires for mapping emotional difficulties also showed that patients with delirium scored higher (worse) on these measures.

Several possible reasons

It is difficult to identify one specific reason why delirium might increase the chance of cognitive and psychiatric symptoms.

It may be that the patients who experience delirium have greater vulnerabilities at the outset. However, the results were similar when we controlled for factors such as dementia, complications and other illnesses during the stroke. We might not be able to explain the symptoms solely

by previous dementia or other vulnerabilities. Another explanation could be that the state of confusion is frightening in itself and affects the rehabilitation process.

Although we do not know which specific mechanisms produce the described symptoms, it is critical to take the condition seriously. Perhaps the state of confusion can be understood as a kind of warning that the patient is experiencing major medical and [psychological stress](#) during the stroke, and our findings show that this may have consequences in the future. The findings point to the fact that these stroke patients could need special follow-up in the stroke's post-acute phase.

More research on delirium needed

We would like to emphasize that more research is needed on the long-term consequences of delirium during stroke. Improved knowledge could provide better follow-up of this patient group and reduce the long-term consequences. Research can also provide insight into how to prevent delirium in patients. Understanding delirium is important in the fight against dementia and psychiatric symptoms after a stroke.

All data were obtained from Nor-COAST's comprehensive study that followed stroke patients from Trondheim, Ålesund, Bergen, Oslo and Bærum over three years. The study recorded whether the patients had [delirium](#) during the [stroke](#) and how they felt in the time afterwards. The study originated from the Department of Neuromedicine and Movement Science at NTNU, and the research is now published in *BMC Neurology*.

More information: Vilde Nerdal et al, The relationship of acute delirium with cognitive and psychiatric symptoms after stroke: a longitudinal study, *BMC Neurology* (2022). [DOI:](#)

[10.1186/s12883-022-02756-5](https://doi.org/10.1186/s12883-022-02756-5)

Provided by Norwegian University of Science and Technology

Citation: Stroke patients with delirium may struggle more during recovery (2022, November 1)
retrieved 19 April 2024 from

<https://medicalxpress.com/news/2022-11-patients-delirium-struggle-recovery.html>

This document is subject to copyright. Apart from any fair dealing for the purpose of private study or research, no part may be reproduced without the written permission. The content is provided for information purposes only.