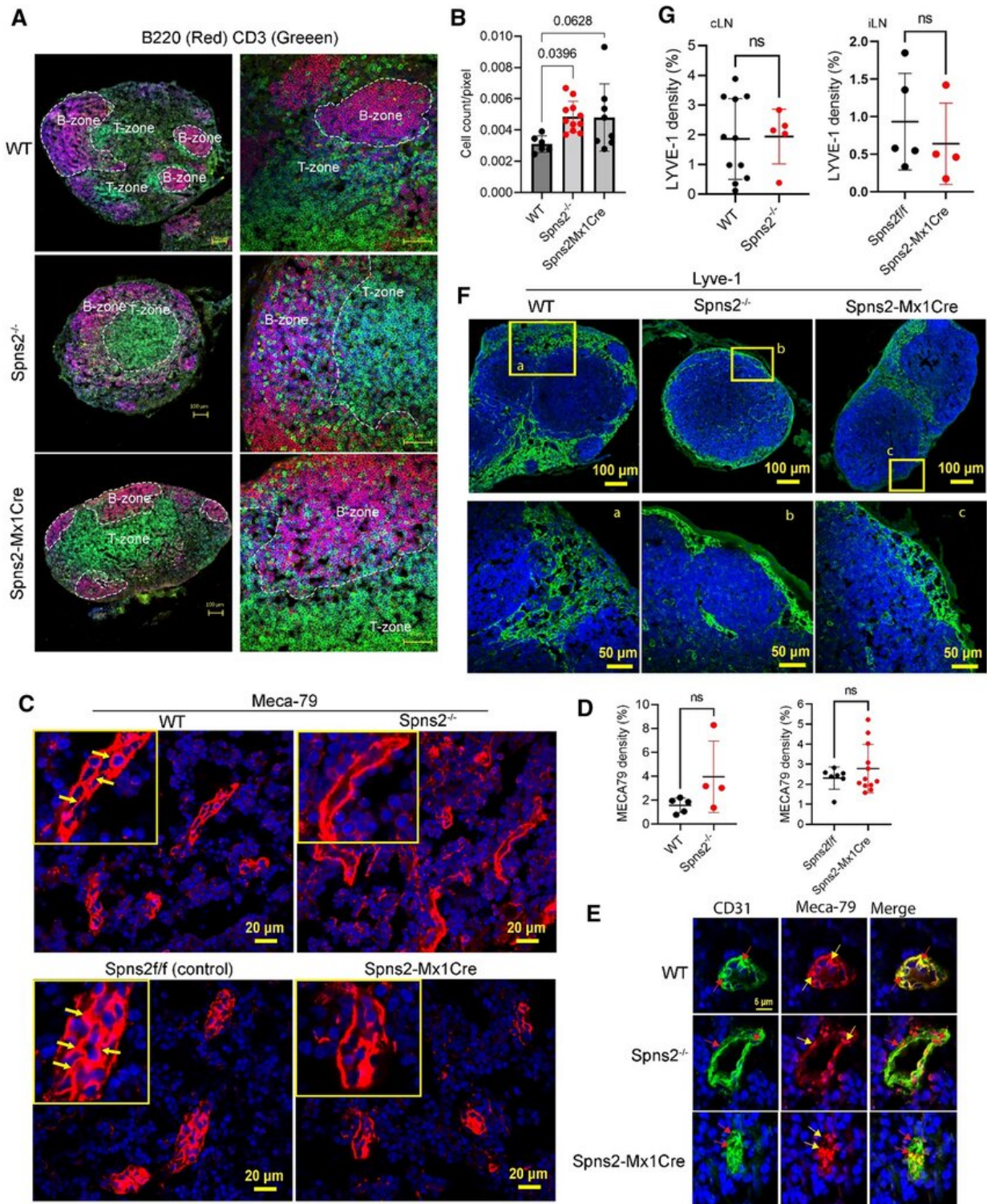


S1P transporter could be crucial in the development of therapeutics for the treatment of multiple sclerosis

November 10 2022



Spns2 deletion affects lymphocyte confinement and the vascular structures of the lymph nodes. A Representative confocal images of T cell zone (CD3-green) and B cell zone (B220-magenta) in cervical LNs of WT, Spns2^{-/-} and

Spns2-Mx1Cre mice. n = 3 per genotype. B The confinement of T and B cells in LNs of Spns2^{-/-} and Spns2-Mx1Cre mice was disorganized compared to that of WT, where more T cells were found in the B cell zones in the knockout mice. Each symbol represents one image from three mice for each genotype. Shown numbers are the P values. One-way ANOVA was used. C Immunostaining of cervical LNs of WT, Spns2^{-/-}, Spns2^{f/f} (without Mx1Cre) and Spns2-Mx1Cre mice with MECA-79. Arrows show the internal membranes in the HEVs of WT and Spns2^{f/f} mice. n = 3 per genotype. D Quantification of Meca-79 density in cervical LNs from WT, Spns2^{-/-}, Spns2^{f/f} (without Mx1Cre), and Spns2-Mx1Cre mice with MECA-79. ns not significant; t test. E Meca-79 localization was dysregulated in HEVs of Spns2^{-/-} and Spns2-Mx1Cre mice. Meca-79 (red) and CD31 (green) antibody. F LYVE-1 staining of the lymphatic vessels in inguinal LN of indicated genotypes. G Quantification of density of lymphatic vessels in the subcapsular regions of LNs of Spns2^{-/-} and Spns2-Mx1Cre mice and control mice. Each symbol represents one image from three mice for each genotype. ns not significant; t test. Credit: *Cellular and Molecular Life Sciences* (2022). DOI: 10.1007/s00018-022-04573-y

Multiple sclerosis (MS) is an autoimmune disease affecting the brain and spinal cord. In MS, the activated immune cells attack myelin, a protective layer surrounding nerve cells, which disrupts the transmission of nerve impulses along nerve cells.

Over time, there is permanent damage or deterioration of the nerves. Current treatments include [monoclonal antibodies](#) and oral therapies of sphingosine 1-phosphate (S1P) receptor modulators such as fingolimod and ozanimod.

However, S1P receptor modulators have been found to have multiple side effects, such as slowing [heart rate](#) and reduced lung function, due to the ubiquitous expression of S1P receptors in many [cell types](#) including those in blood vessels. Hence, a more targeted therapy would improve the safety profile of S1P drugs.

In a new study led by Assistant Professor Nguyen Nam Long from Yong Loo Lin School of Medicine, National University of Singapore (NUS Medicine) the researchers showed that targeting S1P transporters might be effective in treatment of MS, while preserving the cardiovascular functions of S1P signaling.

Earlier, Assistant Professor Nguyen Nam Long's team had demonstrated in a recent *Cell Reports* paper that plasma S1P is vital for blood vessel maturation and to maintain blood vessel health. Expanding from his previous study, Assistant Professor Nguyen led a team that looked into the reducing S1P transport from the [blood vessels](#) and lymphatic system via the protein Spns2.

Their findings show that elimination of Spns2 in postnatal life resulted in reduced levels of S1P in the lymphatic, but not the blood circulation system. In addition, they found that different forms of S1P were released into the lymph for attracting immune cells' emigration from the lymph nodes.

The elimination of Spns2 thus caused a reduction in the levels of white blood cells in the blood. When Spns2 deficient animals were exposed to the disease model of multiple sclerosis, these animals, but not the normal animals were resistant to the development of multiple sclerosis. They found that pathogenic white blood cell types in the central nervous system were reduced when Spns2 functions are blocked.

Assistant Professor Nguyen Nam Long, from the Immunology Translational Research Program (ITRP) and Department of Biochemistry at NUS Medicine, explained, "Membrane transporters have been neglected to explore as drug targets. This study would present Spns2, an S1P transporter as a novel drug target for the treatment of MS and possibly other [inflammatory diseases](#) that could reduce the risks of having multiple side-effects that have been reported for S1P receptors'

modulators."

"Our team as well as other researchers in the world are searching for the inhibitors of this protein in a hope to uncover a line of novel therapeutics against MS and other inflammatory conditions" added Dr. Nguyen.

Associate Professor Veronique Angeli, director of ITRP added, "This study by Asst Prof Nguyen and our researchers in ITRP deepens our understanding of the inflammation in various disease pathologies. With every new insight, these discoveries can be translated from bench to bedside to contribute towards novel treatment methods for the population to enhance health for the future."

The article is published in *Cellular and Molecular Life Sciences*.

More information: Zafrul Hasan et al, Postnatal deletion of Spns2 prevents neuroinflammation without compromising blood vascular functions, *Cellular and Molecular Life Sciences* (2022). [DOI: 10.1007/s00018-022-04573-y](https://doi.org/10.1007/s00018-022-04573-y)

Provided by National University of Singapore

Citation: S1P transporter could be crucial in the development of therapeutics for the treatment of multiple sclerosis (2022, November 10) retrieved 23 June 2024 from <https://medicalxpress.com/news/2022-11-s1p-crucial-therapeutics-treatment-multiple.html>

This document is subject to copyright. Apart from any fair dealing for the purpose of private study or research, no part may be reproduced without the written permission. The content is provided for information purposes only.