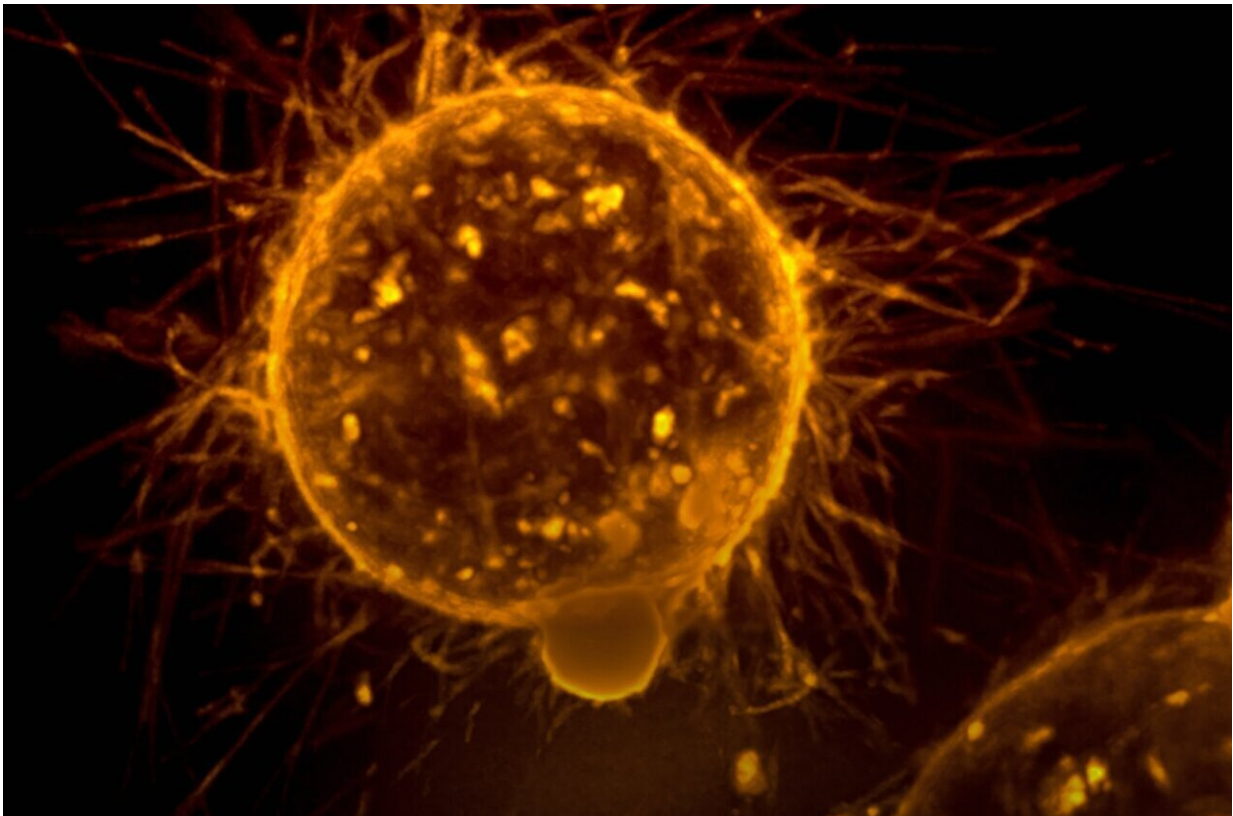


Fighting cancer is more efficient at dawn, study finds

December 7 2022



Credit: Unsplash/CC0 Public Domain

The ability of tumors to take hold and grow depends, among other things, on the effectiveness of the immune system in fighting them. Cancer cells, like pathogens, can be identified and targeted by a specific

immune response. Building on this, immunotherapy treatments aim to strengthen the immune response to better fight the disease.

In previous studies, the team from the University of Geneva (UNIGE) and the Ludwig-Maximilians University of Munich (LMU) had shown that the activation of the immune system is modulated according to the time of day, indicating a peak of efficiency early in the morning in humans.

Now, the research team demonstrates that the rhythmicity of the immune system—and in particular that of dendritic cells, its key sentinels—has a hitherto unsuspected impact on tumor growth, as well as on the effectiveness of immunotherapeutic treatments. These results, published in the journal *Nature*, indicate that simply changing the time of administration of a treatment could tremendously enhance its effectiveness.

Biological clocks regulate most physiological processes in living beings on a rhythm of about 24 hours. And the immune system is no exception. "By studying the migration of dendritic cells in the lymphatic system, one of the most essential elements of the [immune response](#), we had highlighted the fact that immune activation oscillates throughout the day, with a peak in the late behavioral resting phase," says Christoph Scheiermann, professor at the Department of Pathology and Immunology and the Geneva Center for Inflammation Research (GCIR) and the Center for Translational Research in Onco-Hematology (CRTOH) at the UNIGE Faculty of Medicine, who led this work. In the current study, the group focused on cancer to assess how this temporal modulation affected tumors.

Temporal profiling of dendritic cells

The scientists injected groups of mice with melanoma cells at six

different times of the day and then monitored tumor growth for a fortnight. "By varying only the time of injection, we observed very surprising results: tumors implanted in the afternoon grew little, while those implanted at night grew much faster, in accordance with the rhythm of activation of the mice's immune system", says Chen Wang, a researcher in Christoph Scheiermann's lab and first author of this study.

The research team then reproduced the experiment with mice that had no immune system. "There was no longer any difference related to the time of day, thus confirming that the latter is indeed induced by the immune response: the first immune cells activated are the dendritic cells of the skin, which are found 24 hours later in the lymph node. The T cells are then activated and attack the tumor." Moreover, by suppressing the internal clocks of the [dendritic cells](#), the rhythm of activation of the [immune system](#) disappears, confirming their key role.

Lastly, the researchers administered an immunotherapy treatment at different times of the day to mice whose tumor implantation had taken place at the same time. "This therapeutic vaccine consisted of a tumor-specific antigen, very similar to what is used to treat patients. When administered in the afternoon, the beneficial effect was again increased."

What about human beings?

In order to find out whether these results were repeated in humans, the scientists re-examined the data of patients treated with cancer vaccines for melanoma. Melanoma-specific T cells in these patients responded better to treatments administered early in the morning, which corresponds to the human circadian profile, reversed in comparison with mice, which are nocturnal animals. "This is very encouraging, but it is only a retrospective study of a small cohort of ten people," Christoph Scheiermann points out.

The researchers now want to confirm and refine these initial findings through [clinical studies](#). However, the very idea that a treatment can become more potent depending on the [time of day](#) opens up some surprising possibilities.

More information: Chen Wang et al, Dendritic cells direct circadian anti-tumor immune responses, *Nature* (2022). [DOI: 10.1038/s41586-022-05605-0](#)

Provided by University of Geneva

Citation: Fighting cancer is more efficient at dawn, study finds (2022, December 7) retrieved 23 April 2024 from <https://medicalxpress.com/news/2022-12-cancer-efficient-dawn.html>

<p>This document is subject to copyright. Apart from any fair dealing for the purpose of private study or research, no part may be reproduced without the written permission. The content is provided for information purposes only.</p>
--