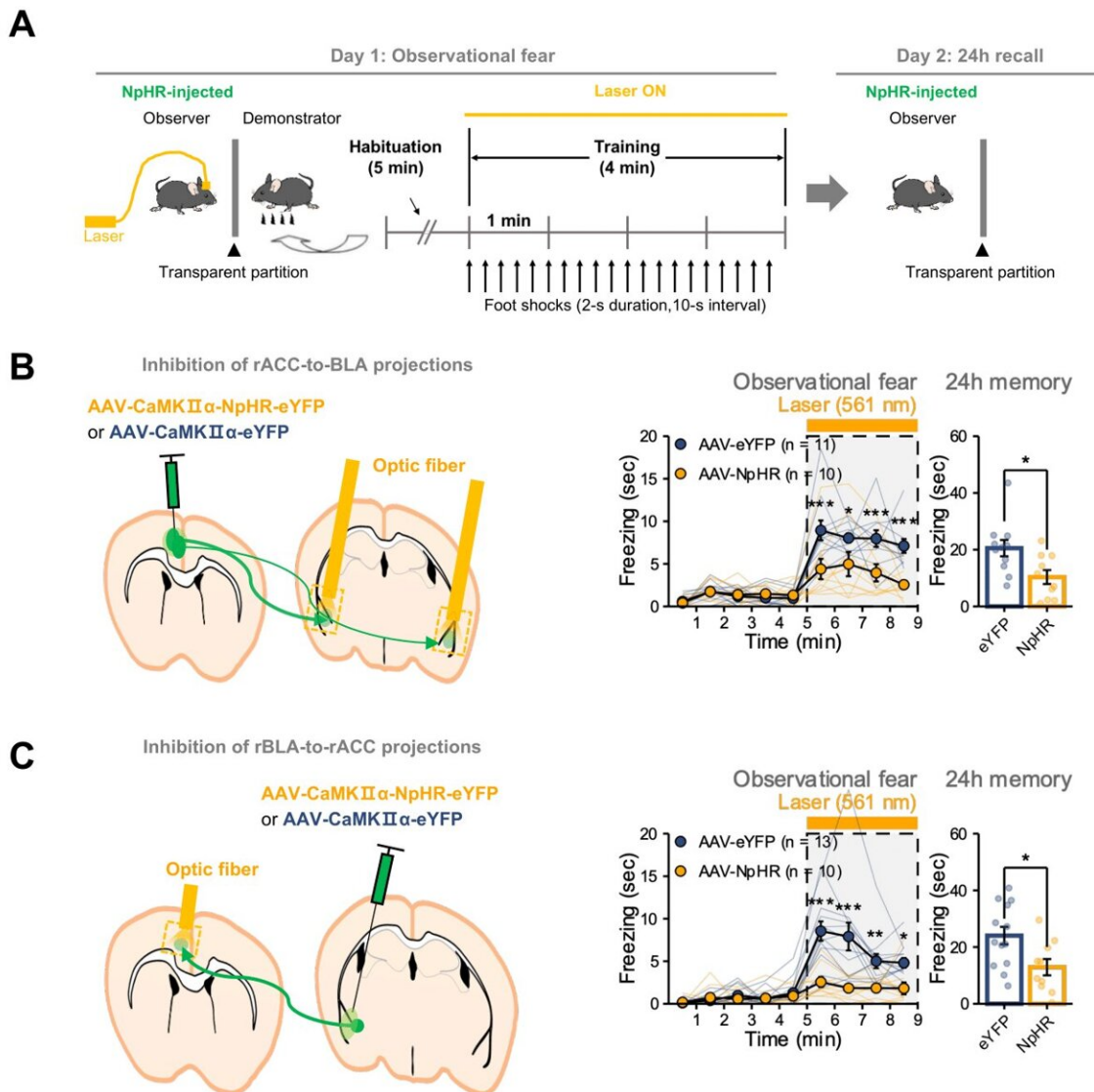


Synchronized neural oscillations in the right brain found to induce empathic behavior in mice

December 2 2022



Reciprocal connections between the rACC and rBLA are responsible for observational fear. A. Schematic illustrations of behavioral procedures for observational fear in mice. B. Optogenetic inhibition of rACC-BLA projections significantly reduced freezing during observational fear. C. Optogenetic inhibition of rACC-rBLA projections significantly reduced freezing during observational fear. Credit: Institute for Basic Science

A research team led by Dr. Shin Hee-Sup at the Center for Cognition and Sociality (CCS) within the Institute for Basic Science (IBS) in Daejeon, South Korea has discovered the underlying neural mechanism that allows us to feel empathy. The group's study on mice hinted that empathy is induced by the synchronized neural oscillations in the right hemisphere of the brain, which allows the animals to perceive and share each other's fear.

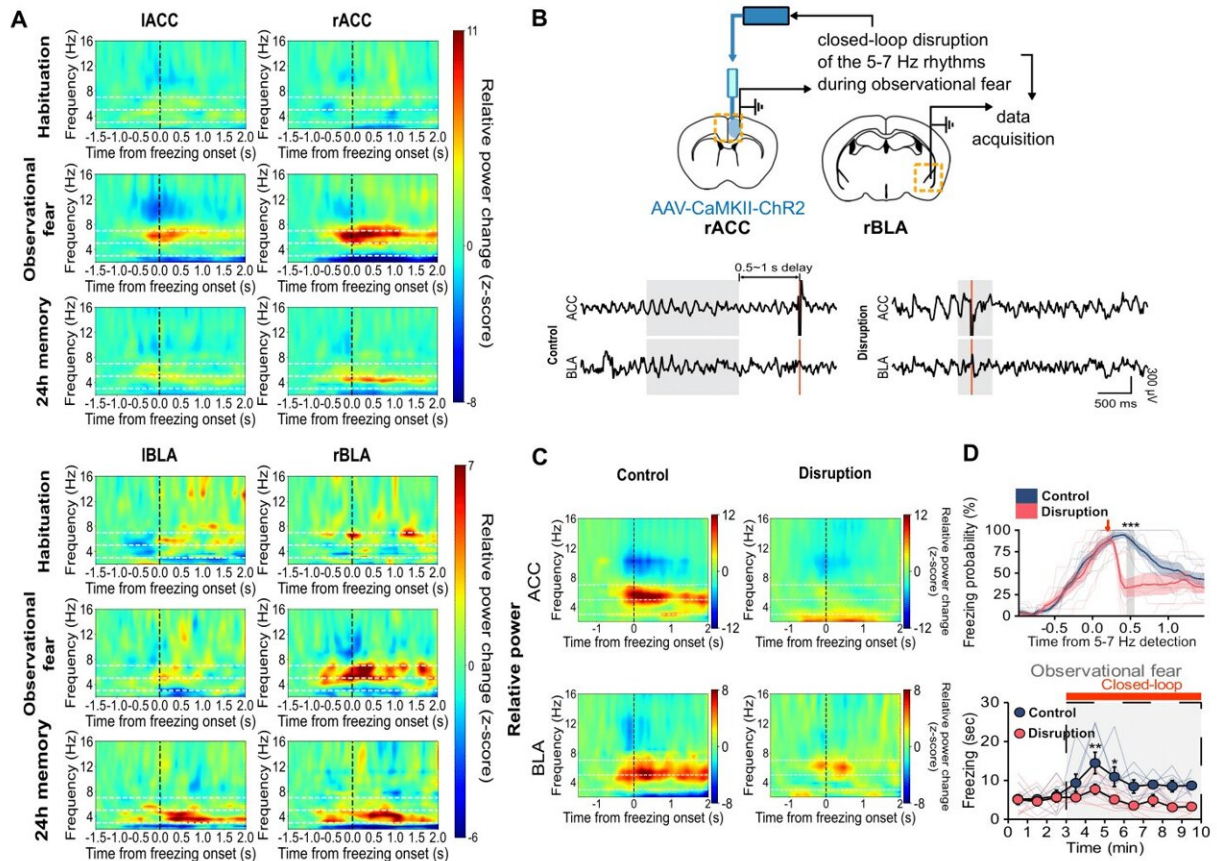
Empathy is the ability that allows us to perceive and understand another individual's emotions, such as joy, sadness, or fear. It is an essential function for human sociality, and its impairment has been observed in numerous psychiatric and neurological disorders such as autism, schizophrenia, and Alzheimer's disease. The precise mechanisms within the [brain](#) that form the basis of [empathy](#) have not been identified, and few studies have been conducted on uncovering its origins.

This capacity to sense the feelings of others is not unique to humans, and its biological mechanisms are shared with other mammals including rodents. "Observational fear," which is a rodent model for emotional contagion, is the basic form of affective empathy. This model has been well-established and is frequently used for studying the neurobiology of empathy (Figure 1A).

During the observational fear experiment, a "demonstrator" mouse is given an [electric shock](#), while an "observer" mouse watches from behind a transparent screen. When witnessing another animal receiving a shock, the observer mouse displays an immediate fear response, as demonstrated by its freezing behavior. The observer mouse is also known to be able to recall the experience at a later time.

The CCS-IBS team led by Dr. Shin Hee-Sup combined this observational fear model with optogenetic experiments to explore the origin of empathy. Notably, this study showed that the synchronized brain rhythms within multiple [brain areas](#) are essential for triggering empathy. In particular, the synchronization between the [anterior cingulate cortex](#) (ACC) and basolateral amygdala (BLA) is unique to empathic fear by indirect exposure to others' distress, not to fear by first-hand experience.

First, they showed that the reciprocal circuit between the ACC-BLA in the right hemisphere is essential for observational freezing behavior. When they optogenetically inhibited the ACC-BLA circuits only in the right brain, mice showed reduced observational freezing (Figure 1B & 1C). On the other hand, the mice were unaffected when only the left side was inhibited.



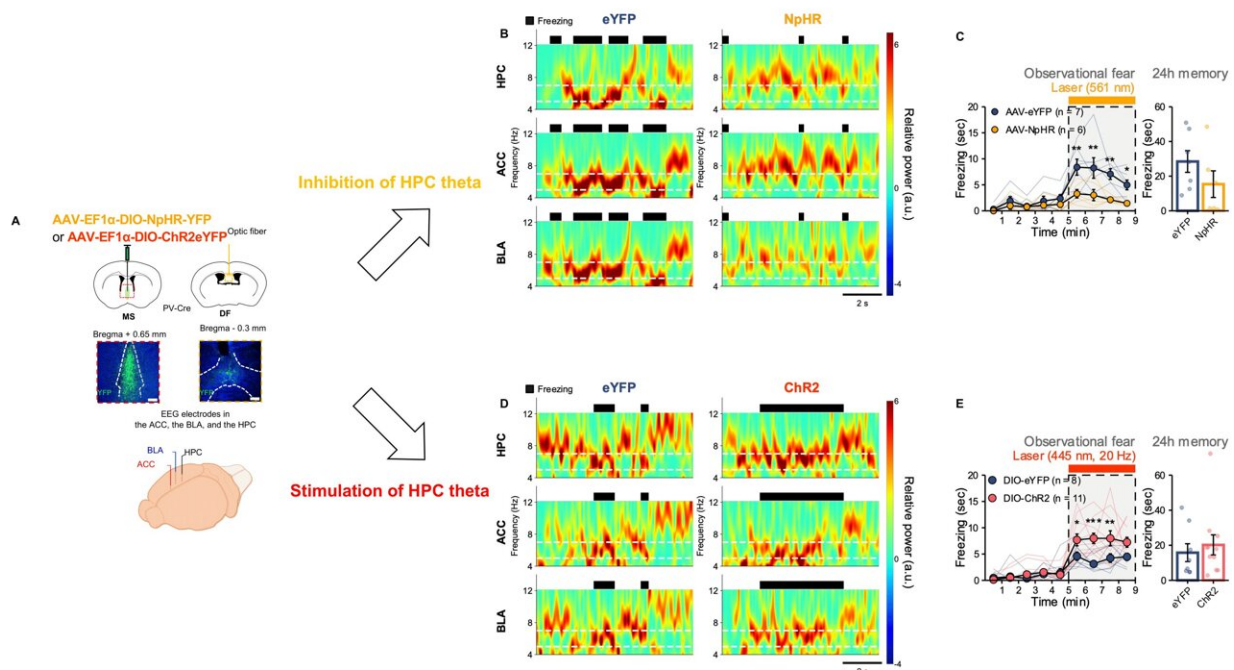
5-7 Hz rhythms in rACC and rBLA are causally involved in the empathic response. **A**. 5-7 Hz rhythms are selectively increased during observational fear in the rACC and rBLA. **B**. Schematic illustrations for closed-loop manipulation experiment. **C**. Closed-loop manipulation disrupted 5-7 Hz rhythms in the rACC and rBLA. **D**. Closed-loop manipulation disrupted freezing behavior during observational fear. Credit: Institute for Basic Science

Furthermore, the researchers recorded electroencephalogram (EEG) in the ACC and BLA. As a result, they found that brain rhythms with the range of 5-7 Hz selectively increased in the ACC and BLA at the specific moment within the observer mice at the time they showed empathic freezing behavior (Figure 2A). On the other hand, the demonstrator mice which experienced the electric shock first hand

showed increase in the lower 3-5 Hz range only within the BLA but not in the ACC.

Dr. Shin, states, "Synchronous neural oscillations within the networks could allow enhanced communications among multiple brain areas for various cognitive and emotional functions. However, their causal relationship has rarely been demonstrated."

To test the causal relationship between 5-7 Hz rhythms and empathic behavior, the team performed an experiment called "closed-loop manipulations," which involves using optogenetics to inhibit specific neural functions and monitoring the brain waves using EEG (Figure 2B). Through the closed-loop experiment, they could selectively disrupt 5-7 Hz rhythms in the ACC-BLA circuit, which in turn resulted in significant impairment of observational fear induced freezing during the conditioning sessions (Figure 2C & 2D). These results indicate that 5-7 Hz rhythms in the ACC-BLA circuit are causally involved in empathic behaviors.



Hippocampal theta oscillations bi-directionally modulate ACC-BLA theta oscillations and observational fear. A. Schematic illustrations of hippocampal modulations. B & C. Optogenetic inhibition of hippocampal theta decreased 5-7 Hz in the ACC-BLA circuit and observational freezing. D & E. Optogenetic stimulation of hippocampal theta increased 5-7 Hz in the ACC-BLA circuit and observational freezing. Credit: Institute for Basic Science

As such, the researchers hypothesized that hippocampal theta (4-12 Hz) rhythms may tune the synchronized activities within the ACC-BLA circuit. It has been suggested that hippocampal theta rhythm provides an oscillatory framework that synchronizes activities between different brain areas. They selectively modulated the lower range of hippocampal theta by optogenetic manipulations during observational fear (Figure 3A). Following the changes in hippocampal theta power, 5-7 Hz [rhythm](#) in the ACC-BLA circuits and empathic responses were bi-directionally modulated (Figure 3B-E).

This study strongly indicates that hippocampal-dependent 5-7 Hz synchronized oscillations in the ACC-BLA specifically drive empathic responses in mice.

Dr. Hee-Sup Shin remarked, "Considering the universality of observational fear across mammals, it is reasonable to suppose a similar neural signature critical for affective empathy may be found in humans and could be used to identify empathy dysfunction in humans with [psychiatric disorders](#) involving severe social deficits." He added, "At the moment, we do not know how hippocampal theta rhythms control the ACC-BLA rhythms. Future studies should address how multiple brain regions are simultaneously mobilized during observational [fear](#)."

More information: Seong-Wook Kim et al, Hemispherically lateralized rhythmic oscillations in the cingulate-amygdala circuit drive affective empathy in mice, *Neuron* (2022). [DOI: 10.1016/j.neuron.2022.11.001](https://doi.org/10.1016/j.neuron.2022.11.001)

Provided by Institute for Basic Science

Citation: Synchronized neural oscillations in the right brain found to induce empathic behavior in mice (2022, December 2) retrieved 10 May 2024 from <https://medicalxpress.com/news/2022-12-synchronized-neural-oscillations-brain-empathic.html>

<p>This document is subject to copyright. Apart from any fair dealing for the purpose of private study or research, no part may be reproduced without the written permission. The content is provided for information purposes only.</p>
--