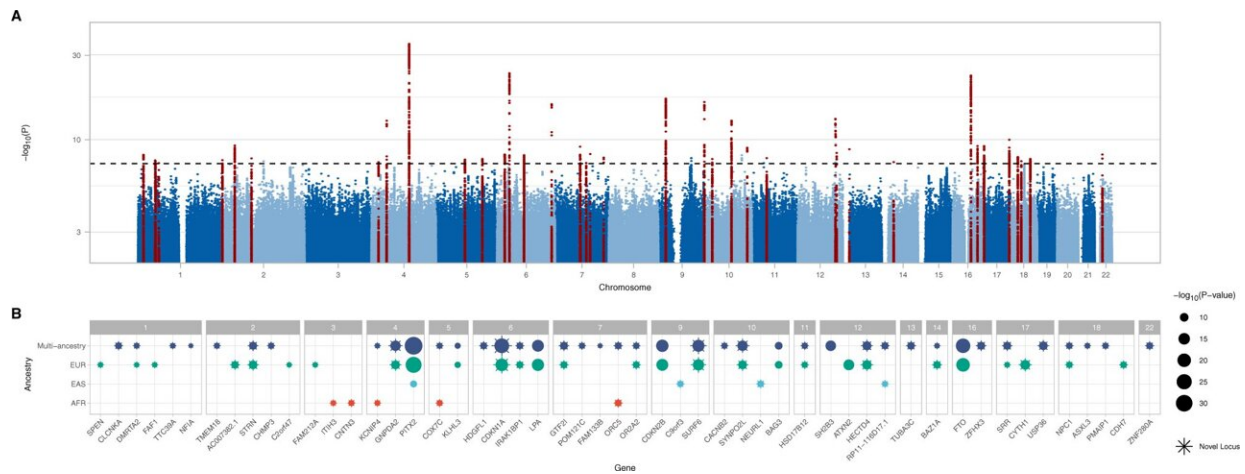


# Identifying new genetic variants linked to heart failure

January 9 2023, by Olivia Dimmer



Genome-wide associations for heart failure. Results of the multi-ancestry GWAS meta-analysis of all-cause heart failure, performed using a fixed-effect inverse variance weighted model. A Manhattan plot of genome-wide significant ( $p$

Citation: Identifying new genetic variants linked to heart failure (2023, January 9) retrieved 19 June 2024 from <https://medicalxpress.com/news/2023-01-genetic-variants-linked-heart-failure.html>

This document is subject to copyright. Apart from any fair dealing for the purpose of private study or research, no part may be reproduced without the written permission. The content is provided for information purposes only.