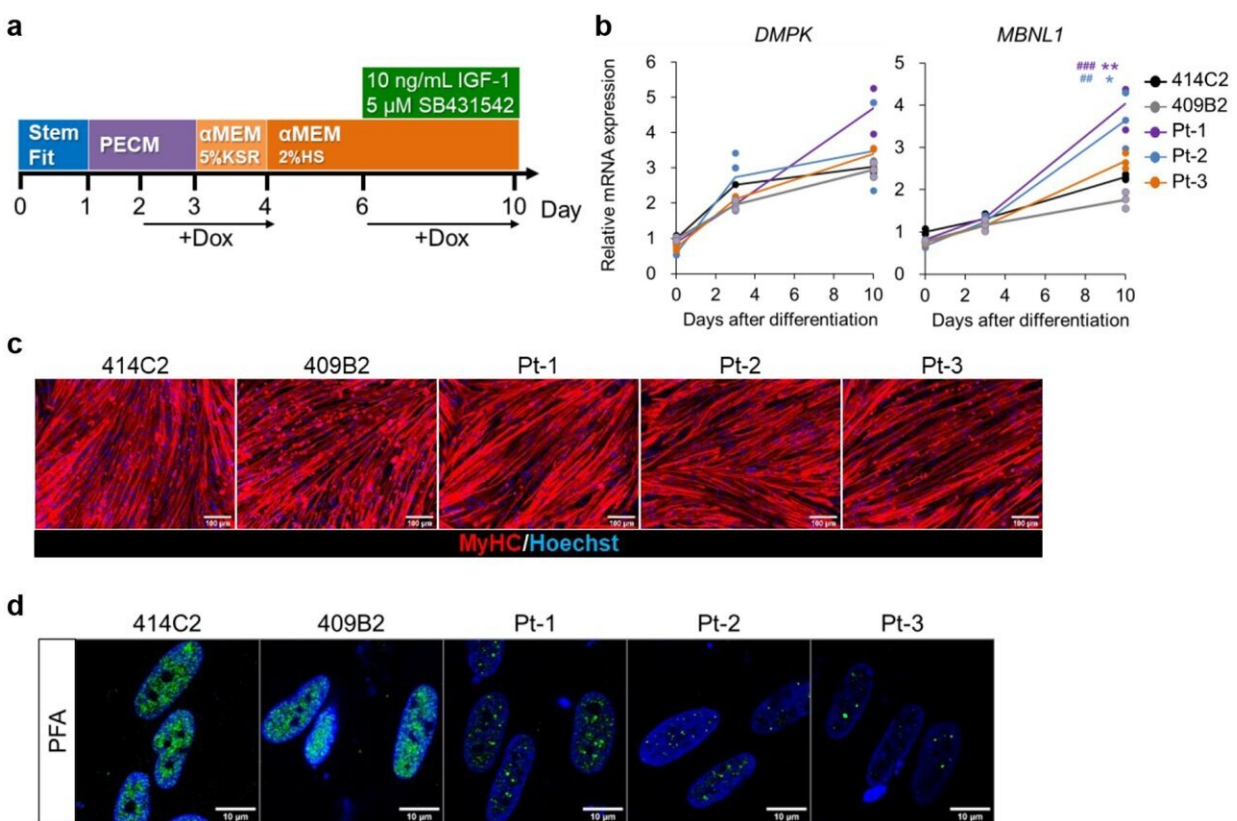


Reproducing skeletal muscle pathology of myotonic dystrophy using patient-derived iPSC cells

January 12 2023



Nuclear MBNL1 aggregation in the myotubes differentiated from MyoD-DM1-hiPSCs. (a) A schematic protocol of the MyoD1-induced differentiation for 10 days, with reference to our previous report. (b) Time-course of mRNA expressions of the DM1-related genes, DMPK and MBNL1 by RT-qPCR analyses on day 0, day 3 and day 10 of differentiation. The gene expressions are indicated by relative values to 414C2 control on day 0. The data represent the

means of three independent experiments and were analyzed by one-way ANOVA followed by Tukey's test (*P

Citation: Reproducing skeletal muscle pathology of myotonic dystrophy using patient-derived iPS cells (2023, January 12) retrieved 27 April 2024 from <https://medicalxpress.com/news/2023-01-skeletal-muscle-pathology-myotonic-dystrophy.html>

This document is subject to copyright. Apart from any fair dealing for the purpose of private study or research, no part may be reproduced without the written permission. The content is provided for information purposes only.