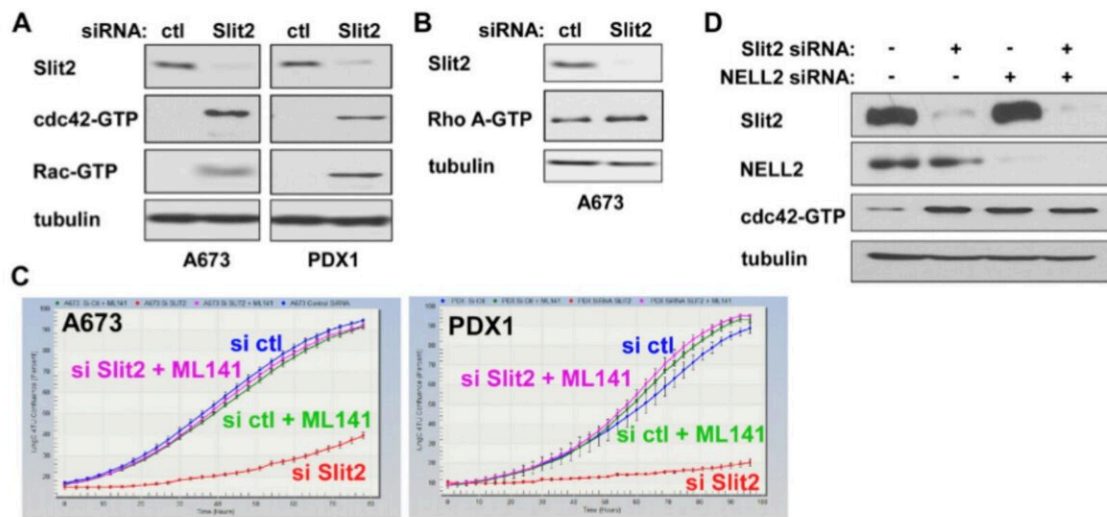


# Slit2 signaling stimulates Ewing sarcoma growth

January 16 2023



EWS::FLI1 binds to the Slit2 gene promoter in Ewing sarcoma cells. Credit: 2022 Suvarna et al.

A new research paper was published in *Genes & Cancer* on December 14, 2022, entitled, "Slit2 signaling stimulates Ewing sarcoma growth."

Ewing sarcoma is a [cancer](#) of bone and soft tissue in children driven by EWS::ETS fusion, most commonly EWS::FLI1. Because current cytotoxic chemotherapies are not improving the survival of those with metastatic or recurrent Ewing sarcoma cases, there is a need for novel

and more effective targeted therapies. While EWS::FLI1 is the major driver of Ewing sarcoma, EWS::FLI1 has been difficult to target.

"A promising alternative approach is to identify and target the molecular vulnerabilities created by EWS::FLI1," note the authors.

In this recent study, researchers Kruthi Suvarna, Panneerselvam Jayabal, Xiuye Ma, and Yuzuru Shiio from The University of Texas Health Science Center report that EWS::FLI1 induces the expression of Slit2, the ligand of Roundabout (Robo) receptors implicated in axon guidance and multiple other developmental processes.

"Using secretome proteomics, we found that EWS::FLI1 induces the expression of Slit2. We demonstrate that EWS::FLI1 binds to the [gene promoter](#) of Slit2 and activates its expression," write the researchers.

EWS::FLI1 binds to the Slit2 gene promoter and stimulates the expression of Slit2. Slit2 inactivates cdc42 and stabilizes the BAF chromatin remodeling complexes, enhancing EWS::FLI1 transcriptional output. Silencing of Slit2 strongly inhibited anchorage-dependent and anchorage-independent growth of Ewing sarcoma cells. Silencing of Slit2 receptors, Robo1 and Robo2, inhibited Ewing sarcoma growth as well. Their results uncover a new role for Slit2 signaling in stimulating Ewing sarcoma growth and suggest that this pathway can be targeted therapeutically.

"Ewing sarcoma's dependence on Slit2 signaling provides an excellent opportunity for therapeutic targeting. While a pharmacological inhibitor for Slit—Robo signaling is not yet available, a radioactively labeled anti-Robo1 monoclonal antibody was shown to suppress xenograft tumor growth of hepatocellular carcinoma cells and small cell lung cancer cells, suggesting that it is feasible to target the Slit—Robo pathway. Therapeutic targeting of Slit2—Robo1/2 signaling singly or in

combination with that of NELL2—Robo3 signaling in Ewing [sarcoma](#) warrants further investigations," write the authors.

**More information:** Kruthi Suvarna et al, Slit2 signaling stimulates Ewing sarcoma growth, *Genes & Cancer* (2022). [DOI: 10.18632/genesandcancer.227](#)

Provided by Impact Journals LLC

Citation: Slit2 signaling stimulates Ewing sarcoma growth (2023, January 16) retrieved 27 April 2024 from <https://medicalxpress.com/news/2023-01-slit2-ewing-sarcoma-growth.html>

This document is subject to copyright. Apart from any fair dealing for the purpose of private study or research, no part may be reproduced without the written permission. The content is provided for information purposes only.