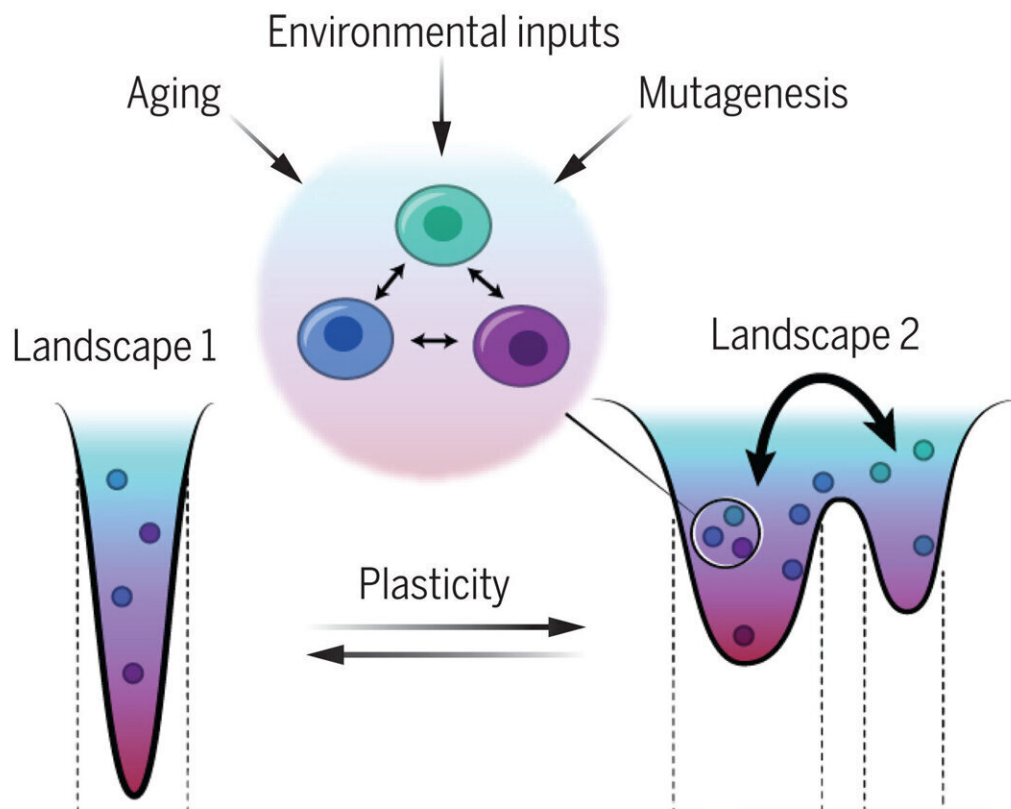


# The convergence of epigenetics and math to predict and intercept cancer cell behavior

February 10 2023



Epigenetic landscapes and phenotypic plasticity in cancer. Regulatory networks can define the number and probabilities of stable cellular states adopted by a cell population, representing attractors in the epigenetic landscape. Diverse inputs can promote transitions (and corresponding phenotypic plasticity) between cellular states within landscapes corresponding to the normal tissue (fewer attractors) and cancerous tumors (emergence of new attractors), as defined by parameters  $P_1$  and  $P_2$  that correspond to effective concentrations of landscape-defining molecules. Credit: *Science* (2023). DOI: 10.1126/science.aaw3835.

<https://www.science.org/doi/10.1126/science.aaw3835>

It is now widely understood that cancer is a disease of acquired defects in genes and gene function. An article published Feb. 9 in *Science*, and authored by Andrew Feinberg, M.D., of the Johns Hopkins Kimmel Cancer Center and the Institute for Basic Biomedical Sciences (IBBS) and Andre Levchenko, Sc.D., M.S., of the Yale School of Engineering and Applied Science, addresses new quantitative approaches to better define and measure these defects in gene function, known as epigenetics, and their interplay with the genetic landscape of cancer.

Epigenetics and its ability to turn genes on and off through chemical changes to regions of genes and the way DNA is packaged inside the [cell nucleus](#) is a key feature of many biological processes, such as embryo development. In [cancer](#) development, Feinberg explains, epigenetic changes promote phenotypic plasticity, the continued change in tumor cell behavior that helps cancer invade surrounding tissue, metastasize to other organs and evade natural defenses—such as the immune response—and chemotherapy. In cancer, this plasticity portends the malignant cell's ability to change states to invade other cells and tissue throughout the body and to maintain survival.

Mathematics has provided powerful tools to connect [phenotypic plasticity](#) in cancer to the [epigenetic changes](#) that drive it. In particular, the measurement of entropy (the uncertainty of information) can now be applied to epigenetics. As cancers develop, the epigenetic information controlling cell behavior is eroded, and we can identify the locations in the epigenome where this occurs and the genes that drive this increased entropy, says Feinberg.

"New methods in quantitative analyses of the cancer epigenetic

landscape now provide the tools to understand the connections between genetics and other drivers of [cancer development](#) and growth and the relationship to epigenetic regulatory networks that mediate the landscape," adds Feinberg, Bloomberg Distinguished Professor of Medicine at the Johns Hopkins University School of Medicine, Whiting School of Engineering and Bloomberg School of Public Health.

New technologies that integrate cancer biology and mathematics may make it possible to distinguish cancer cells from normal cells, and to quantify and measure the epigenetic modulation of cells states and how it influences the behavior of cells, the article reports.

"If we understand these processes, we might be able to identify [chemical changes](#) that occur only in cancer cells to diagnose cancer better and earlier and predict its behavior, so we can intervene with more targeted therapies," says Feinberg, director of the IBBS epigenetics center. "These quantitative approaches must be part of the cure. We can't understand cancer without them."

**More information:** Andrew P. Feinberg et al, Epigenetics as a mediator of plasticity in cancer, *Science* (2023). [DOI: 10.1126/science.aaw3835](#).  
[www.science.org/doi/10.1126/science.aaw3835](https://www.science.org/doi/10.1126/science.aaw3835)

Provided by Johns Hopkins University School of Medicine

Citation: The convergence of epigenetics and math to predict and intercept cancer cell behavior (2023, February 10) retrieved 7 May 2024 from <https://medicalxpress.com/news/2023-02-convergence-epigenetics-math-intercept-cancer.html>

This document is subject to copyright. Apart from any fair dealing for the purpose of private
---

study or research, no part may be reproduced without the written permission. The content is provided for information purposes only.