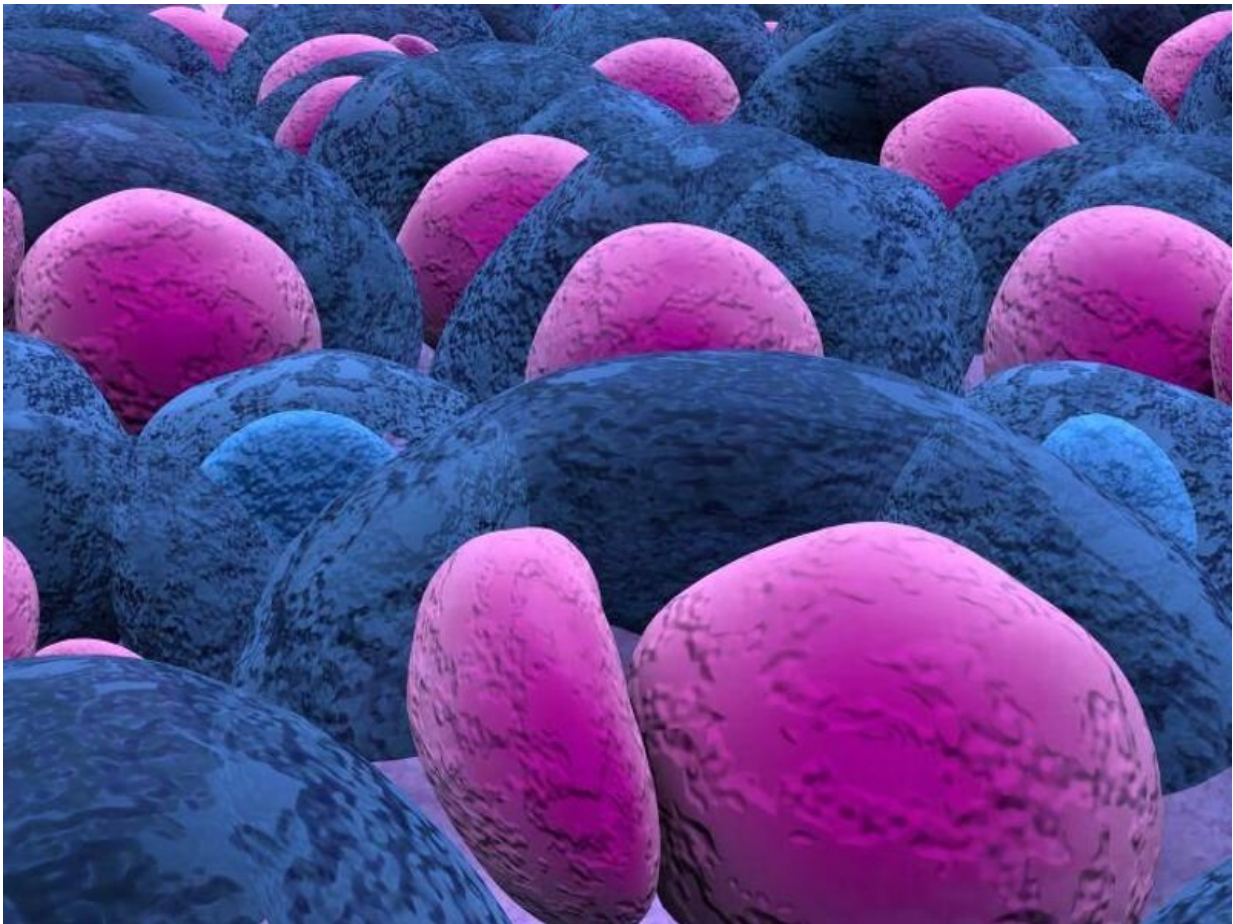


Ide-cel beneficial in relapsed, refractory multiple myeloma

February 10 2023, by Elana Gotkine



For patients with pretreated relapsed and refractory multiple myeloma,

idecabtagene vicleucel (ide-cel), a B-cell maturation antigen-directed chimeric antigen receptor T-cell therapy, prolongs progression-free survival and improves response compared with standard regimens, according to a study published online Feb. 10 in the *New England Journal of Medicine* to coincide with the European Society for Blood and Marrow Transplantation and European Hematology Association [CAR T-Cell Meeting](#), held from Feb. 9 to 11 in Rotterdam, Netherlands.

Paula Rodriguez-Otero, M.D., Ph.D., from Clínica Universidad de Navarra in Pamplona, Spain, and colleagues conducted an international, phase 3 trial involving adults with relapsed and refractory multiple myeloma who had received two to four regimens previously and had disease refractory to the last regimen. A total of 386 patients were randomly assigned to ide-cel and one of five standard regimens (254 and 132 patients, respectively).

The researchers found that the median [progression-free survival](#) was 13.3 and 4.4 months in the ide-cel and standard regimen groups, respectively, at a median follow-up of 18.6 months (hazard ratio for disease progression or death, 0.49).

A response occurred in 71 and 42 percent of patients in the ide-cel and standard regimen groups, respectively; complete response occurred in 39 and 5 percent, respectively. For overall survival, data were immature. Adverse events of grade 3 or 4 occurred in 93 and 75 percent of patients in the ide-cel and standard-regimen groups, respectively. Cytokine release syndrome occurred in 88 percent of patients who received ide-cel, and investigator-identified neurotoxic effects occurred in 15 percent.

"These findings provide potential support for the use of ide-cel in patients with triple-class-exposed relapsed and refractory multiple myeloma, a population with poor survival outcomes," the authors write.

The study was partially funded by 2seventy bio and Celgene, a Bristol Myers Squibb company; Bristol Myers Squibb and 2seventy bio manufacture idecabtagene vicleucel.

More information: Paula Rodriguez-Otero et al, Ide-cel or Standard Regimens in Relapsed and Refractory Multiple Myeloma, *New England Journal of Medicine* (2023). [DOI: 10.1056/NEJMoa2213614](https://doi.org/10.1056/NEJMoa2213614)

Copyright © 2023 [HealthDay](https://www.healthday.com). All rights reserved.

Citation: Ide-cel beneficial in relapsed, refractory multiple myeloma (2023, February 10) retrieved 24 April 2024 from <https://medicalxpress.com/news/2023-02-ide-cel-beneficial-relapsed-refractory-multiple.html>

This document is subject to copyright. Apart from any fair dealing for the purpose of private study or research, no part may be reproduced without the written permission. The content is provided for information purposes only.