

Receptor location matters for psychedelic drug effects

February 16 2023

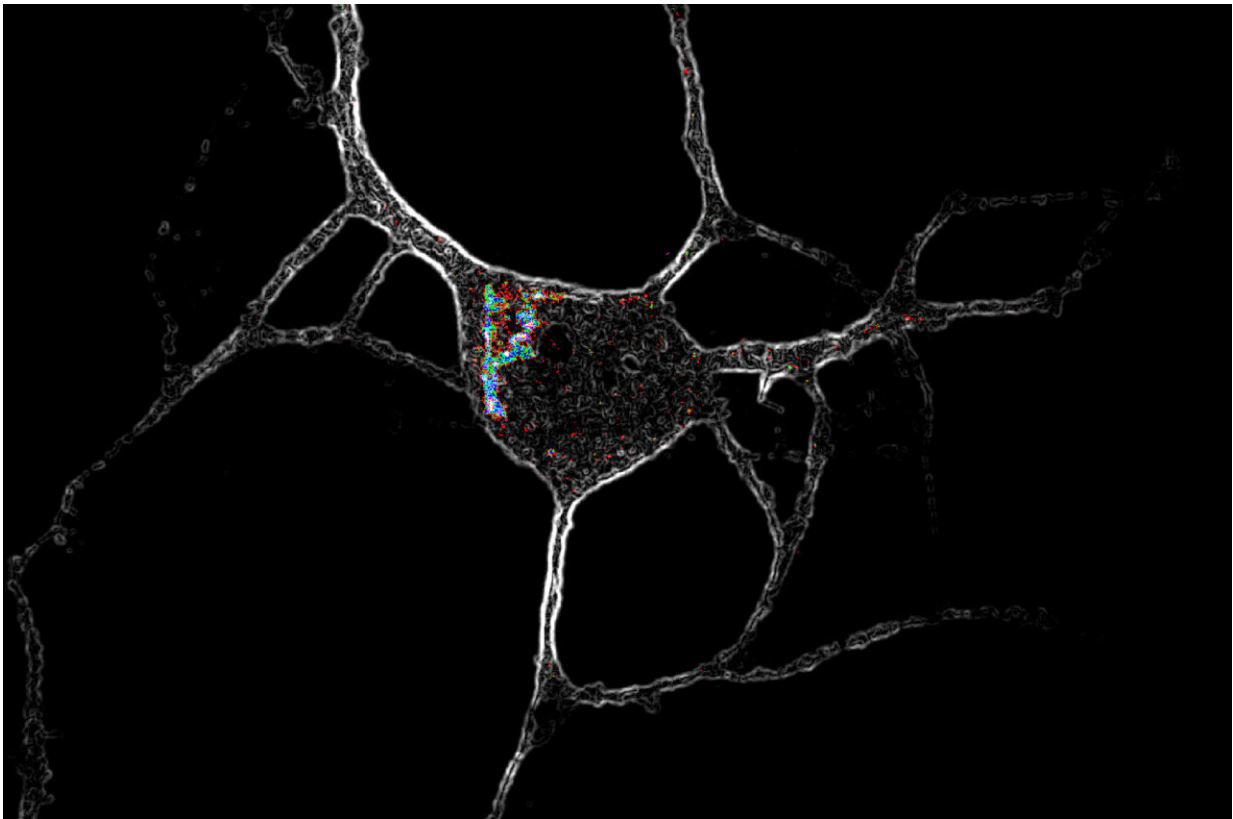


Image of a cortical neuron (white) expressing serotonin 2A (5-HT2A) receptors (multicolor). New work shows that engaging 5-HT2A receptors inside cells, but not on the cell surface, encourages cell growth and formation of new connections. Credit: David Olson/UC Davis

Location, location, location is the key for psychedelic drugs that could

treat mental illness by rapidly rebuilding connections between nerve cells. In a paper published in *Science*, researchers at the University of California, Davis show that engaging serotonin 2A receptors inside neurons promotes growth of new connections but engaging the same receptor on the surface of nerve cells does not.

The findings will help guide efforts to discover [new drugs](#) for depression, PTSD and other disorders, said senior author David E. Olson, associate professor of chemistry, biochemistry and [molecular medicine](#) and director of the Institute for Psychedelics and Neurotherapeutics at UC Davis.

Drugs such as LSD, MDMA and psilocybin show great promise for treating a wide range of mental disorders that are characterized by a loss of neural connections. In laboratory studies, a single dose of these drugs can cause rapid growth of new dendrites—branches—from [nerve cells](#), and formation of new spines on those dendrites.

Olson calls this group of drugs "psychoplastogens" because of their ability to regrow and remodel connections in the brain.

Earlier work from Olson's and other labs showed that [psychedelic drugs](#) work by engaging the serotonin 2A receptor (5-HT_{2A}R). But other drugs that engage the same receptor, including serotonin, do not have the same growth effects.

Maxemiliano Vargas, a graduate student in Olson's lab, Olson and colleagues experimented with chemically tweaking drugs and using transporters to make it easier or harder for compounds to slip across cell membranes. Serotonin itself is polar, meaning it dissolves well in water but does not easily cross the lipid membranes that surround cells. The psychedelics, on the other hand, are much less polar and can easily enter the interior of a cell.

They found that the growth-promoting ability of compounds was correlated with the ability to cross cell membranes.

Drug receptors are usually thought of as being on the cell membrane, facing out. But the researchers found that in nerve cells, serotonin 2A receptors were concentrated inside cells, mostly around a structure called the Golgi body, with some receptors on the cell surface. Other types of signaling [receptors](#) in the same class were on the surface.

The results show that there is a [location](#) bias in how these drugs work, Olson said. Engaging the serotonin 2A receptor when it is inside a cell produces a different effect from triggering it when it is on the outside.

"It gives us deeper mechanistic insight into how the receptor promotes plasticity, and allows us to design better drugs," Olson said.

More information: Maxemiliano V. Vargas et al, Psychedelics promote neuroplasticity through activation of intracellular 5-HT_{2A} receptors, *Science* (2023). [DOI: 10.1126/science.adf0435](https://doi.org/10.1126/science.adf0435).
www.science.org/doi/10.1126/science.adf0435

Evan M. Hess et al, Possible psychedelic therapeutic mechanism, *Science* (2023). DOI: 10.1126/science.adg2989 ,
www.science.org/doi/10.1126/science.adg2989

Provided by UC Davis

Citation: Receptor location matters for psychedelic drug effects (2023, February 16) retrieved 25 April 2024 from
<https://medicalxpress.com/news/2023-02-receptor-psychedelic-drug-effects.html>

This document is subject to copyright. Apart from any fair dealing for the purpose of private study or research, no part may be reproduced without the written permission. The content is provided for information purposes only.