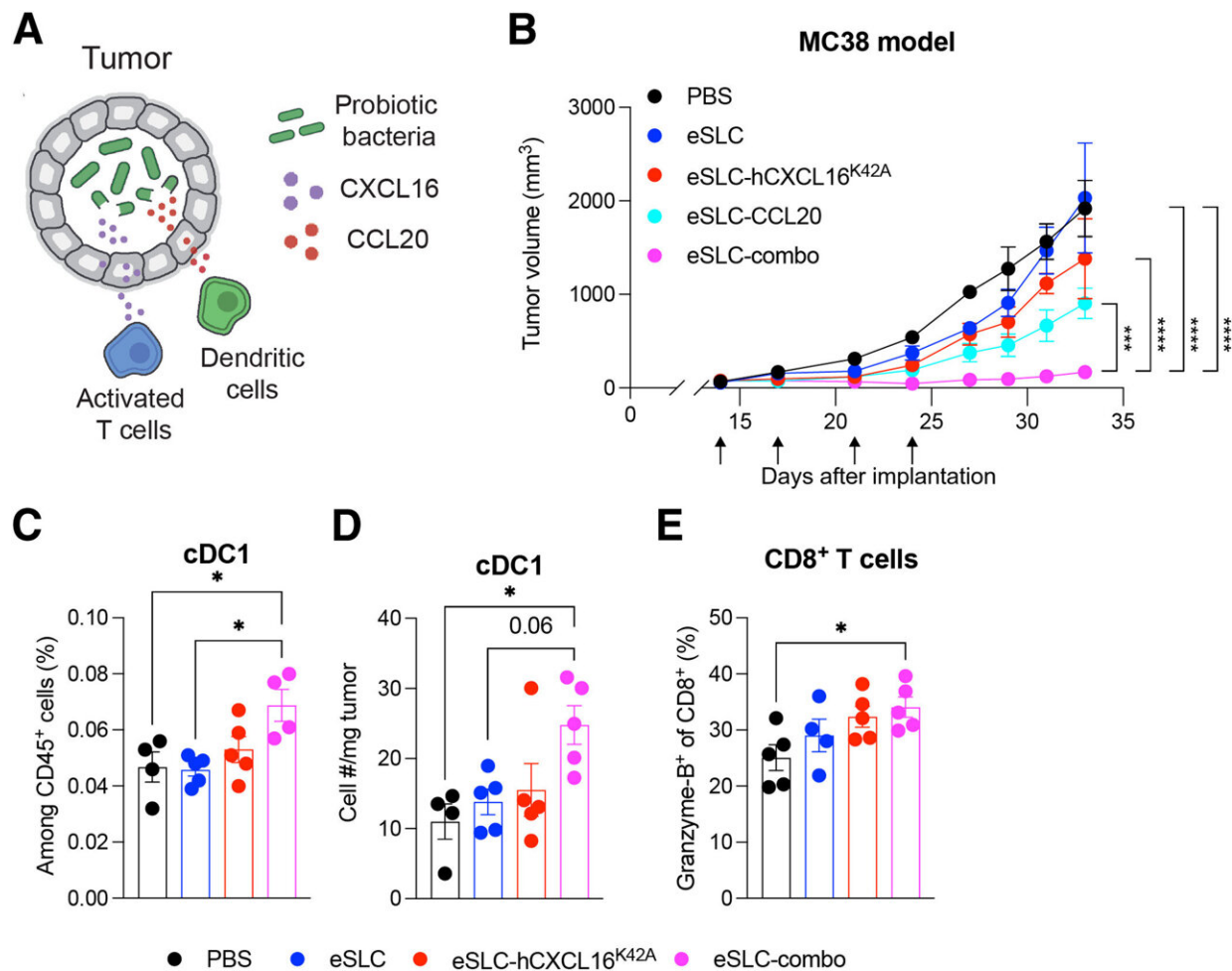


Engineered bacteria find tumors, then alert immune cells

March 8 2023, by Alan Dove



Combination of CXCL16 and CCL20 synergizes to promote antitumor immunity. (A) Schematic overview of the approach to recruit DCs to tumors via CCL20 production in probiotic bacteria to complement activated T cell recruitment via CXCL16 (B) Tumor growth curves from C57BL/6 mice (n = 5 per group) subcutaneously implanted with 5×10^5 MC38 colorectal tumor cells

on both hind flanks. When tumor volumes were 50 to 150 mm³, mice received intratumoral injections (indicated by black arrows) every 3 to 4 days with PBS, eSLC, eSLC-hCXCL16^{K42A}, eSLC-CCL20, or eSLC-combo (1:1 mixture of eSLC-hCXCL16^{K42A} and eSLC-CCL20). Data are representative of four independent experiments (***P

Citation: Engineered bacteria find tumors, then alert immune cells (2023, March 8) retrieved 23 April 2024 from <https://medicalxpress.com/news/2023-03-bacteria-tumors-immune-cells.html>

This document is subject to copyright. Apart from any fair dealing for the purpose of private study or research, no part may be reproduced without the written permission. The content is provided for information purposes only.