


# Understanding what prevents shared decision making from wider implementation with Black patients


March 28 2023

**Understanding what prevents shared decision making from wider implementation with Black patients**


Four thematic areas emerged when researchers asked patients about their preferences, needs and challenges around shared decision making .




**Preferences for emotive communication with their provider.**



**A need for doctors to involve family members in the treatment of T2D.**



**A need for more medical information and education.**



**Mistrust in providers**

Source: Zisman-Ilani, Y. Disparities in Shared Decision Making Research and Practice: The Case for Black American Patients. *AnnFamMed* 2023.

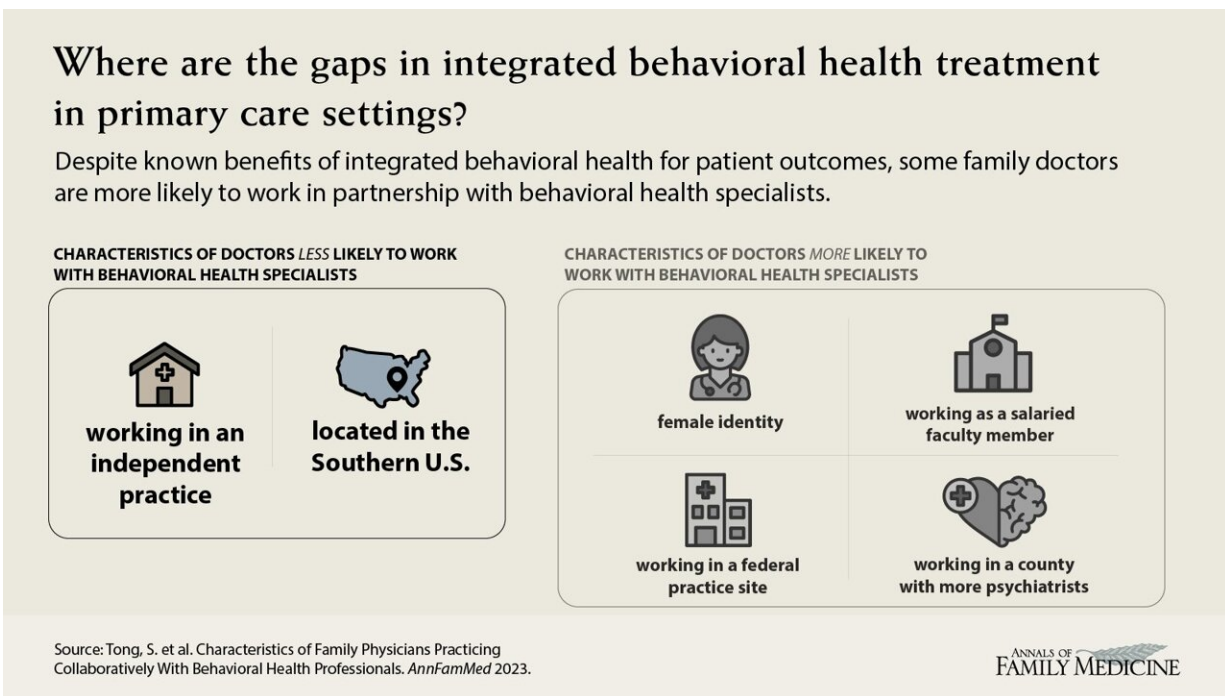
ANNALS OF FAMILY MEDICINE

Zisman-Ilani - Disparities in Shared Decision Making Research and Practice: The Case for Black American Patients. Credit: *Annals of Family Medicine*

To understand the perspectives of Black patients on shared decision making (SDM) during medical appointments, researchers and clinicians investigated the preferences, needs and challenges around SDM as

experienced by Black individuals. The team also offers possible adaptations and modifications for SDM models, practice and research within Black communities.

The study team recruited 32 Black patients—18 men and 17 women—with type 2 diabetes from safety-net primary care clinics caring for medically underserved racial and ethnic communities. The team conducted qualitative interviews, asking about unmet needs, challenges and what might help in facilitating SDM. The team asked about issues related to race, culture and disparities. At the end of the interviews, participants completed the 9-item Shared Decision Making Questionnaire (SDM-Q-9).



Tong - Characteristics of Family Physicians Practicing Collaboratively With Behavioral Health Professionals. Credit: *Annals of Family Medicine*

Four themes emerged from the interviews: The first was preferences for humanistic communication. Participants reported a desire for their doctors to express empathy, concern and compassion as part of the medical appointment. They also wanted communications that utilized first names between doctors and patients and wanted "ice breaker" communications including humor and conversations with them rather than talking at them.

The second theme that emerged was the need for doctors to account for the central role of family members in [decision-making](#) to facilitate adherence and engagement with the prescribed treatment. The third was the need for more [medical information](#), specifically about tests and treatments; and the fourth theme was a growing mistrust in doctors, especially when patients felt unseen to the doctor or staff. Zisman-Ilani et al also suggested actions to help doctors better communicate with patients.

### When clinicians use social risk information in clinical care, where do they retrieve patient data from?

Survey results suggest that physicians rely on multiple sources of information to identify their patients' social determinants of health (SDOH).



**76%** Conversations with patients



**64%** Prior personal knowledge



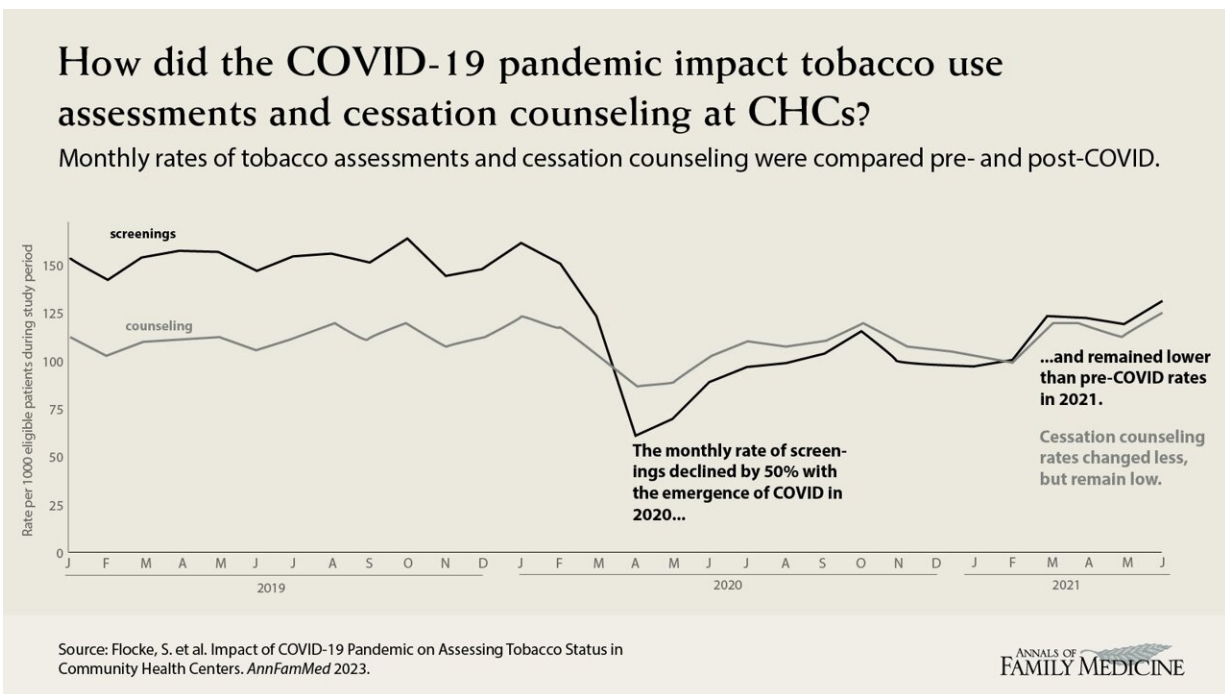
**46%** SDH screen results in patient record

Source: Bunce, A. et al. Patient-Reported Social Risks and Clinician Decision Making: Results of a Clinician Survey in Primary Care Community Health Centers. *AnnFamMed* 2023.

Bunce - Patient-Reported Social Risks and Clinician Decision Making: Results of a Clinician Survey in Primary Care Community Health Centers. Credit: *Annals of Family Medicine*

The team argue that their findings offer meaningful and necessary insights and recommendations for future use and adaptations to make SDM more valuable in the care of Black patients and other ethnorracial minorities.

Shared Decision Making (SDM) has been studied for several decades, but its implementation and use with Black and other ethnic and racial minority patients is limited.



Flocke - Impact of COVID-19 Pandemic on Assessing Tobacco Status in Community Health Centers. Credit: *Annals of Family Medicine*

Accommodations for SDM practice with Black patients in safety-net primary care settings are needed to make SDM more relevant and socioculturally sensitive to the experiences, needs and preferences of diverse groups of patients.

The paper is published in *The Annals of Family Medicine*.

**More information:** Yaara Zisman-Ilani et al, Disparities in Shared Decision-Making Research and Practice: The Case for Black American Patients, *The Annals of Family Medicine* (2023). [DOI: 10.1370/afm.2943](https://doi.org/10.1370/afm.2943)

Provided by American Academy of Family Physicians

Citation: Understanding what prevents shared decision making from wider implementation with Black patients (2023, March 28) retrieved 24 April 2024 from <https://medicalxpress.com/news/2023-03-decision-wider-black-patients.html>

<p>This document is subject to copyright. Apart from any fair dealing for the purpose of private study or research, no part may be reproduced without the written permission. The content is provided for information purposes only.</p>
--