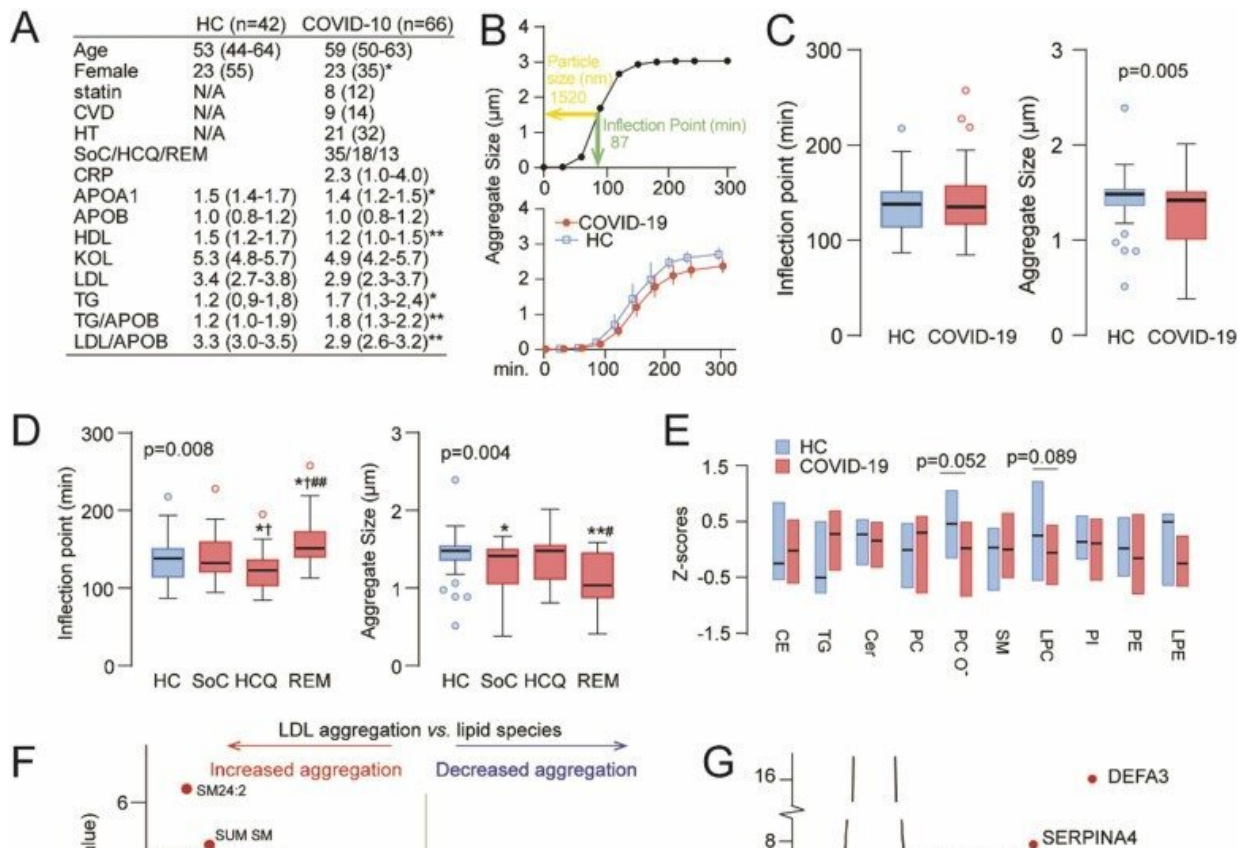


# Severe COVID-19 can increase the risk of cardiovascular disease

March 13 2023



LDL aggregation following severe COVID-19 disease. (A) Demographics and lipoprotein levels in the study population. (B) Representative aggregation curves from a study subject (top panel) and in HC and COVID-19 patients (lower panel). (C) Tukey plots showing the inflection point (left panel) and LDL aggregate size (right panel) in HC and COVID-19 patients. (D) Tukey plots showing the inflection point (left panel) and LDL aggregate size (right panel) according to treatment modalities. \*p

Citation: Severe COVID-19 can increase the risk of cardiovascular disease (2023, March 13)  
retrieved 26 April 2024 from  
<https://medicalxpress.com/news/2023-03-severe-covid-cardiovascular-disease.html>

This document is subject to copyright. Apart from any fair dealing for the purpose of private study or research, no part may be reproduced without the written permission. The content is provided for information purposes only.