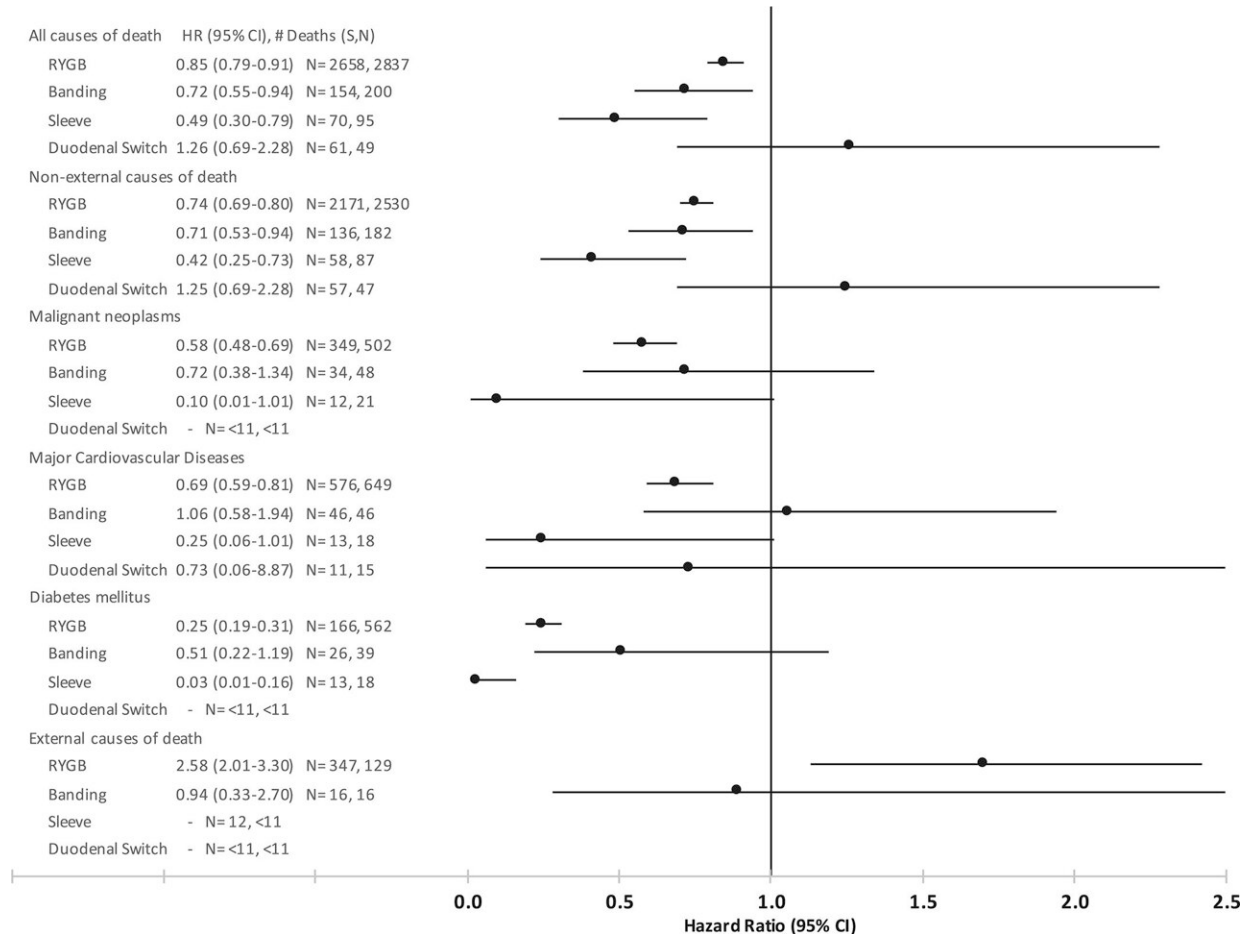


What really works for weight loss?

March 6 2023



Mortality risks of bariatric surgery patients compared with non-surgery driver license applicant participants stratified by surgery type. Non-external causes of death defined as Natural or Pending Investigation with specified codes listed in the non-external causes of death categories (Supporting Information Table S2). External causes of death defined as suicide or homicide or accident or missing (NA) with specified codes listed in the external causes of death categories (Supporting Information Table S2). All disease classifications were taken from

the primary causes of death except diabetes and Alzheimer disease, which also used secondary causes of death. Malignant neoplasms used codes defined in Supporting Information Table S1. Counts less than 11 are required by the Utah Department of Health to be reported only as

Citation: What really works for weight loss? (2023, March 6) retrieved 5 May 2024 from <https://medicalxpress.com/news/2023-03-weight-loss.html>

<p>This document is subject to copyright. Apart from any fair dealing for the purpose of private study or research, no part may be reproduced without the written permission. The content is provided for information purposes only.</p>
--