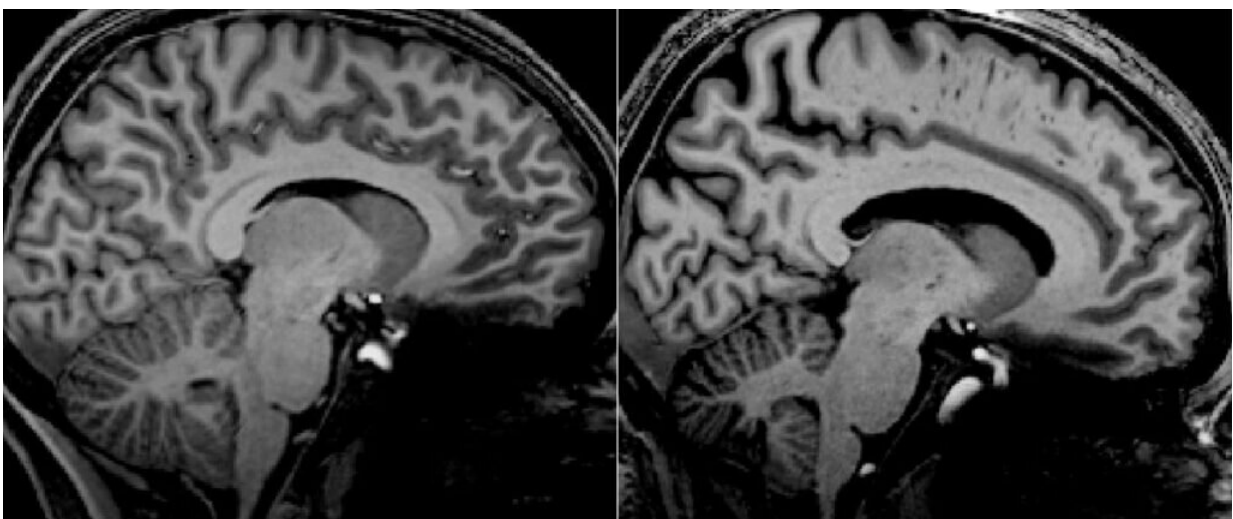


# World's strongest MRI investigates COVID and myalgic encephalomyelitis/chronic fatigue impacts on the brain

March 14 2023, by Emma O'Connor

---



MRI scan of a brain showing a patient with long COVID on the left and ME/CFS on the right. Credit: Griffith University

In a world first, Griffith University researchers have used an ultra-high field MRI (7 Tesla) to investigate how COVID-19 and myalgic encephalomyelitis/chronic fatigue syndrome (ME/CFS) mirror the same effects on the brain structure. The findings, "Brainstem volume changes in myalgic encephalomyelitis/chronic fatigue syndrome and long COVID patients," have been published in *Frontiers in Neuroscience*.

Studies show that up to 43% of people infected by SARS-CoV-2 do not recover fully and develop long COVID in all cohorts, even in [young adults](#), students, and children. Recent studies showed that 13–58% of long COVID patients get ME/CFS and symptoms like brain fog, fatigue, pain, and [autonomic dysfunction](#) are similar in ME/CFS and long COVID patients.

Dr. Sonya Marshall-Gradisnik, Director of Griffith's National Center for Neuroimmunology and Emerging Diseases and also works at the university's Menzies Health Institute Queensland, said the purpose of the study was to demonstrate the potential consistencies between the ME/CFS and long COVID patients.

"We primarily used the 7T MRI to research the brainstem and its sub regions as it helps to resolve brain structures more precisely to discover abnormalities that other MRIs aren't able to detect," Dr. Marshall-Gradisnik said.

Lead author Dr. Kiran Thapaliya said the 7T MRI showed the brainstem was significantly larger in ME/CFS and long COVID patients compared to those who did not suffer from the same ailments.

"It also showed similar volumes of the brainstem in patients which could be the reason long COVID patients exhibit all common core symptoms of ME/CFS," Dr. Thapaliya said.

"We also discovered smaller midbrain volumes were associated with more severe breathing difficulty in ME/CFS and long COVID patients."

The 7T MRI used in the study is one of only two in Australia.

**More information:** Kiran Thapaliya et al, Brainstem volume changes in myalgic encephalomyelitis/chronic fatigue syndrome and long COVID

patients, *Frontiers in Neuroscience* (2023). [DOI: 10.3389/fnins.2023.1125208](https://doi.org/10.3389/fnins.2023.1125208)

Provided by Griffith University

Citation: World's strongest MRI investigates COVID and myalgic encephalomyelitis/chronic fatigue impacts on the brain (2023, March 14) retrieved 10 May 2024 from <https://medicalxpress.com/news/2023-03-world-strongest-mri-covid-myalgic.html>

This document is subject to copyright. Apart from any fair dealing for the purpose of private study or research, no part may be reproduced without the written permission. The content is provided for information purposes only.