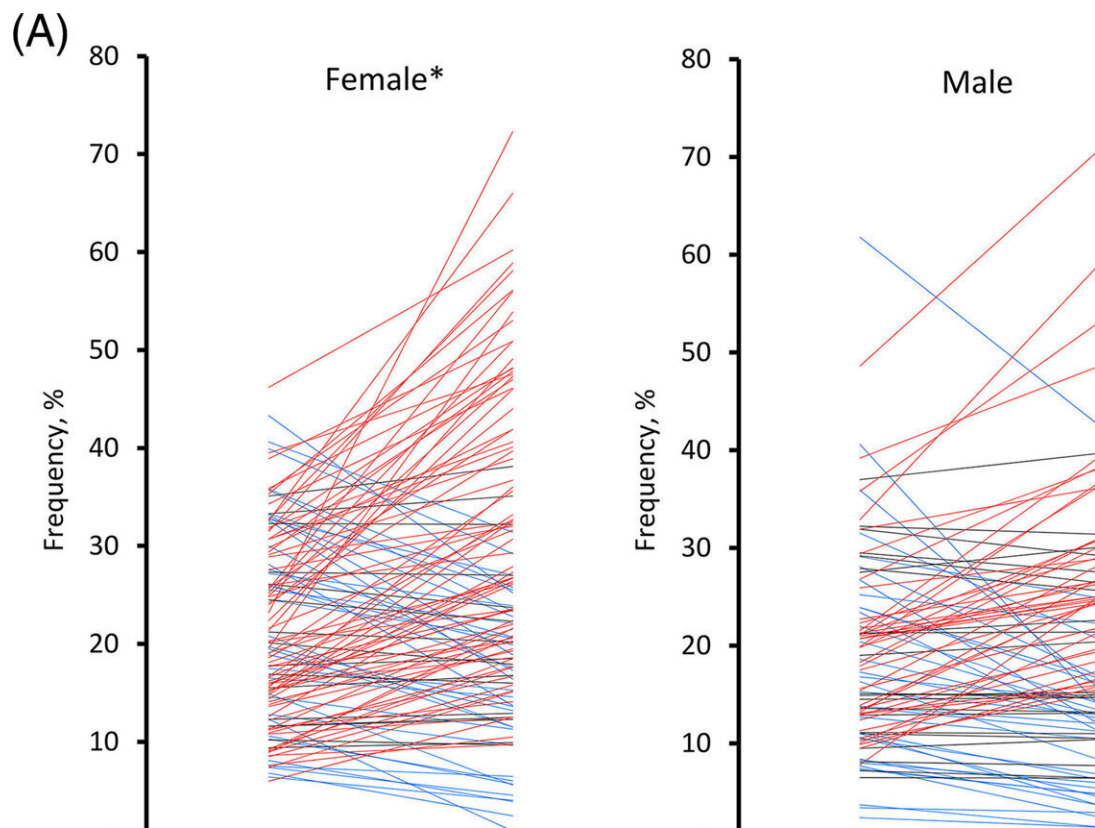


New research investigates differences in sickle cell disease between the sexes

May 18 2023



Change in the frequency of F cells from the circulating reticulocyte to the mature red blood cell compartment in female and male patients. (A) For each patient, F-Retic % and F-RBC% values are shown connected with a line to indicate an increase or reduction of F cell frequency. 66 (52%) female patients and 34 (34%) male patients increased the F cell frequency (F cell enrichment ratio, FER >1.1, red lines), 37 (29%) female patients and 37 (37%) male patients reduced the F cell frequency (FER

Citation: New research investigates differences in sickle cell disease between the sexes (2023, May 18) retrieved 24 April 2024 from <https://medicalxpress.com/news/2023-05-differences-sickle-cell-disease-sexes.html>

This document is subject to copyright. Apart from any fair dealing for the purpose of private study or research, no part may be reproduced without the written permission. The content is provided for information purposes only.