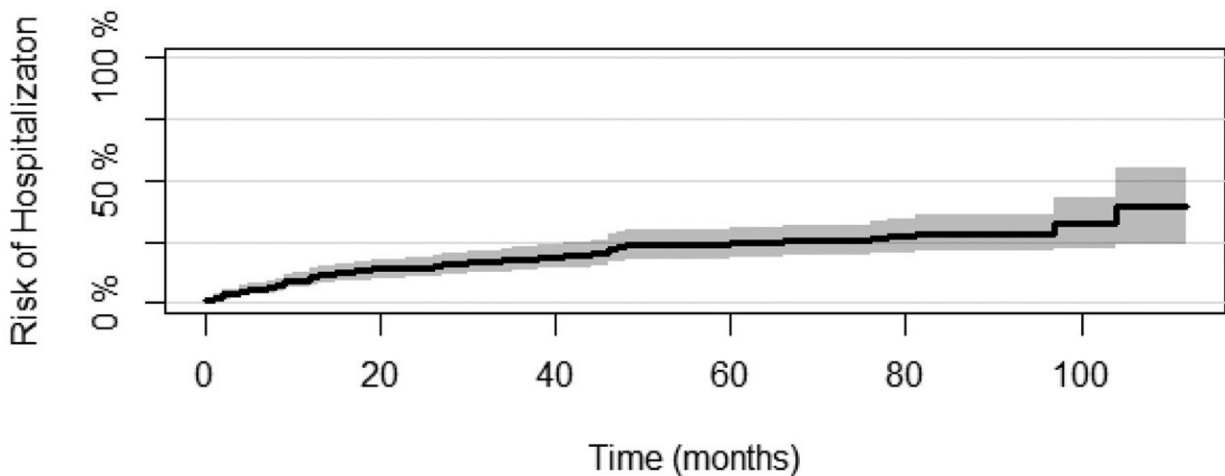


# Impaired verbal memory found to increase psychiatric patients' risk of hospitalization

May 4 2023



	0	19.8	38.5	83.2	112.0
<b>Time in months:</b>	<b>0</b>	<b>19.8</b>	<b>38.5</b>	<b>83.2</b>	<b>112.0</b>
<b>Numbers at risk</b>	<b>398</b>	<b>186</b>	<b>102</b>	<b>50</b>	<b>&lt;5</b>

Cumulative incidence plot illustrating the probability of getting hospitalized in individuals with bipolar disorder or major depressive disorder. The cumulative incidence plot illustrates the probability of getting hospitalized in individuals with bipolar disorder or major depressive disorder. The risk of hospitalization was estimated using Aalen-Johansen estimator. The y-axis represents the risk of hospitalization and the x-axis represents follow-up time in months. The cumulative incidence plot is estimated on a sample of 398 individuals with bipolar disorder or major depressive disorder. The 1-year, 5-year, and 9-year rates for the risk of hospitalizations were 11%, 25%, and 39% respectively. The number of individuals at risk at each time point is as follows: start of follow-up (n = 398), 19.8 months (n = 186), 38.5 months (n = 102), 83.2 months (n = 50), 112 months (n

Citation: Impaired verbal memory found to increase psychiatric patients' risk of hospitalization (2023, May 4) retrieved 26 April 2024 from <https://medicalxpress.com/news/2023-05-impaired-memory-psychiatric-patients-hospitalization.html>

This document is subject to copyright. Apart from any fair dealing for the purpose of private study or research, no part may be reproduced without the written permission. The content is provided for information purposes only.