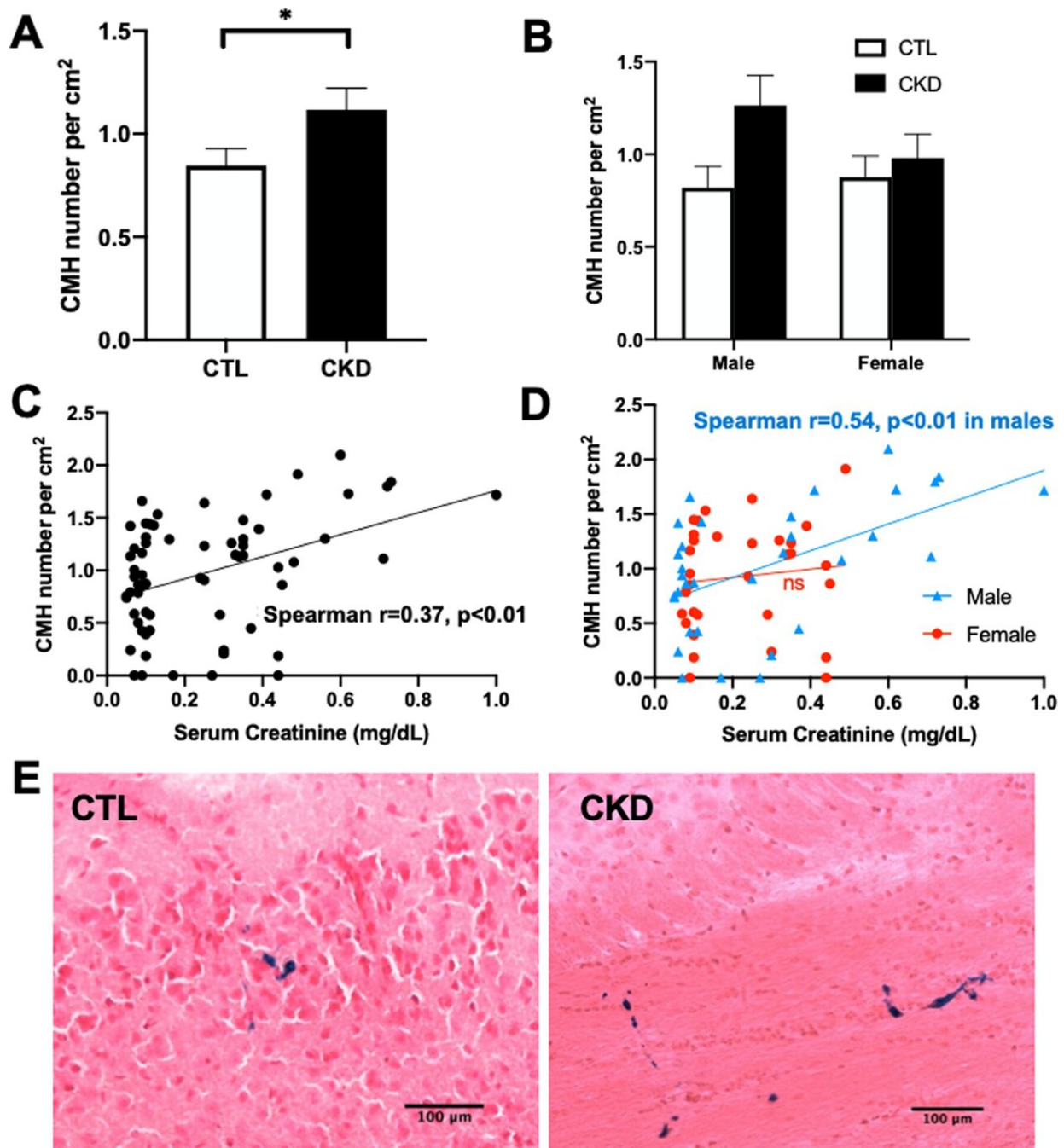


# **Study reveals first clear link between chronic kidney disease and stroke risk**

May 4 2023

---



CKD induction promoted cerebral microhemorrhages (CMH) formation. A, B Significantly higher CMH number, expressed as Prussian blue-positive CMH, in CKD mice compared with CTL mice. C, D Prussian blue positivity was positively correlated (Spearman correlation) with serum creatinine values. E Representative images of Prussian blue-positive lesions in the subcortex from CTL and CKD mice, indicating CMH burden. Scale bar = 100  $\mu\text{m}$ . Data shown

are mean  $\pm$  SEM. n = 15–17 per sex per group. \*p

Citation: Study reveals first clear link between chronic kidney disease and stroke risk (2023, May 4) retrieved 27 April 2024 from

<https://medicalxpress.com/news/2023-05-reveals-link-chronic-kidney-disease.html>

This document is subject to copyright. Apart from any fair dealing for the purpose of private study or research, no part may be reproduced without the written permission. The content is provided for information purposes only.