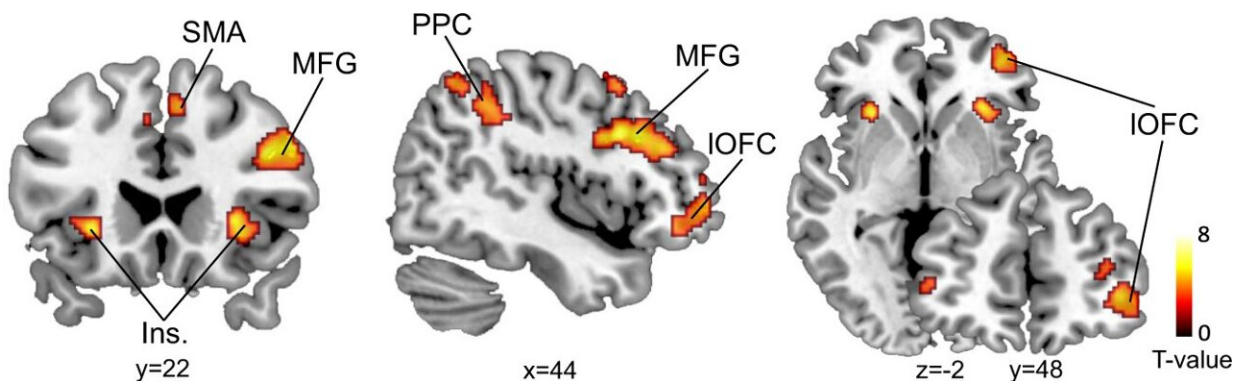


Tracing the evolutionary origin of cognitive flexibility

June 16 2023



fMRI activity related to the outcome PE. Whole-brain analysis of correlations with outcome PE revealed responses in bilateral middle frontal gyrus (MFG), supplementary motor cortex (SMA), bilateral insular cortex (Ins.), right posterior parietal cortex (PPC), and right lateral orbitofrontal cortex (IOFC). The activations (one-sided t-test, p

Citation: Tracing the evolutionary origin of cognitive flexibility (2023, June 16) retrieved 28 April 2024 from <https://medicalxpress.com/news/2023-06-evolutionary-cognitive-flexibility.html>

This document is subject to copyright. Apart from any fair dealing for the purpose of private study or research, no part may be reproduced without the written permission. The content is provided for information purposes only.