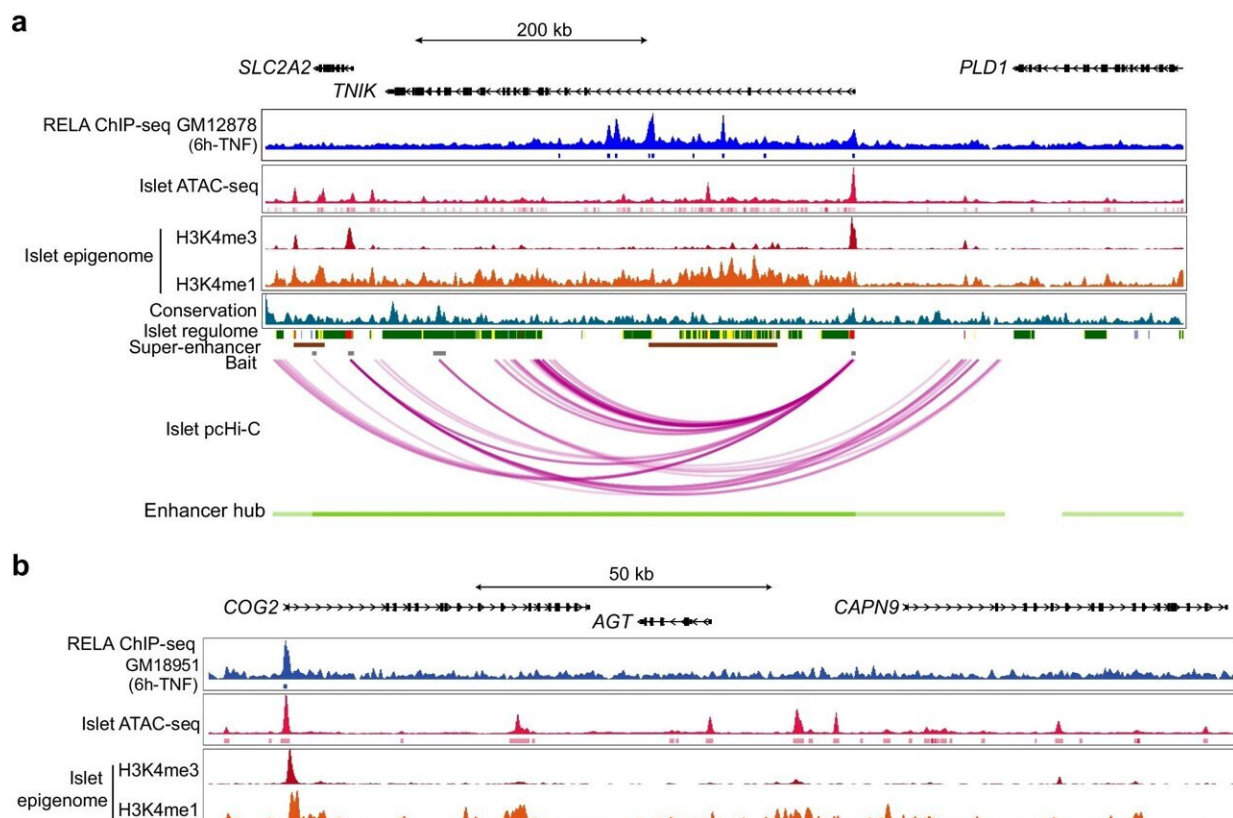


Gene provides clues for preventing common diabetes side effect of corticosteroid treatment

June 14 2023



SLC2A2 and *CAPN9* locuses form part of the islet enhancer hubs linked with p65 regulation. (a, b) p65 ChIP-seq enrichment, epigenomic annotations and high-confidence pcHi-C interactions from islet samples at the two candidate loci: (a) *SLC2A2* and (b) *CAPN9*. p65 ChIP-seq data were obtained from ENCODE. Islet pcHi-C interactions and super enhancers were obtained from Miguel-Escalada et al [22]. All browser views were generated using the WashU Epigenome Browser

[53]. Only the significant pcHi-C loops within the broadcast region are shown. ChIP, chromatin immunoprecipitation. (c, d) Real-time PCR analysis of (c) *Slc2a2* and (d) *Capn9* in islets isolated from p65fl/fl and β p65KO mice. Statistical analysis was performed using Student's *t* tests. Data are means \pm SEM. **p*

Citation: Gene provides clues for preventing common diabetes side effect of corticosteroid treatment (2023, June 14) retrieved 14 May 2024 from <https://medicalxpress.com/news/2023-06-gene-clues-common-diabetes-side.html>

This document is subject to copyright. Apart from any fair dealing for the purpose of private study or research, no part may be reproduced without the written permission. The content is provided for information purposes only.