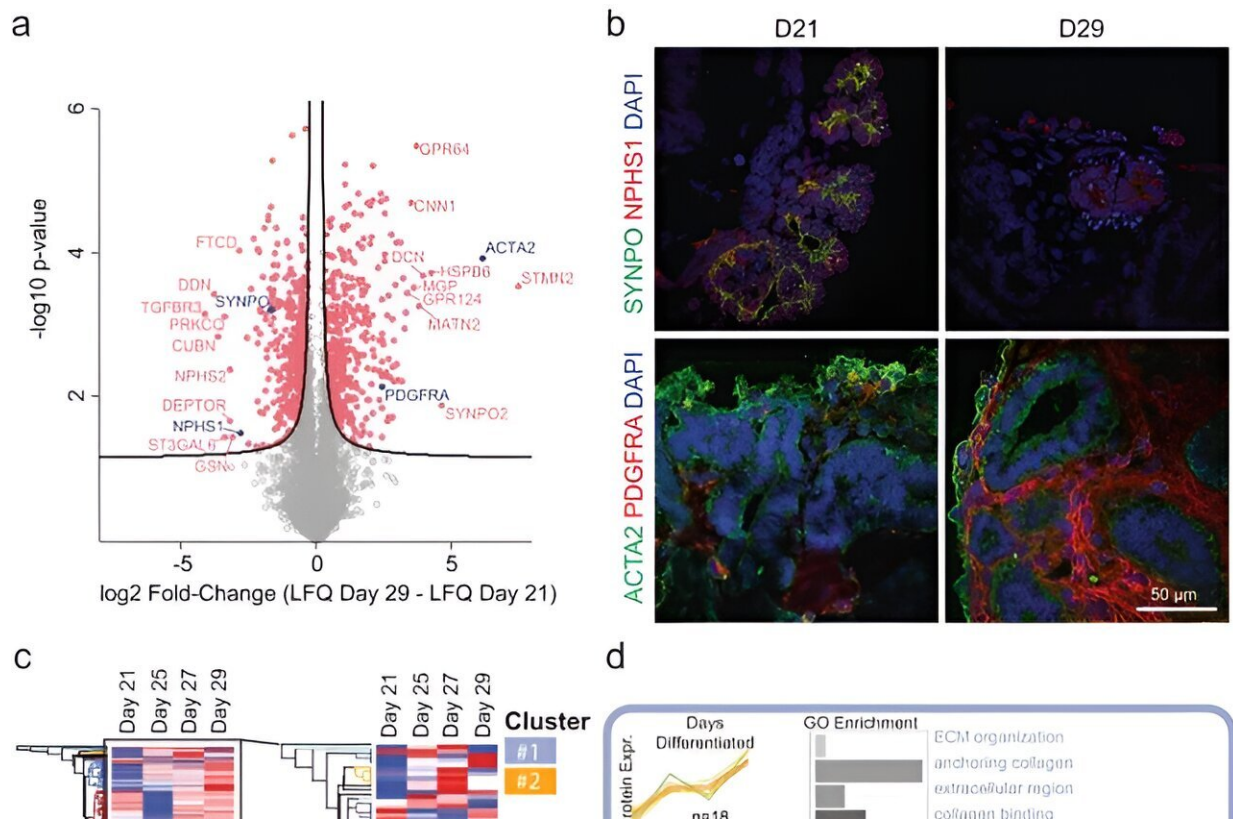


Modeling the potential of kidney disease with an integrated organoid omics map

September 4 2023, by Thamarasee Jeewandara



Proteome of kidney organoids evolves with duration in culture. a) Volcano plot of proteomic differential expression analysis (\log_2 fold change of label-free quantification intensity comparing D29 with D21). Proteins are represented by dots and the black line illustrates the significance cut-off (two sided t test, FDR 25 proteins) were distinguished and are indicated with colored rectangles. These five clusters are shown in (d). d) GO enrichment analysis of unbiased clustering (clusters >25 proteins) of proteins during organoid differentiation (D21–D29) (Fisher's exact test, FDR

Citation: Modeling the potential of kidney disease with an integrated organoid omics map (2023, September 4) retrieved 27 April 2024 from <https://medicalxpress.com/news/2023-09-potential-kidney-disease-organoid-omics.html>

This document is subject to copyright. Apart from any fair dealing for the purpose of private study or research, no part may be reproduced without the written permission. The content is provided for information purposes only.