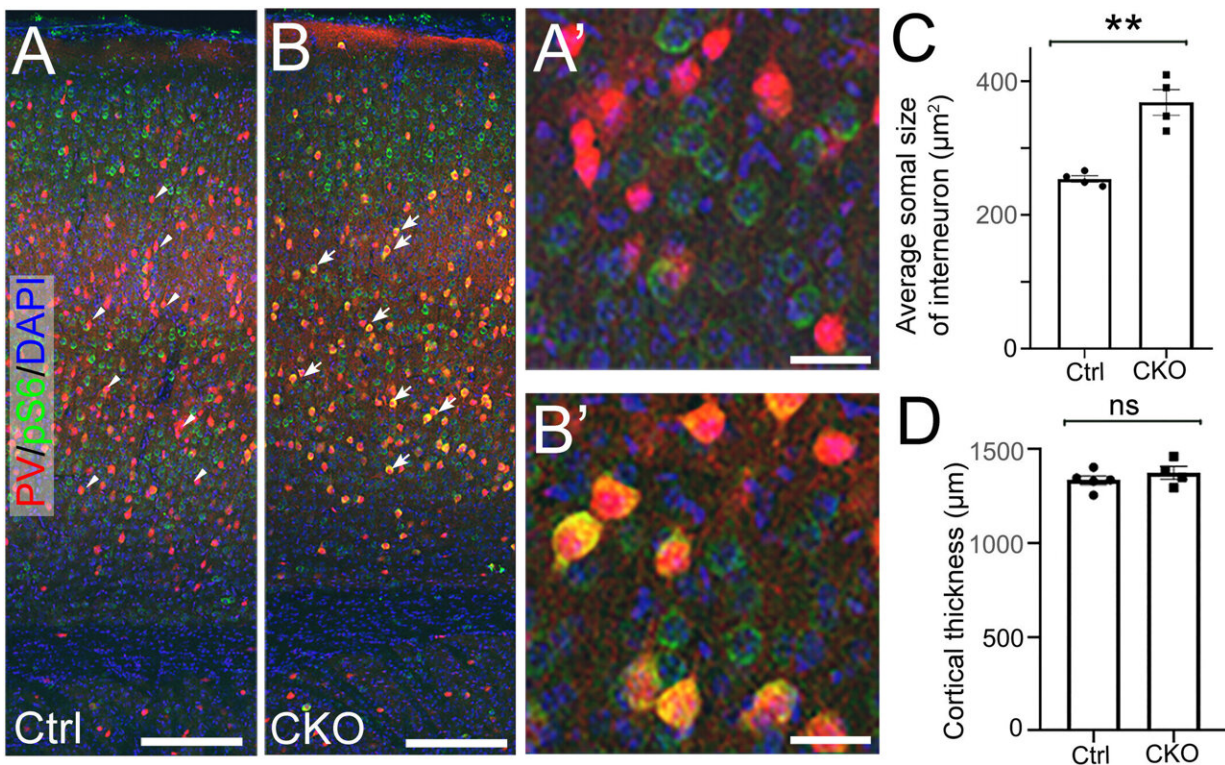


Scientists develop a new model for understanding sudden death in epilepsy

September 25 2023, by Emily Kagey



Depdc5 deletion in interneurons does not cause seizures. (A, B) Representative images of anti-pS6 (green) and anti-PV (red) co-immunohistochemistry staining on P21 brain coronal sections from control (A) and Nkx2.1-Cre; Depdc5 CKO mice. Compared to control PV+ interneurons (arrowheads in A), Depdc5 KO PV+ interneurons (arrows in B) show significantly increased immunoreactivity of pS6 (yellow). (A' and B') Are higher magnification images. (C) Quantification shows that cortical PV+ interneurons in Nkx2.1-Cre; Depdc5^{F/F} CKO mice have an enlarged soma size (n = 4 in control and CKO groups, student t test, p

Citation: Scientists develop a new model for understanding sudden death in epilepsy (2023, September 25) retrieved 27 April 2024 from <https://medicalxpress.com/news/2023-09-scientists-sudden-death-epilepsy.html>

This document is subject to copyright. Apart from any fair dealing for the purpose of private study or research, no part may be reproduced without the written permission. The content is provided for information purposes only.