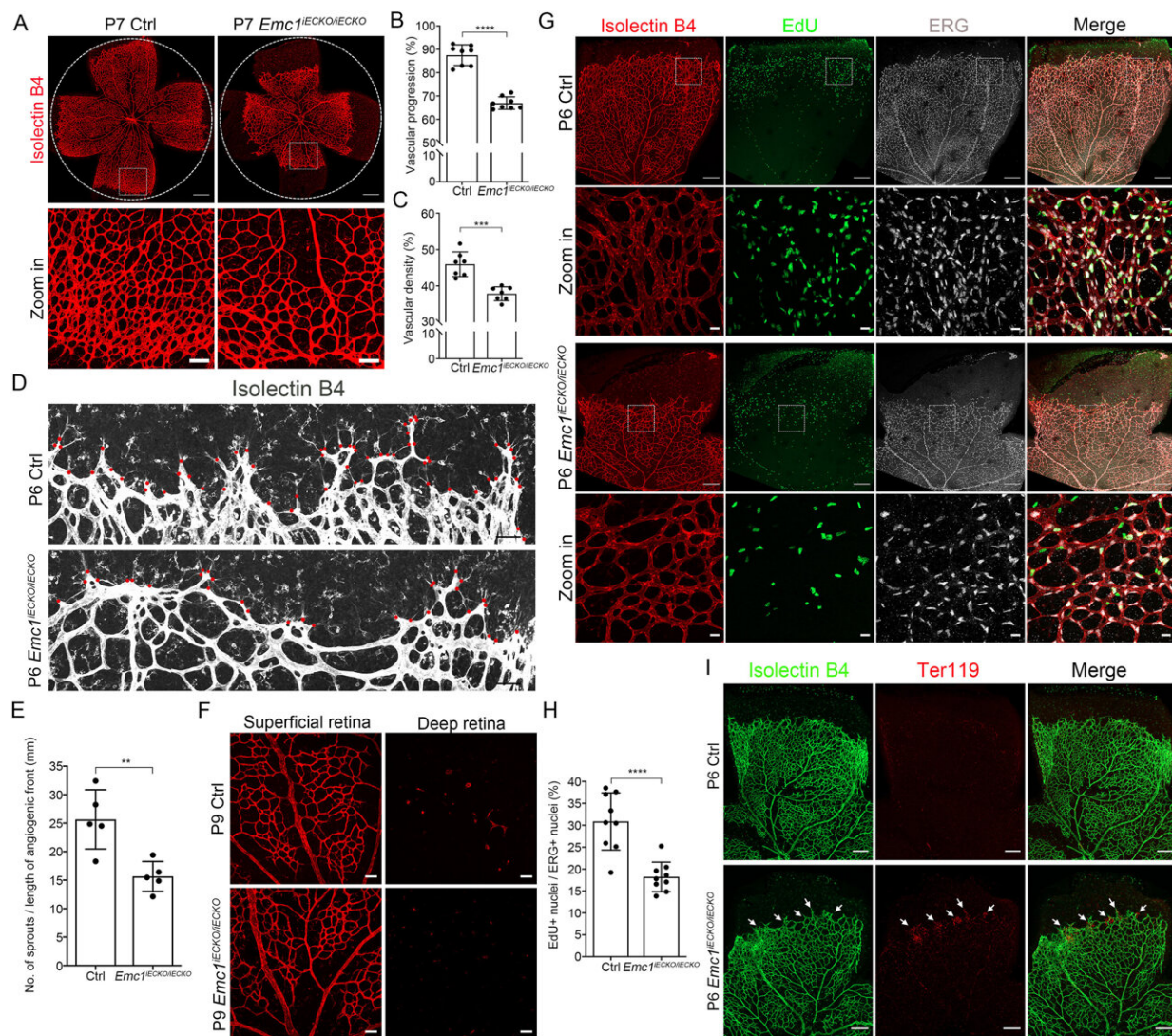


Defective EMC1 protein may contribute to a severe ocular disorder, familial exudative vitreoretinopathy

October 9 2023



Loss of *Emc1* in mouse endothelial cells results in retinal vascular defects. (A)

Representative overview (top panels) and high-magnification images (bottom panels) of P7 control (Ctrl) and $Emc1^{iECKO/iECKO}$ mouse retinae stained with Isolectin B4 (IB4). The circles indicate vessel outgrowth of Ctrl retinae. Scale bars, 500 μm and 100 μm . (B, C) Quantification of vascular progression (B) and vascular density (C) of P7 control (Ctrl) and $Emc1^{iECKO/iECKO}$ mouse retinae. Error bars, standard deviations (SDs). Student's t-test ($n \geq 7$), ***P

Citation: Defective EMC1 protein may contribute to a severe ocular disorder, familial exudative vitreoretinopathy (2023, October 9) retrieved 2 May 2024 from <https://medicalxpress.com/news/2023-10-defective-emc1-protein-contribute-severe.html>

This document is subject to copyright. Apart from any fair dealing for the purpose of private study or research, no part may be reproduced without the written permission. The content is provided for information purposes only.