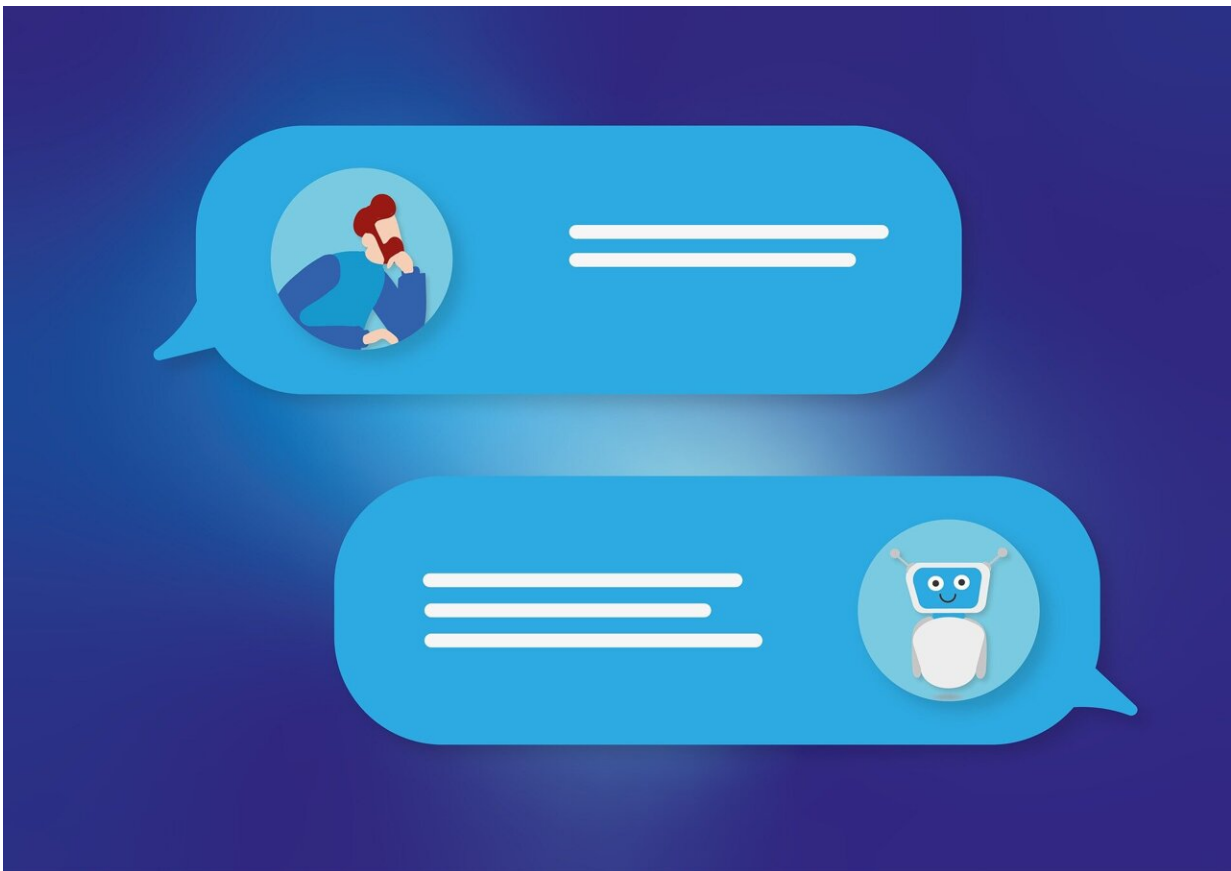


How accurate is ChatGPT at rating common allergy myths? Pretty accurate, says research

November 9 2023



Credit: Pixabay/CC0 Public Domain

Artificial intelligence language models such as ChatGPT are increasingly being used in many different professions, and medicine is not an

exception.

In a new study being presented at the American College of Allergy, Asthma and Immunology ([ACAAI](#)) Annual Scientific Meeting in Anaheim, Calif., ChatGPT was asked to rate 10 common allergy [myths](#), and it judged their accuracy correctly 91% of the time.

"We searched the PubMed and Google Scholar databases to identify all articles on common allergy myths between 2000-2023," says Ricardo Estrada-Mendizabal, MD, ACAAI member and lead author of the study.

"Our goal was to assess the [accuracy](#) of ChatGPT in correctly identifying common allergy myths. We know allergy and asthma patients are constantly exposed to misinformation on the internet. We thought that the surge of public language models could represent a bigger threat to [misinformation](#) spread, especially because ChatGPT is unable to provide references."

Ten myths were selected and entered in ChatGPT 4.0 with the prompt "true or false." ChatGPT answers were graded by 24 allergists on a Likert scale of 1–4 (1=inaccurate [100% not true], 2=somewhat inaccurate [>30% not true], 3= somewhat accurate [

Citation: How accurate is ChatGPT at rating common allergy myths? Pretty accurate, says research (2023, November 9) retrieved 10 May 2024 from <https://medicalxpress.com/news/2023-11-accurate-chatgpt-common-allergy-myths.html>

This document is subject to copyright. Apart from any fair dealing for the purpose of private study or research, no part may be reproduced without the written permission. The content is provided for information purposes only.