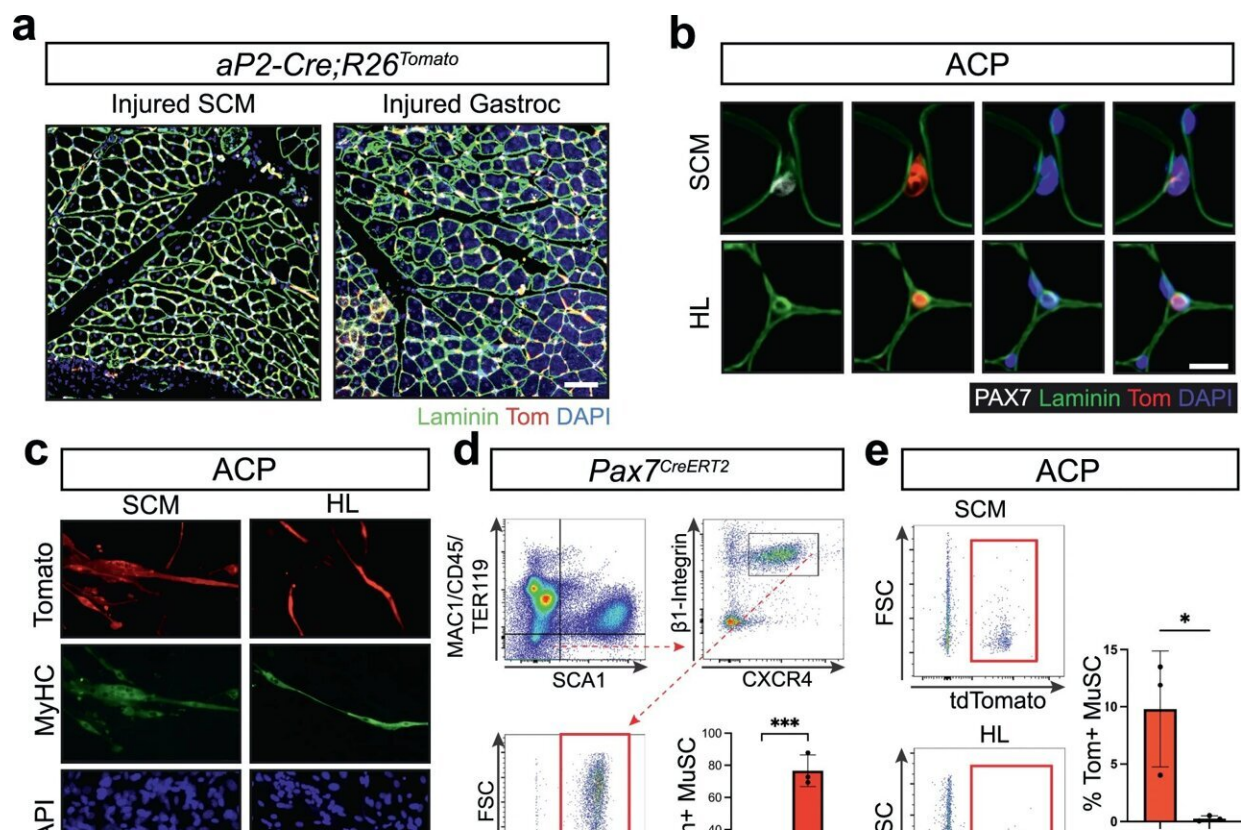


Fusion oncoprotein forces cell fates toward rhabdomyosarcoma

November 15 2023



P3F reprograms endothelial cells to functional muscle stem cells. **a** Representative immunofluorescence (IF) from *aP2-Cre;R26-tdTom* sternocleidomastoid (SCM) and gastrocnemius (gastroc) following cardiotoxin (CTX) injury. Laminin (green), tdTomato (red), DAPI nuclear stain (blue) ($n = 3$). Scale bar = 100 μ m. **b** Representative IF of SCM and quadriceps femoralis hindlimb (HL). PAX7 (white), laminin (green), tdTomato (red), DAPI (blue). This experiment was repeated 3 times with similar results. Scale bar = 10 μ m. **c** Representative IF of myogenic differentiation from ACP SCM and HL. Myosin

heavy chain (MyHC, green), tdTomato (red), DAPI (blue)($n = 3$, 100+ nuclei counted/replicate) Scale bar = 50 μm . Flow cytometry analysis of muscle stem cells by (MAC1/CD45/TER119) and SCA1 negative, $\beta 1$ -Integrin and CXCR4-positive, and Tom⁺ cells from **d** *Pax7-CreERT2;R26-tdTom* muscle - ($n = 3$ biological replicates) ($P = 0.0002$) and **e** Flow cytometry from ACP SCM and HL ($n = 3$ biological replicates) ($P = 0.0314$). **f** Representative IF from CTX injured *Pax7-CreERT2;R26-tdTom* gastroc ($n = 2$), and ACP SCM ($n = 2$) and gastroc ($n = 2$). Laminin (green), tdTomato (red), DAPI (blue). Scale bar = 100 μm . P values determined by Student's t -test (unpaired, two-tailed); * P

Citation: Fusion oncoprotein forces cell fates toward rhabdomyosarcoma (2023, November 15) retrieved 29 April 2024 from <https://medicalxpress.com/news/2023-11-fusion-oncoprotein-cell-fates-rhabdomyosarcoma.html>

This document is subject to copyright. Apart from any fair dealing for the purpose of private study or research, no part may be reproduced without the written permission. The content is provided for information purposes only.