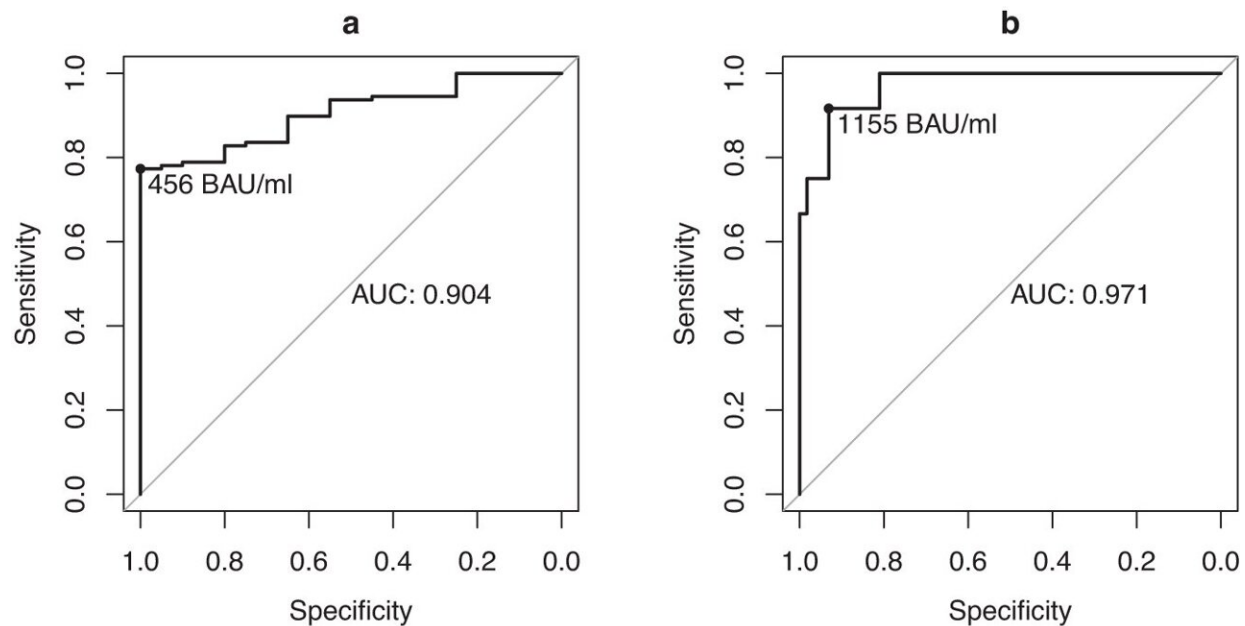


# New research identifies a threshold of immunity for COVID-19

November 6 2023



Receiver operating characteristic curves. **a** Receiver operating characteristic (ROC) curve demonstrating the performance of RBD in discriminating a wild type (WT-B) NT50

Citation: New research identifies a threshold of immunity for COVID-19 (2023, November 6) retrieved 10 May 2024 from <https://medicalxpress.com/news/2023-11-threshold-immunity-covid-.html>

This document is subject to copyright. Apart from any fair dealing for the purpose of private study or research, no part may be reproduced without the written permission. The content is provided for information purposes only.