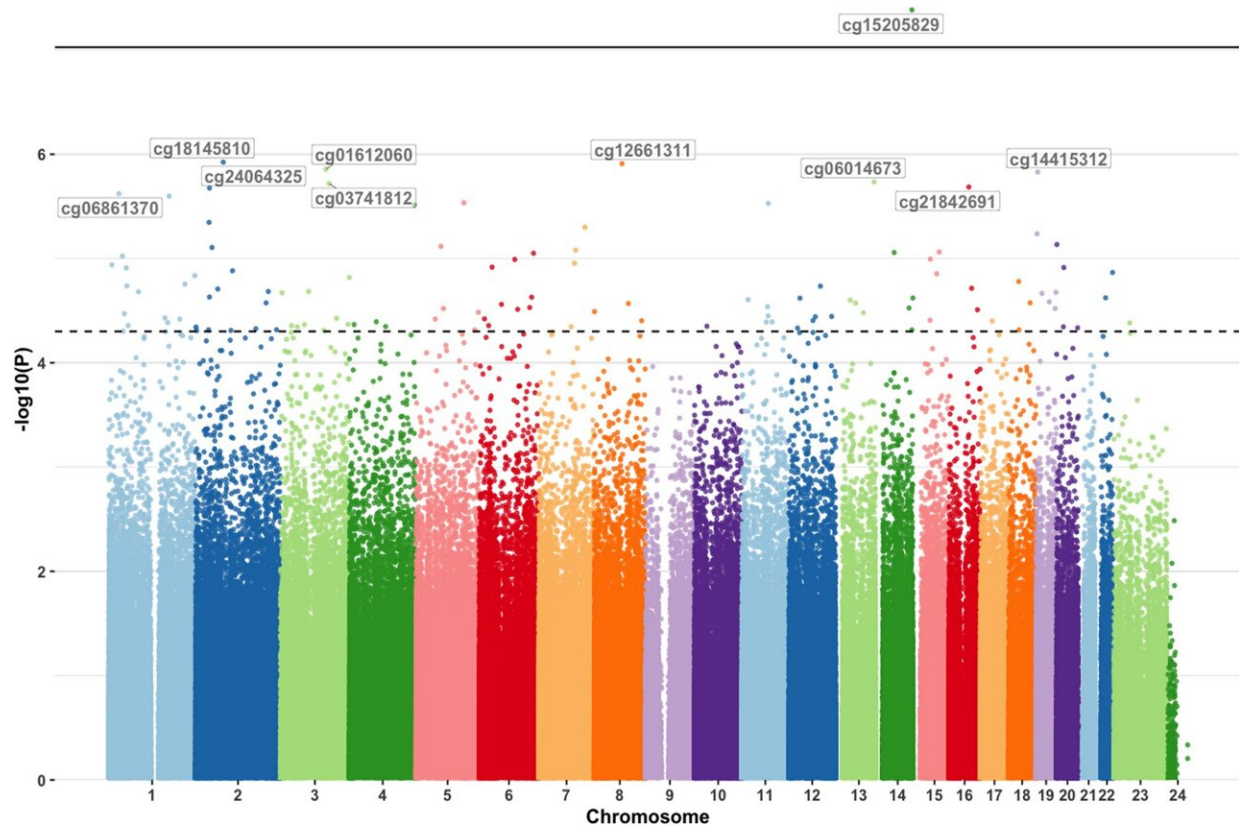


Chronic migraine research finds genetic mechanism to lower migraine frequency

December 15 2023, by Niki Widdowson



Manhattan plot from the epigenome-wide association study of baseline DNA methylation predicting treatment response. Manhattan plot showing the $-\log_{10}(p)$ value) for each CpG site associated with baseline DNA methylation in responders versus non-responders at T1. The threshold for epigenome-wide significant association (p

Citation: Chronic migraine research finds genetic mechanism to lower migraine frequency

(2023, December 15) retrieved 28 April 2024 from

<https://medicalxpress.com/news/2023-12-chronic-migraine-genetic-mechanism-frequency.html>

This document is subject to copyright. Apart from any fair dealing for the purpose of private study or research, no part may be reproduced without the written permission. The content is provided for information purposes only.